

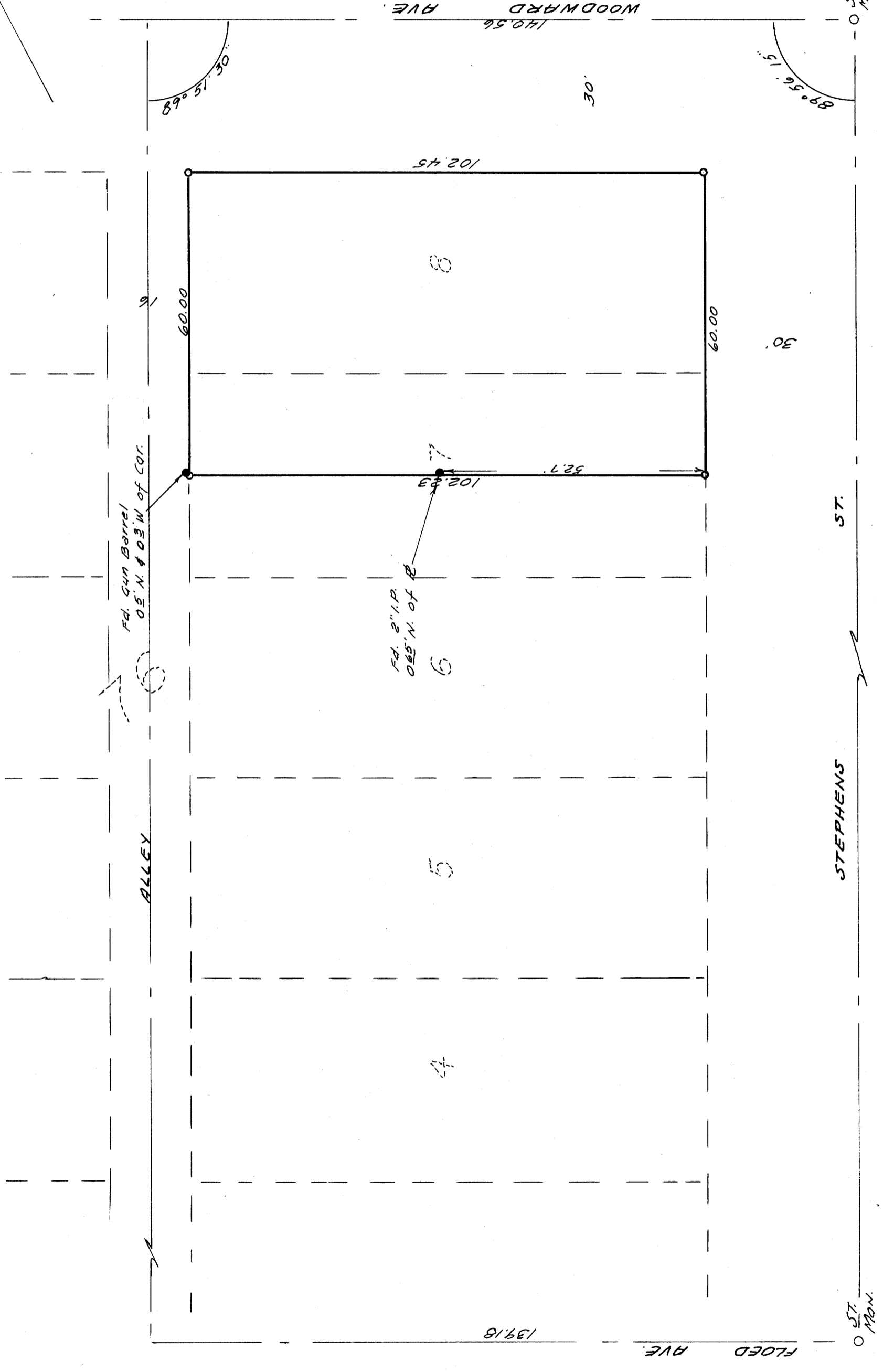
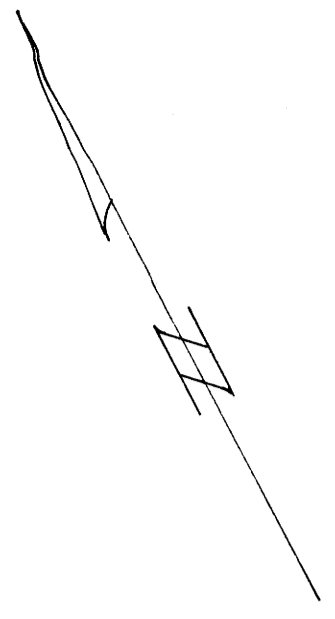
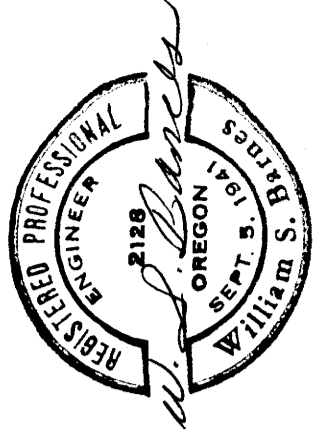
COUNTY SURVEYORS FILE DATA
DO NOT REMOVE FROM OFFICE

SURVEY TO ESTABLISH PROPERTY CORNERS
IN LOTS 7 & 8, BLOCK 76, FOURTH SOUTHERN ADD'N,
TO CITY OF ROSEBURG, ORE.

o Denotes 3/4" iron rods set.
Reference - M 14-62

APRIL 1968
SCALE 1" = 20'

SURVEYED FOR - WM. C. PRITCHETT
SURVEYED BY - W. S. BARNES



FILED
RECEIVED
APR 29 1968
COUNTY SURVEYOR
DOUGLAS COUNTY, ORE.