

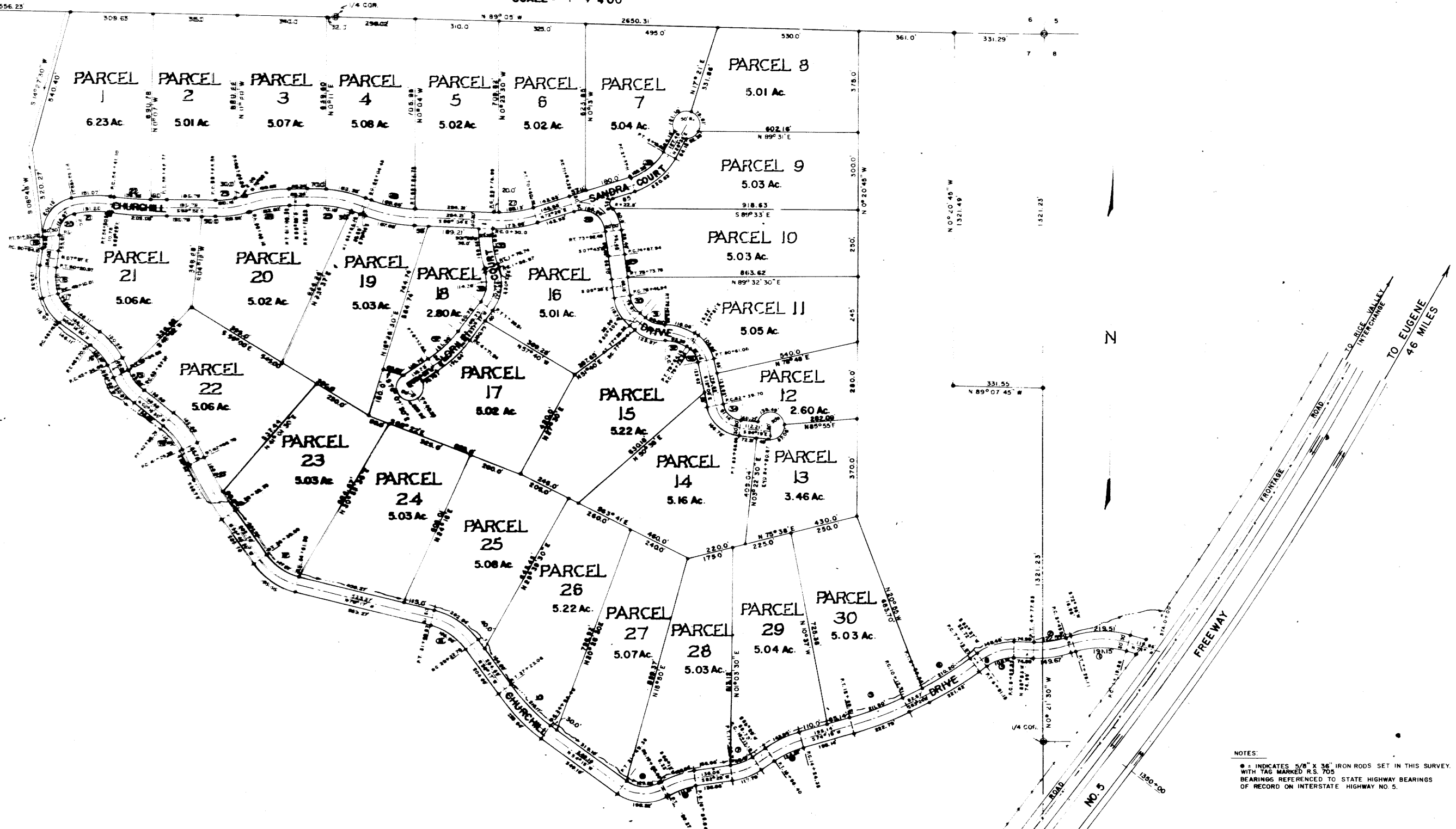
# RICE HILL ESTATES

PART OF A 1600 ACRE PLANNED DEVELOPMENT

OWNERS AND DEVELOPERS:  
D.M. WEBB AND JAMES R. De BAUN

SITUATE IN SECTION 7, TOWNSHIP 24 SOUTH, RANGE 5 WEST, WILLAMETTE MERIDIAN, DOUGLAS COUNTY, OREGON

DATE: MARCH 2, 1968  
SCALE = 1" = 400'



NOTES:  
• INDICATES 3/4" X 3/4" IRON RODS SET IN THIS SURVEY WITH TAG MARKED R.S. 705  
BEARINGS REFERENCED TO STATE HIGHWAY BEARINGS OF RECORD ON INTERSTATE HIGHWAY NO. 5

CURVE DATA					
① Δ = 33°24'	② Δ = 18°31'	③ Δ = 38°30'	④ Δ = 10°47'	⑤ Δ = 10°51'	⑥ Δ = 18°46'
D = 18'	D = 14'	D = 30'	D = 5'	D = 5'	D = 14'
R = 358.10'	R = 409.26'	R = 190.99'	R = 1145.92'	R = 1145.92'	R = 409.26'
T = 107.43'	T = 66.71'	T = 66.70'	T = 108.15'	T = 108.83'	T = 67.63'
L = 204.79'	L = 132.26'	L = 128.33'	L = 218.87'	L = 217.0'	L = 134.08'
⑦ Δ = 26°56'	⑧ Δ = 22°15'	⑨ Δ = 48°33'	⑩ Δ = 17°58'	⑪ Δ = 40°00'	⑫ Δ = 40°30'30"
D = 28'	D = 18'	D = 40'	D = 8'	D = 22'	D = 24'
R = 220.37'	R = 318.3'	R = 143.24'	R = 716.20'	R = 340.44'	R = 236.73'
T = 82.77'	T = 82.80'	T = 92.22'	T = 113.22'	T = 94.79'	T = 88.09'
L = 103.98'	L = 123.43'	L = 163.88'	L = 224.58'	L = 181.82'	L = 168.75'
⑬ Δ = 08°21'30"	⑭ Δ = 25°50'30"	⑮ Δ = 25°47'30"	⑯ Δ = 27°46'30"	⑰ Δ = 37°23'30"	⑱ Δ = 24°28'
D = 4'	D = 20'	D = 24'	D = 24'	D = 40'	D = 22.15'
R = 1432.40'	R = 286.43'	R = 236.73'	R = 236.73'	R = 1432.4'	R = 258.88'
T = 117.24'	T = 85.72'	T = 54.66'	T = 59.03'	T = 48.47'	T = 56.13'
L = 254.0'	L = 129.20'	L = 107.46'	L = 115.75'	L = 93.48'	L = 110.06'
⑲ Δ = 14°25'	⑳ Δ = 84°16'	㉑ Δ = 19°03'	㉒ Δ = 17°56'	㉓ Δ = 16°07'	㉔ Δ = 10°
D = 30'	D = 53.44'	D = 13.5'	D = 3'	D = 15'	D = 10'
R = 190.99'	R = 104.74'	R = 424.52'	R = 190.88'	R = 381.97'	R = 572.96'
T = 24.96'	T = 94.99'	T = 71.23'	T = 100.94'	T = 60.27'	T = 81.12'
L = 46.03'	L = 156.98'	L = 141.11'	L = 201.67'	L = 119.53'	L = 161.17'
㉕ Δ = 21°07'	㉖ Δ = 17°50'	㉗ Δ = 19°36'	㉘ Δ = 99°57'	㉙ Δ = 1°43'	㉚ Δ = 40°54'
D = 10'	D = 10'	D = 12'	D = 48'	D = 3'	D = 42'
R = 432.24'	R = 173.24'	R = 102.31'	R = 102.31'	R = 374.30'	R = 143.24'
T = 83.87'	T = 81.78'	T = 43.14'	T = 74.83'	T = 74.36'	T = 79.10'
L = 102.0'	L = 100.84'	L = 81.70'	L = 129.96'	L = 146.74'	L = 144.54'
㉛ Δ = 19°22'	㉜ Δ = 43°40'	㉝ Δ = 43°40'	㉞ Δ = 56°	㉟ Δ = 22°28'	㊱ Δ = 37°49'
D = 12'	D = 24'	D = 24'	D = 56'	D = 15.31'	D = 40'
R = 472.47'	R = 338.75'	R = 338.75'	R = 115.37'	R = 286.470'	R = 136.42'
T = 81.47'	T = 95.85'	T = 95.85'	T = 42.47'	T = 42.94'	T = 50.87'
L = 161.39'	L = 182.28'	L = 182.28'	L = 85.84'	L = 85.84'	L = 97.58'

REGISTERED  
OREGON  
LAND SURVEYOR  
Gerald D. Riley  
JULY 8, 1959  
GERALD D. RILEY  
705

SURVEYED BY: GERALD D. RILEY, R.S. 705,  
1890 REGINA WAY,  
GRANTS PASS, OREGON.

MAP FILE M 35 7 67

MAP FILE M 35 7 67