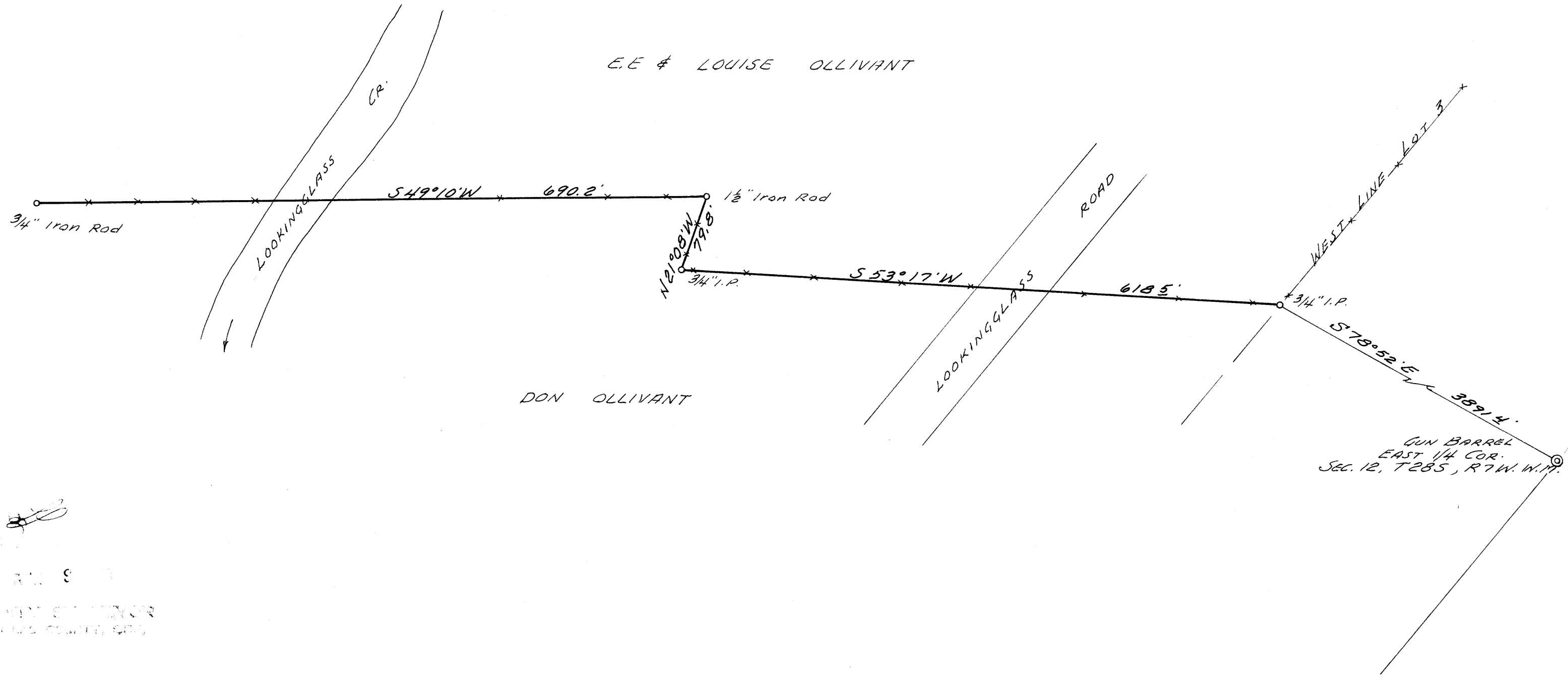
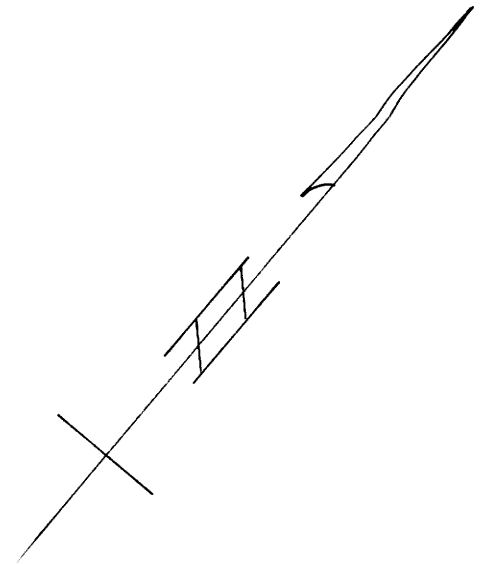


FENCE LINE SURVEY FOR PROPERTY LINE SETTLEMENT.
 IN SEC. 12, T28S, R 7 W. W.M., DOUGLAS COUNTY, ORE.

PREPARED FOR - DON OLLIVANT
 ENGINEER - W. S. BARNES

APRIL 1968
 SCALE 1" = 100'

COUNTY SURVEYORS FILE DATA
 DO NOT REMOVE FROM OFFICE



E.E. & LOUISE OLLIVANT

DON OLLIVANT

W. S. BARNES
 REGISTERED PROFESSIONAL ENGINEER
 OREGON

MAP FILE M 35 7-63

MAP FILE M 35 7-63