

COUNTY SURVEYORS FILE DATA
DO NOT REMOVE FROM OFFICE

FILED
RECEIVED

FEB 26 1968

COUNTY SURVEYOR
DOUGLAS COUNTY, ORE.

SURVEY FOR DEED DESCRIPTION IN SEC. 13 T27S R7W W.M. SURVEYED FOR CHRIS F. WULFF BY DON E. GARRETT FEB. 1968

SCALE 1"=100'

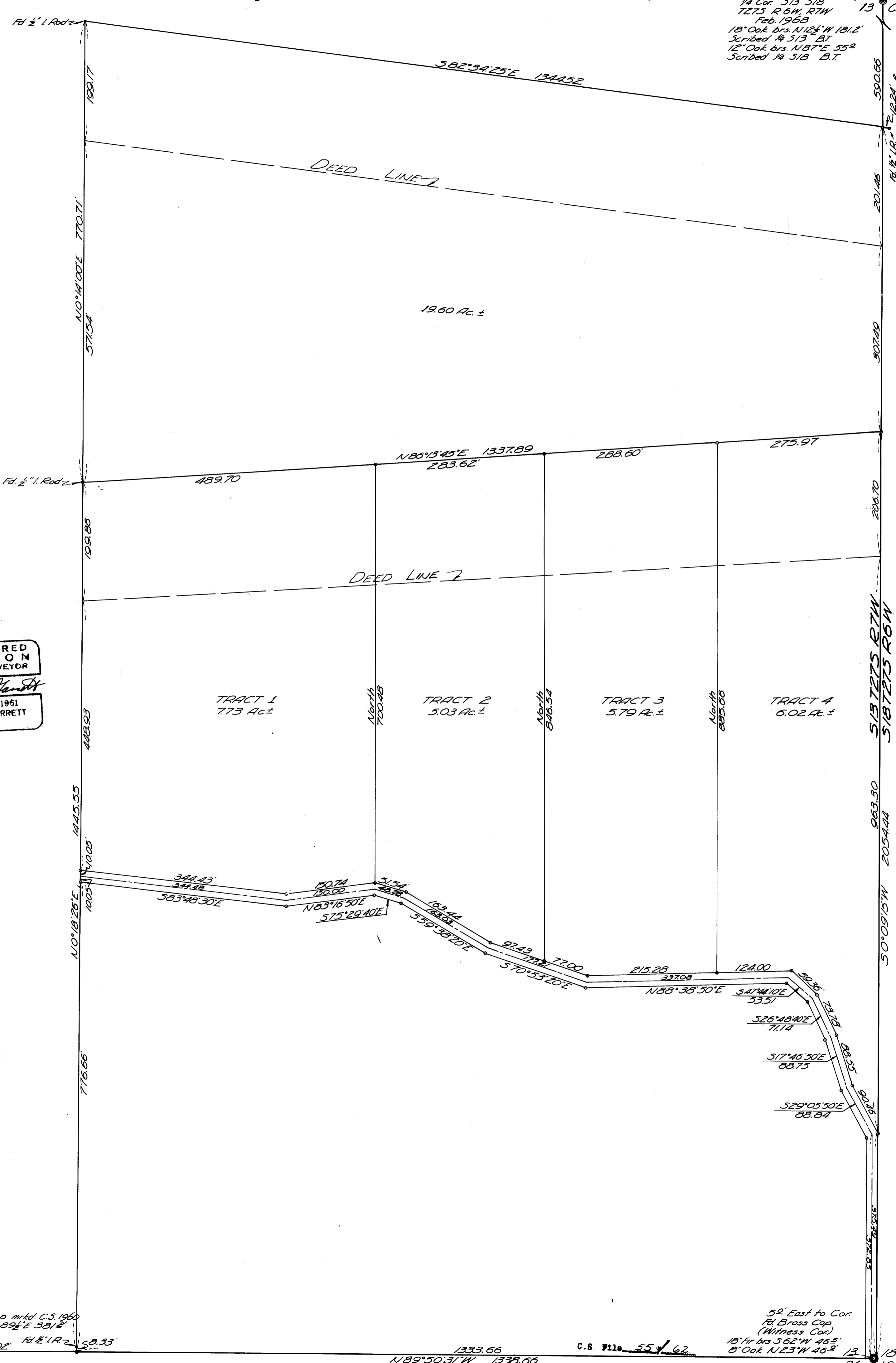
° Denotes set 3/4" I. Rod

• Denotes Fd. 1/2" I. Rod C.S. File #5/232

Bearings Based on a Solar Observation taken Feb. 3, 1968

Fd. Brass Cap
24" Oak brs. N35°W 12
29.2'
18" Oak brs. N62°E
10.3'

Set Brass Cap
Stamped L.S. 544
1/4 Cor. 513 518
T27S R6W, R7W
Feb. 1968
18" Oak brs. N12 1/2°W 181.2'
Scribed 1/4 513 B.T.
12" Oak brs. N187°E 55°
Scribed 1/4 518 B.T.



REGISTERED
OREGON
LAND SURVEYOR
Don E. Garrett
JULY 14, 1961
DON E. GARRETT
544

Fd. Brass Cap mtd. C.S. 1960
24" Oak Brs. S89 1/2°E 381.8'
1/4 13 1311.02' Fd. 1/2" I. Rod
24 Cor.

C.S. File 55-62
Map File M.35-44

52' East to Cor.
Fd. Brass Cap
(Witness Cor.)
18" Fir brs S62°W 46.3'
8" Oak N23°W 46.3'