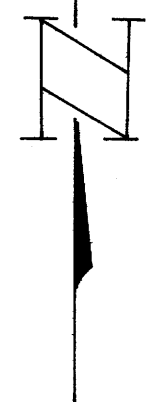
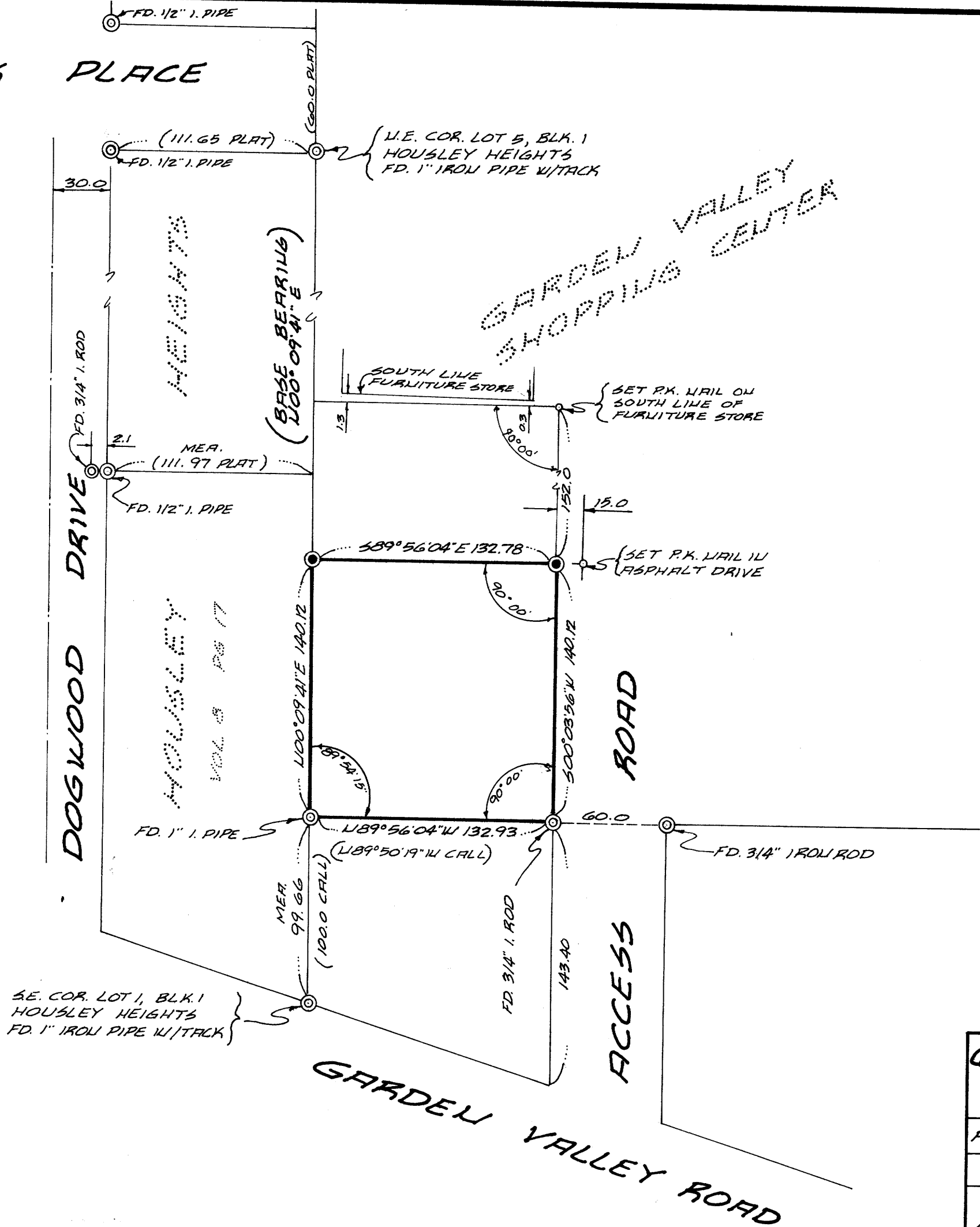


C 563/44  
 MAP FILE 135-1-42

BLACK PLACE



LEGEND

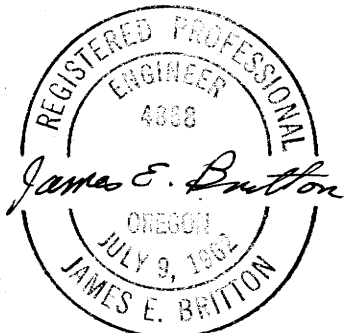
- SET 5/8" IRON ROD
- FOUND IRON PIPE OR ROD
- SET P.K. NAIL

COUNTY SURVEYORS FILE DATA  
 DO NOT REMOVE FROM OFFICE

QUILIER & BRITTON-CONSULTING ENGINEERS  
 751 WEST 12TH AVENUE  
 EUGENE, OREGON

PROJECT	PROPERTY SURVEY
FOR	STANDARD OIL CO.
LOCATION	BEING IN SEC. 13 T27 S. 9. G. W. W. M. IN ROSEBURG DOUGLAS COUNTY, OREGON

DRAWN BY: L. BORUP  
 DATE: JAN. 8, 1968  
 SCALE 1" = 60



FILED  
 RECEIVED  
 FEB 2 11 1968  
 COUNTY SURVEYOR  
 DOUGLAS COUNTY, ORE.

MAP FILE 135-1-42  
 C 563/44