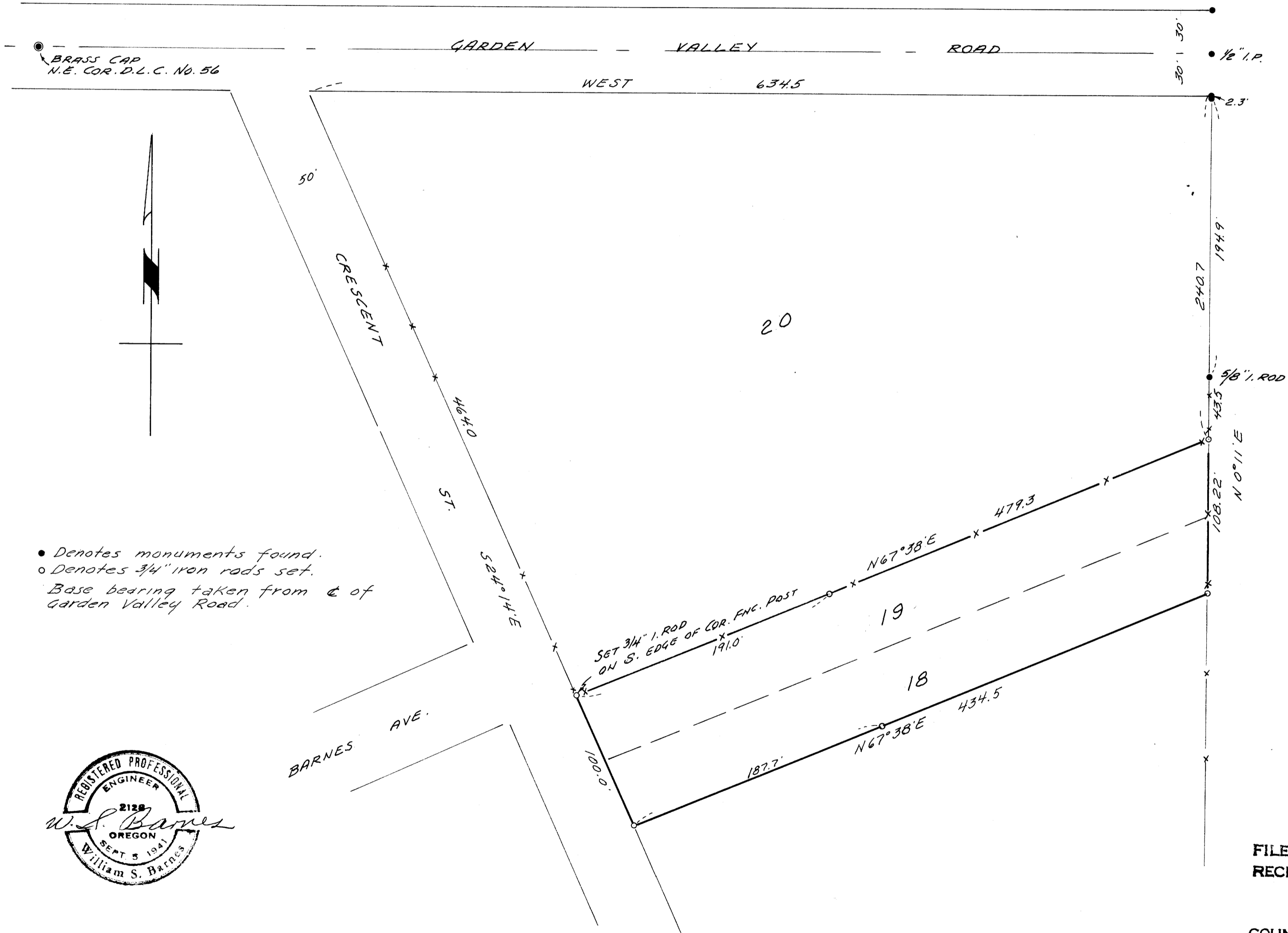


COUNTY SURVEYORS FILE DATA
DO NOT REMOVE FROM OFFICE

SURVEY OF
LOTS 18 & 19, BLOCK 18 OF JONES ADD.
ROSEBURG, ORE.

SURVEYED FOR - EVERETT OLIVER
SURVEYED BY - W. S. BARNES

JAN. 1968
SCALE 1" = 60'



• Denotes monuments found.
○ Denotes 3/4" iron rods set.
Base bearing taken from \odot of
Garden Valley Road.



FILED
RECEIVED

FEB 27 1968

COUNTY SURVEYOR
DOUGLAS COUNTY, ORE.

MAP FILE M. 35-7-41

MAP FILE M. 35-7-41