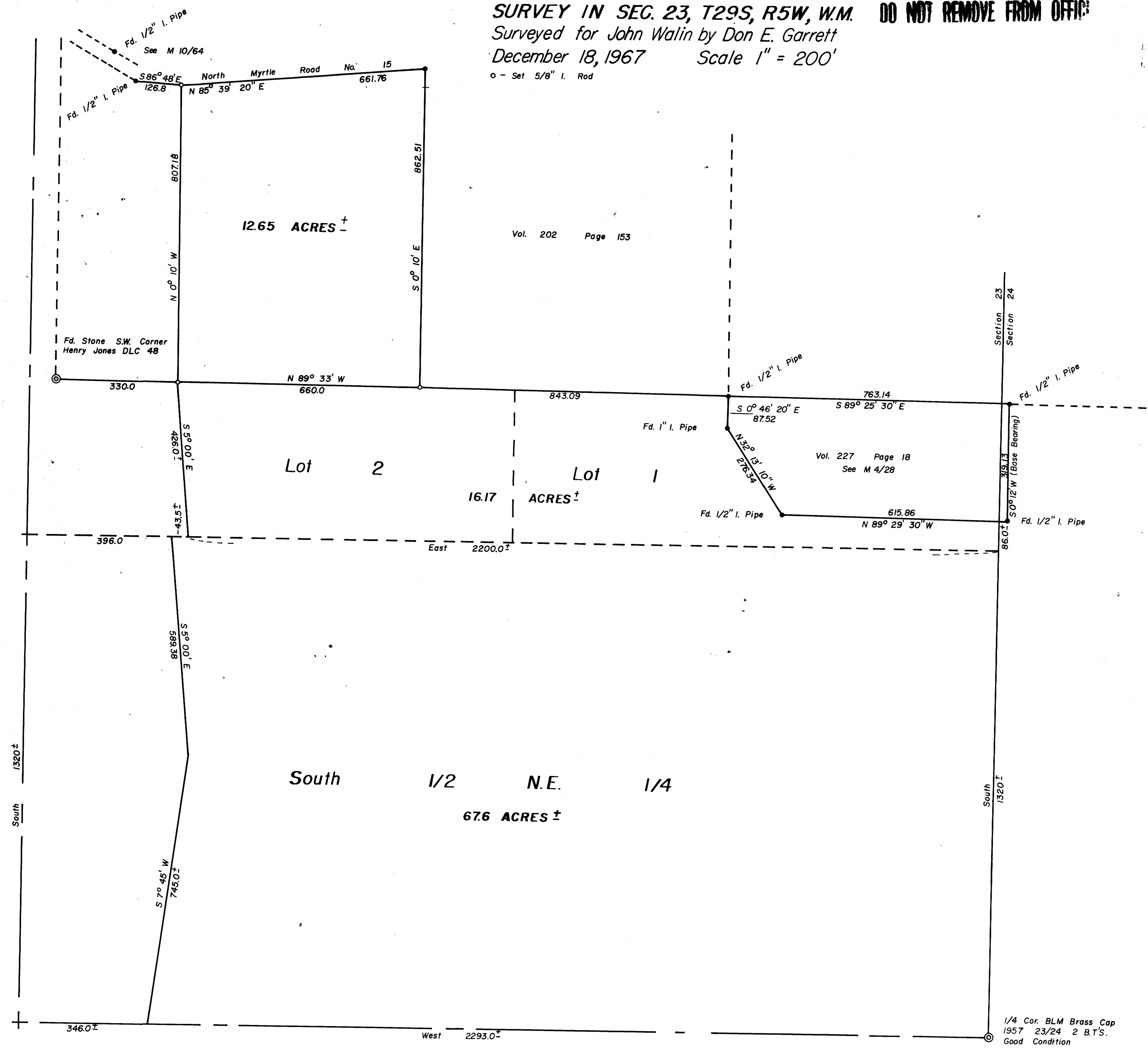


COUNTY SURVEYORS FILE DATA
DO NOT REMOVE FROM OFFICE

SURVEY IN SEC. 23, T29S, R5W, W.M.
Surveyed for John Walin by Don E. Garrett
December 18, 1967 Scale 1" = 200'
o - Set 5/8" I. Rod

JAN 29, 1968

REGISTERED
OREGON
LAND SURVEYOR
Don E. Garrett
JULY 14, 1961
DON E. GARRETT
544



DIAZO COPY MADE
APRIL 1999, USING A
"REPROTECHNOLOGY 5000"
BLUEPRINT MACHINE

M 35 - 33

M 35 - 33