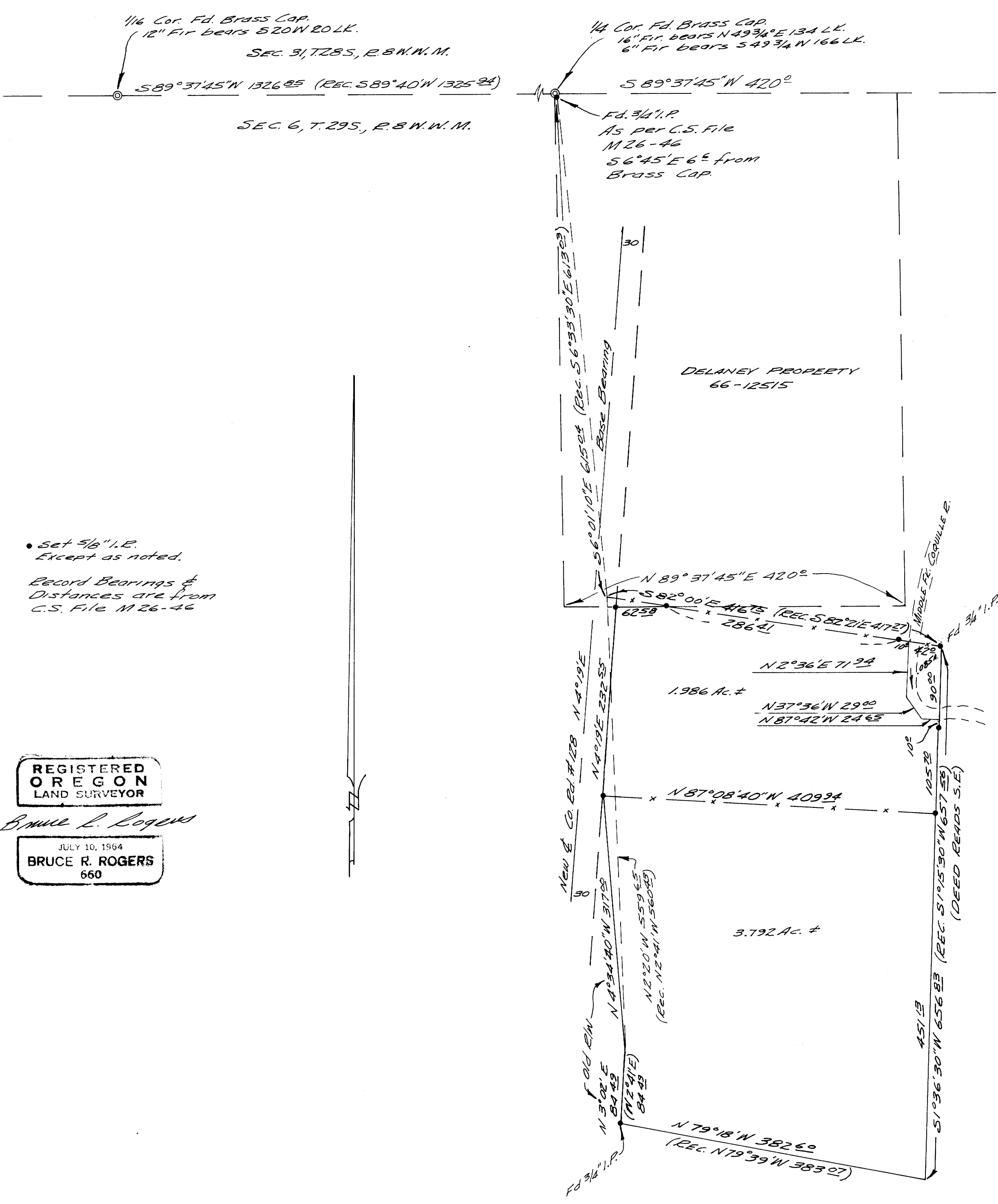


DO NOT REMOVE FROM OFFICE

SURVEY FOR DEED DESCRIPTIONS  
IN THE N.W. 1/4, N.E. 1/4, SEC. 6  
T. 29S, R. 8W, N.M.  
SURVEYED FOR LES BLACK REALTY  
BY BRUCE R. ROGERS  
JAN. 23, 1968  
1" = 100'



Set 5/8" I.P. Except as noted.  
Record Bearings & Distances are from C.S. File M 26-46

REGISTERED OREGON LAND SURVEYOR  
Bruce R. Rogers  
JULY 10, 1964  
BRUCE R. ROGERS  
660

Handwritten notes and signatures at the bottom left corner.