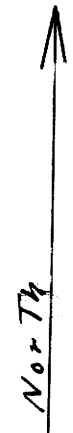
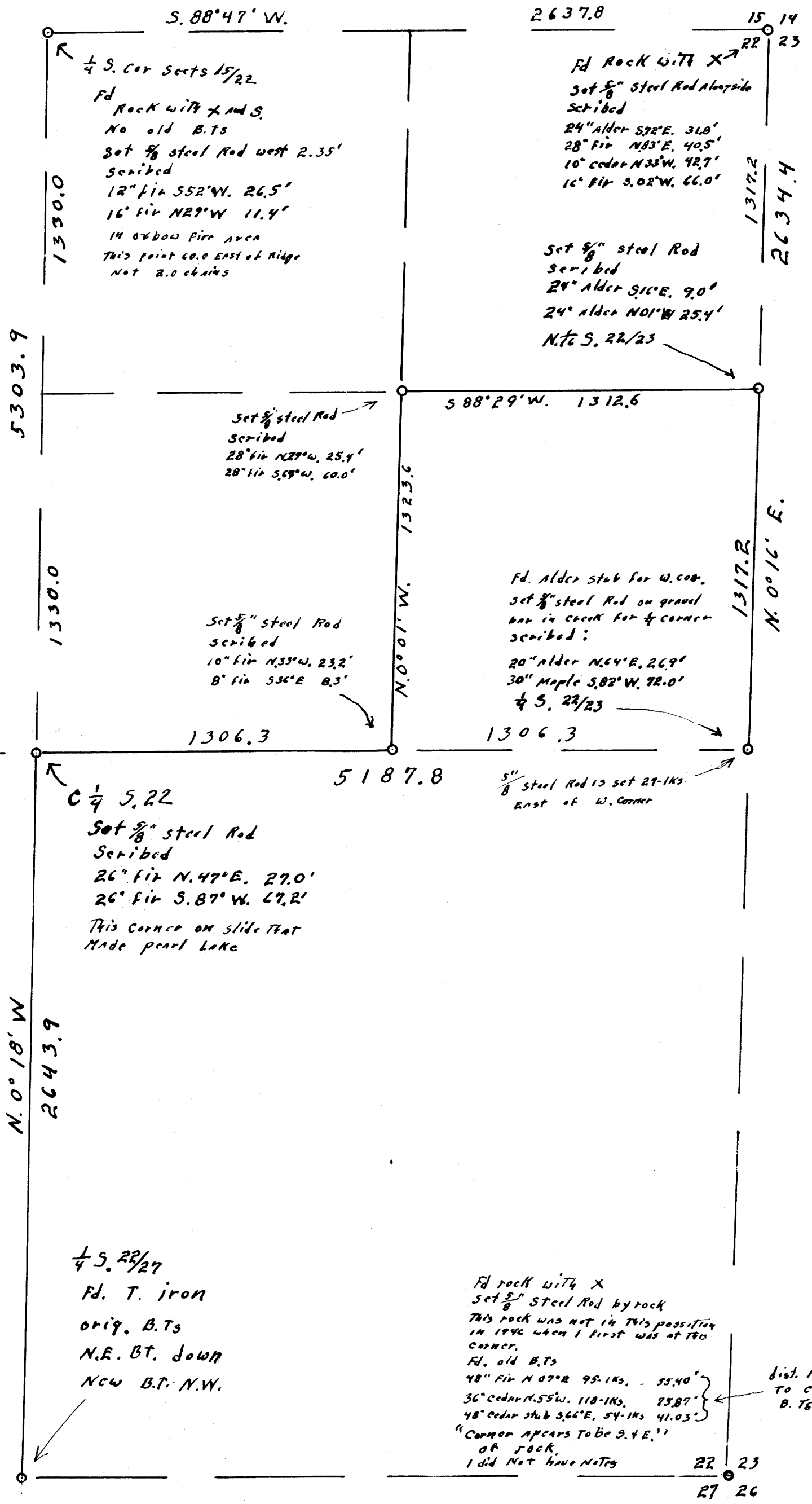


SECT. 22, T. 20 S., R. 7 W., W.M.  
Woolley Logging Co. DRAIN, OREG.  
Scale: 1"=400' No. 17, 1967

← Fd. B.L.M. Brass cap  
Set 1966  
For corner common to  
sects. 21, 22, 15+16  
T. 20 S., R. 7 W., W.M.  
in oxbow fire area



Bearings shown are calculated from  
Magnetic declination of 21° taken  
near the S.E. cor. of Sect. 22



← 1/4 S. 21+22 S. 88° 12' W.  
Fd. Rock for corner  
"Now a pile of sand"  
40" fir S. 36° E. 60-145  
Now 54-145  
4" fir West 10-145,  
Now 16" fir  
Rescribed this tree  
set 5/8" steel Rod for corner  
This corner in oxbow fire area

REGISTERED  
OREGON  
LAND SURVEYOR

*Wilford N. Haines*  
MAY 7, 1948  
WILFORD N. HAINES  
239

FILED  
RECEIVED  
NOV 29 1967

COUNTY SURVEYOR  
DOUGLAS COUNTY, ORE.