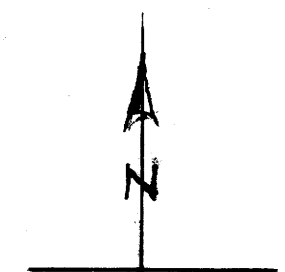
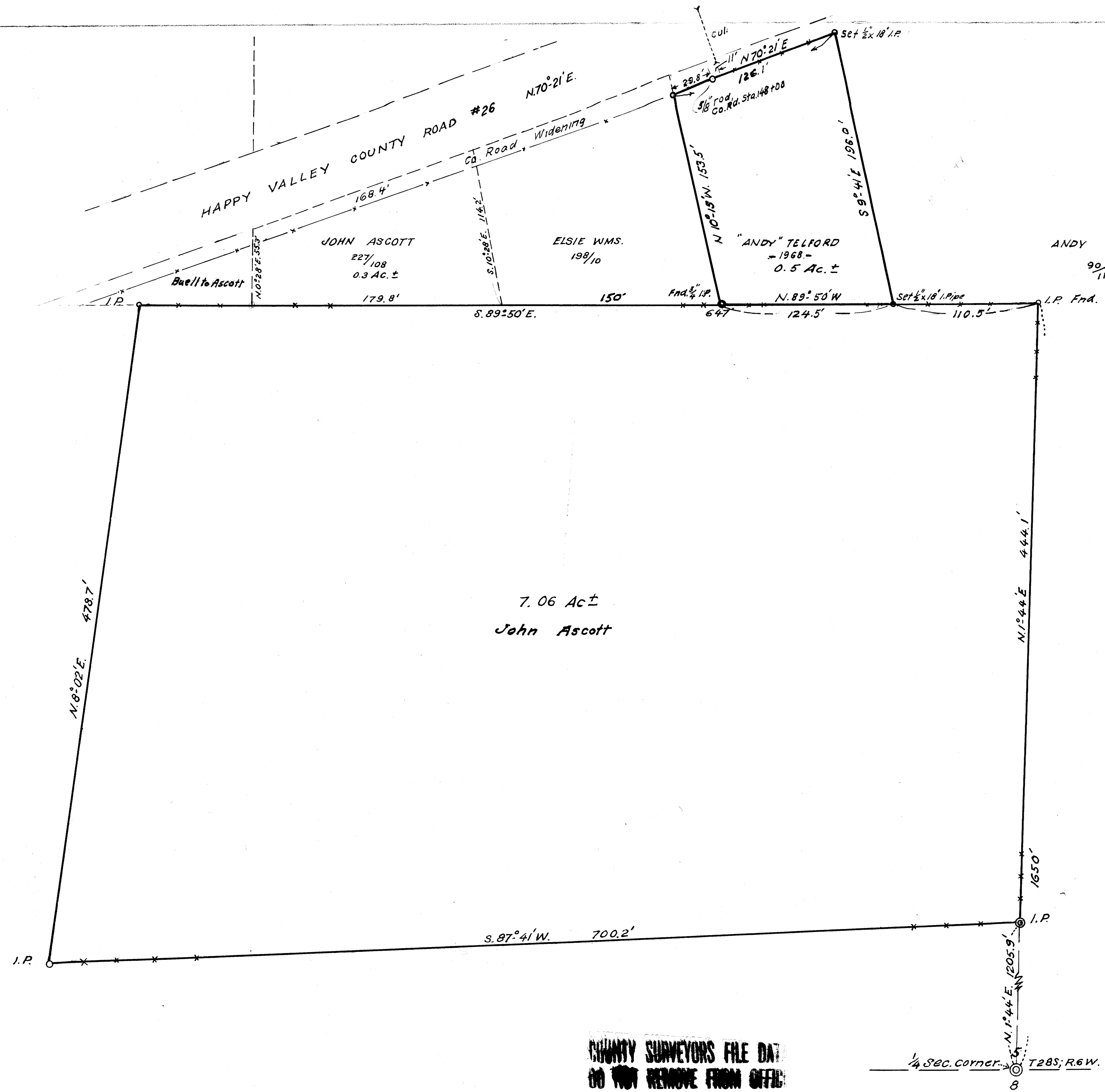


LL
COUNTY SURVEYOR
DOUGLAS COUNTY, ORE.



"ANDY" TELFORD
 1/2 AC ± IN SEC. 5, 28/6
 JAN. 1968 A.G. 1" = 50'

C. A. HEATER
 TO JOHN W. ASCOTT IN
 HAPPY VALLEY
 SEC 5, T. 28S; R. 6W., WM;
 DOUGLAS COUNTY, ORE.
 AUG. 1955. Boyer. 1" = 50'

**COUNTY SURVEYORS FILE DATA
 DO NOT REMOVE FROM OFFICE**