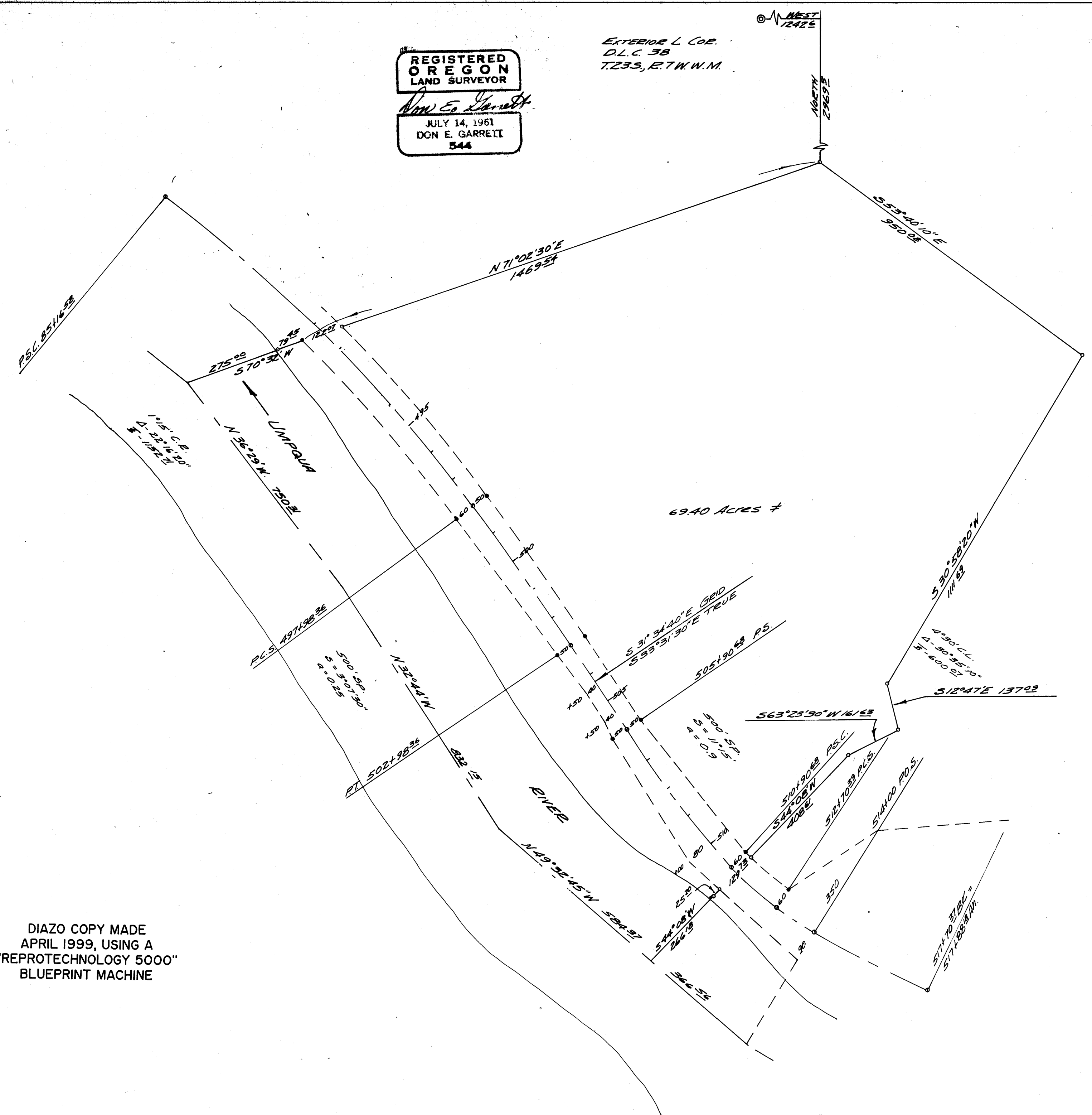


REGISTERED
OREGON
LAND SURVEYOR
Don E. Garrett
JULY 14, 1961
DON E. GARRETT
544

EXTERIOR L. COR.
D.L.C. 38
T.23S, R.7W.W.M.

LL
JAN 23 1968



• $\frac{3}{4}$ " IRON ROD FD.
• $\frac{3}{8}$ " IRON ROD SET

COUNTY SURVEYORS FILE DAY
DO NOT REMOVE FROM OFFICE

SURVEY FOR DEED DESCRIPTION
IN SEC. 34, T.23S, R.7W.W.M.
& SEC. 3, T.24S, R.7W.W.M.
SURVEYED FOR TIM LEFFLER
BY DON E. GARRETT
OCT., 1967
1" = 200'

DIAZO COPY MADE
APRIL 1999, USING A
"REPROTECHNOLOGY 5000"
BLUEPRINT MACHINE

MAP FILE M 35 T 28

SEE M 30-70