

SURVEY IN
 LOTS 175 AND 176 OF TRACT 1, PLAT 2,
 ROSEBURG ORCHARD CO.,
 DOUGLAS COUNTY, ORE.

SURVEYED FOR - L. E. HENNIGER
 SURVEYED BY - W. S. BARNES

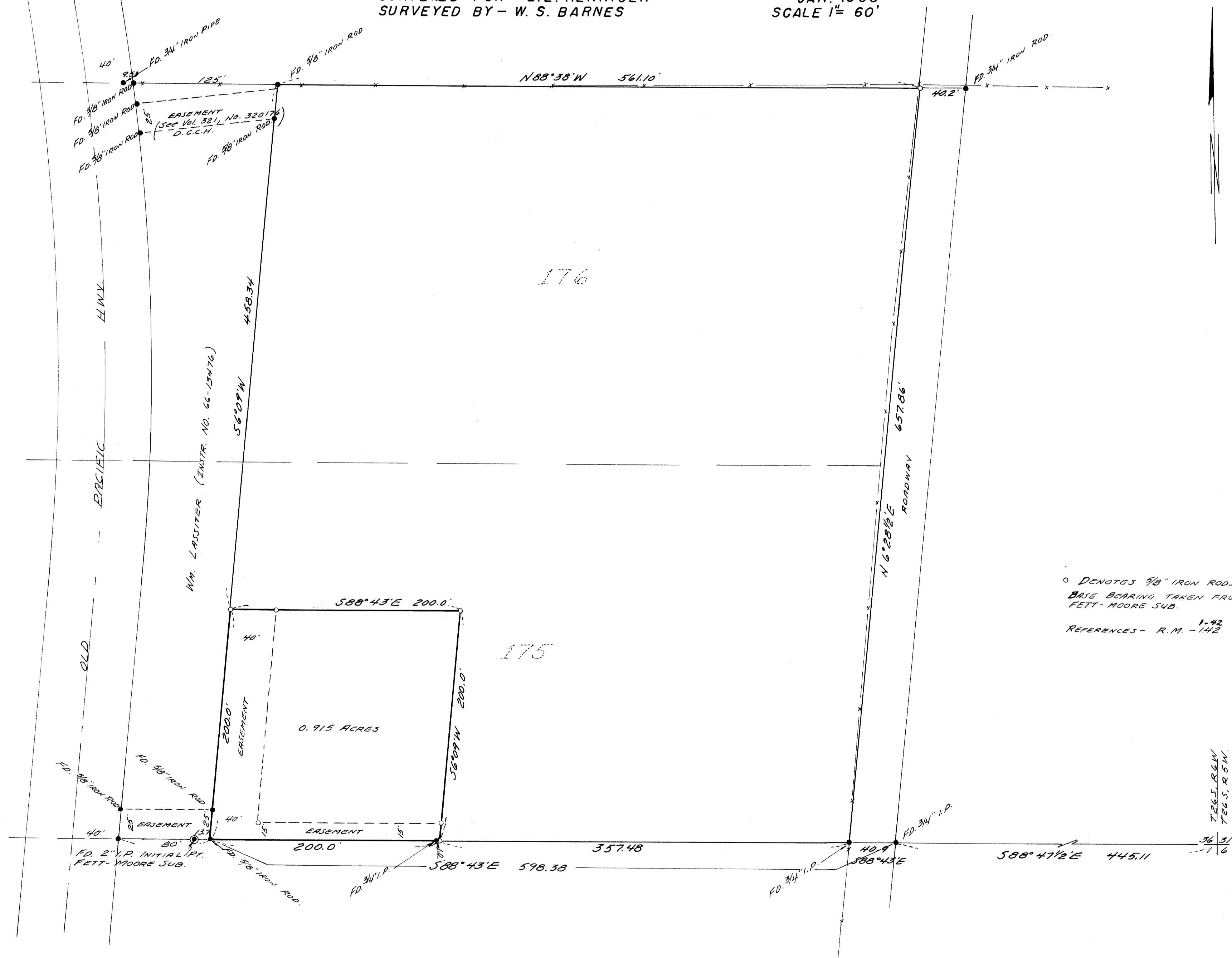
JAN. 1968
 SCALE 1" = 60'

COUNTY SURVEYORS FILE DATA
 DO NOT REMOVE FROM OFFICE

FILED
 RECEIVED

JAN 10 1968

COUNTY SURVEYOR
 DOUGLAS COUNTY, ORE.



o DENOTES 3/8" IRON RODS SET.
 BASE BEARING TAKEN FROM NORTH LINE OF
 FETT-MOORE SUB.
 1-42
 REFERENCES - R.M. - 142 & M26-54, C.S. FILES.



MAP FILE 11-35-7-25

MAP FILE 11-35-7-25