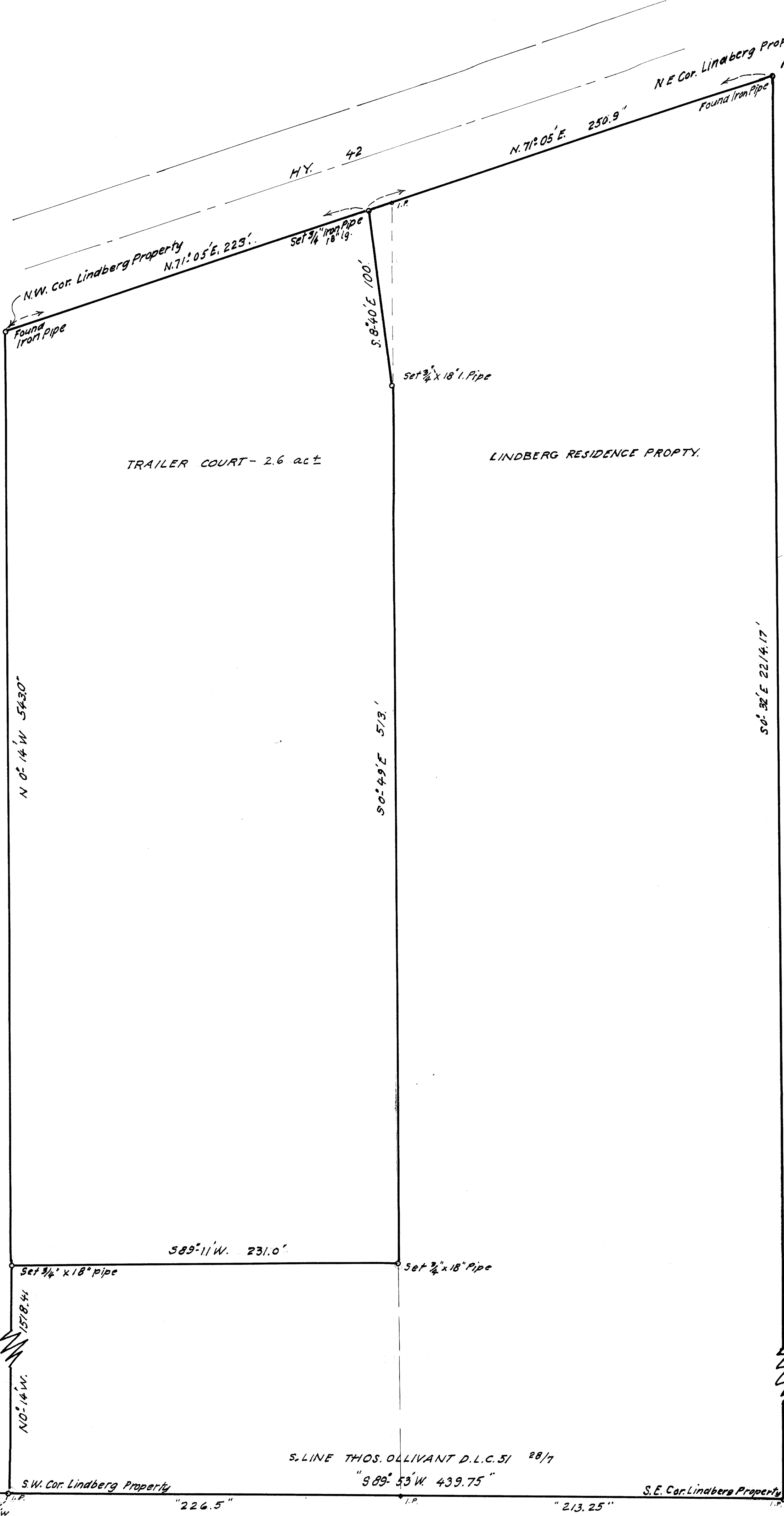


FILED
RECEIVED

JAN 8 1968

COUNTY SURVEYOR
DOUGLAS COUNTY, ORE.



TRAILER COURT - 2.6 ac ±

LINDBERG RESIDENCE PROPTY.



COUNTY SURVEYORS FILE DATA
DO NOT REMOVE FROM OFFICE

BERTIL & ANNA ELIZABETH LINDBERG.	
ACREAGE IN THOS. OLLIVANT D.L.C. 51, SEC. 28, T28S; RTW; W.M.	
JAN. 1968	1" = 40 ft.

S.W. Cor. D.L.C. 51

589°53'W
226.5'

S. LINE THOS. OLLIVANT D.L.C. 51 28/7

"89° 53' W 439.75"

"213.25"