

FILED  
RECEIVED

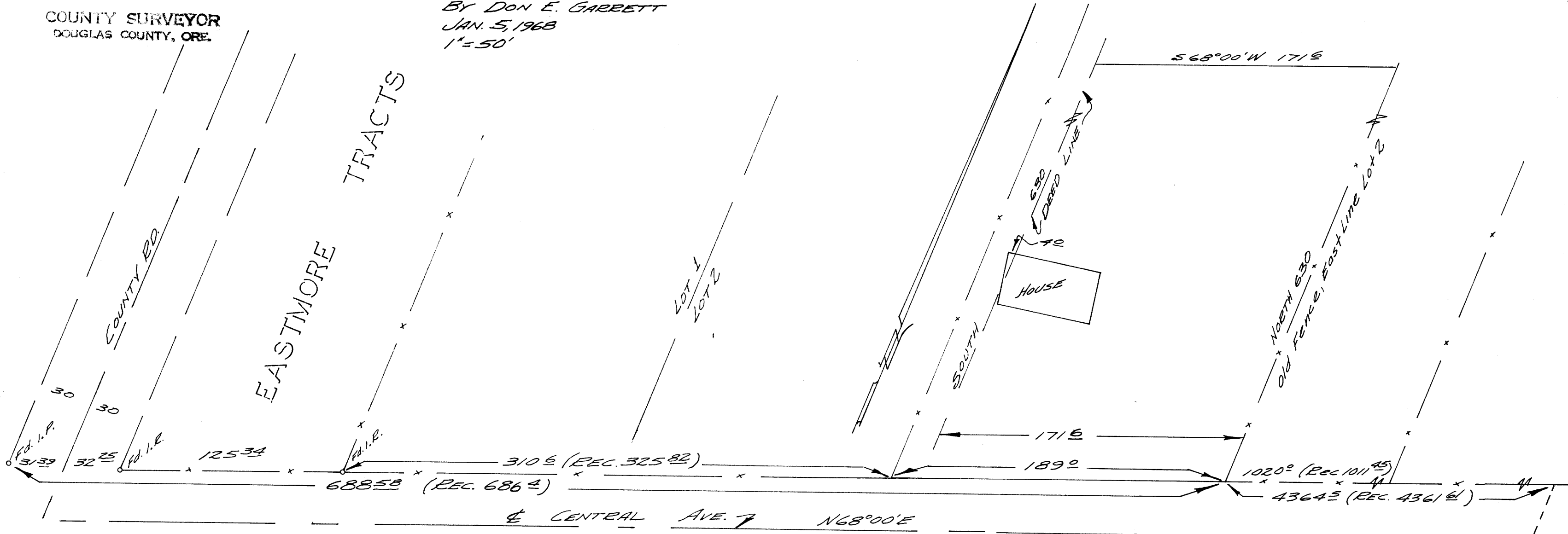
JAN 8 1968

COUNTY SURVEYOR  
DOUGLAS COUNTY, ORE.

COUNTY SURVEYORS FILE DATA  
DO NOT REMOVE FROM OFFICE

A PART OF LOT 2, BLOCK 1, PLAT D  
SUTHERLIN LAND & WATER CO.  
DOUGLAS CO., ORE.  
SURVEYED FOR COMMERCIAL TITLE CO.  
BY DON E. GARRETT  
JAN. 5, 1968  
1"=50'

MAP FILE M 357-23-3



Order No. 28,389

This is to certify that I have surveyed the property depicted herein and that the improvements thereon are located as I have shown by measurement.

REGISTERED  
OREGON  
LAND SURVEYOR

*Don E. Garrett*  
JULY 14, 1961  
DON E. GARRETT  
544

NOTE: THIS MAP IS FOR THE EXCLUSIVE USE OF COEN SUPPLY CO.

M 35-23