

A SURVEY ON THE NORTH LINE OF LOTS 19 & 20, PLAT H, ROSEBURG HOME ORCHARD TRACTS  
 Surveyed for the Douglas County Road Dept. by Don E. Garrett  
 January 8, 1968  
 Scale 1" = 100'

COUNTY SURVEYORS FILE DATA  
 DO NOT REMOVE FROM OFFICE

Bearings are based on the South Line of Porter's Subdivision.

o - Set 5/8" I. Rod

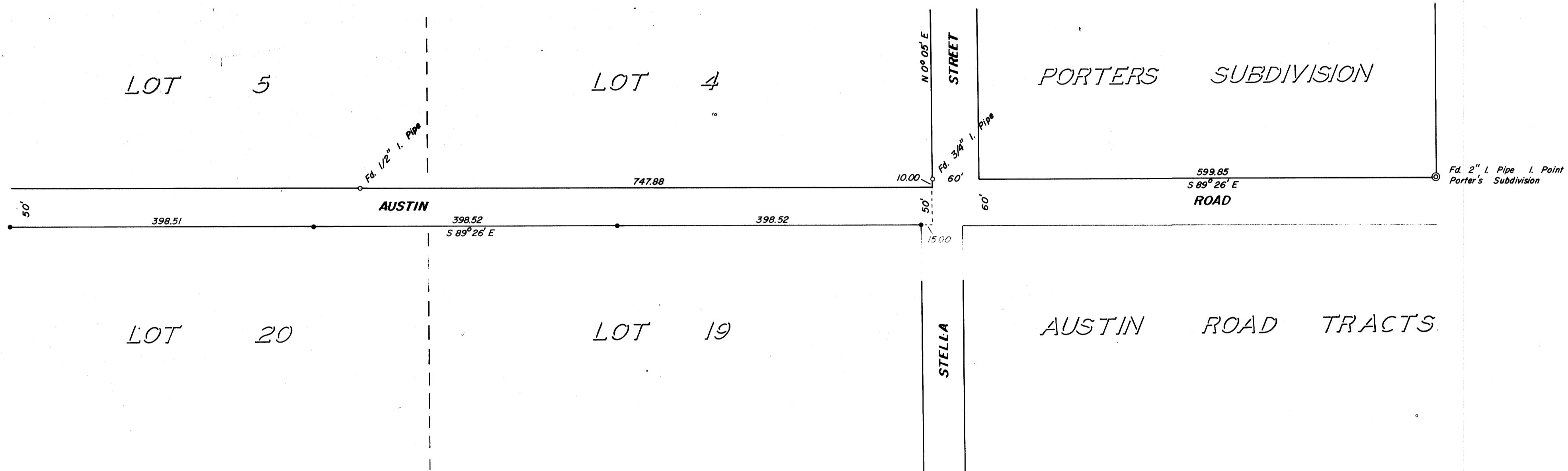
REGISTERED  
 OREGON  
 LAND SURVEYOR

*Don E. Garrett*  
 JULY 14, 1961  
 DON E. GARRETT  
 544

*LL*  
 RECEIVED

JAN 8 1968

COUNTY SURVEYOR  
 DOUGLAS COUNTY, ORE.



DIAZO COPY MADE  
 APRIL 1999, USING A  
 "REPROTECHNOLOGY 5000"  
 BLUEPRINT MACHINE