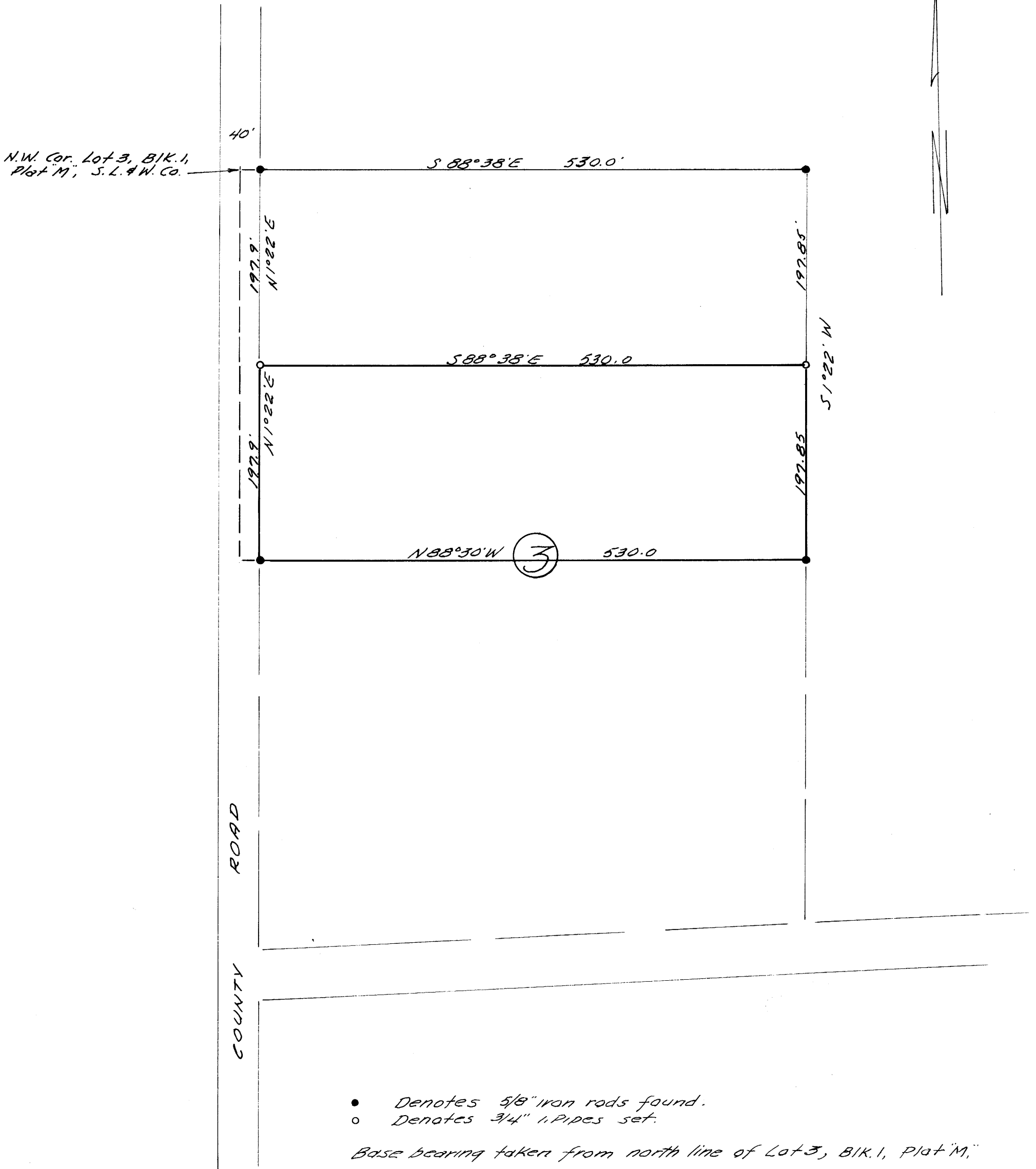


SURVEY TO ESTABLISH PROPERTY CORNERS IN LOT 3, BLOCK 1, PLAT "M", S. L. & W. CO. SUTHERLIN, ORE.

SURVEYED FOR - EMIL ANTONEN
SURVEYED BY - W.S. BARNES

DEC. 1967
SCALE 1" = 100'

(2)



- Denotes 5/8" iron rods found.
- Denotes 3/4" pipes set.

Base bearing taken from north line of Lot 3, Blk. 1, Plat "M."

FILED
RECEIVED

JAN 9 1968

COUNTY SURVEYOR
DOUGLAS COUNTY, ORE.

COUNTY SURVEYORS FILE DATA
DO NOT REMOVE FROM OFFICE

