

SURVEY IN SEC. 31, T26S, R6W, W.M.

Surveyed for Willard Nickolaus by Don E. Garrett
December 29, 1967

Scale 1" = 100'

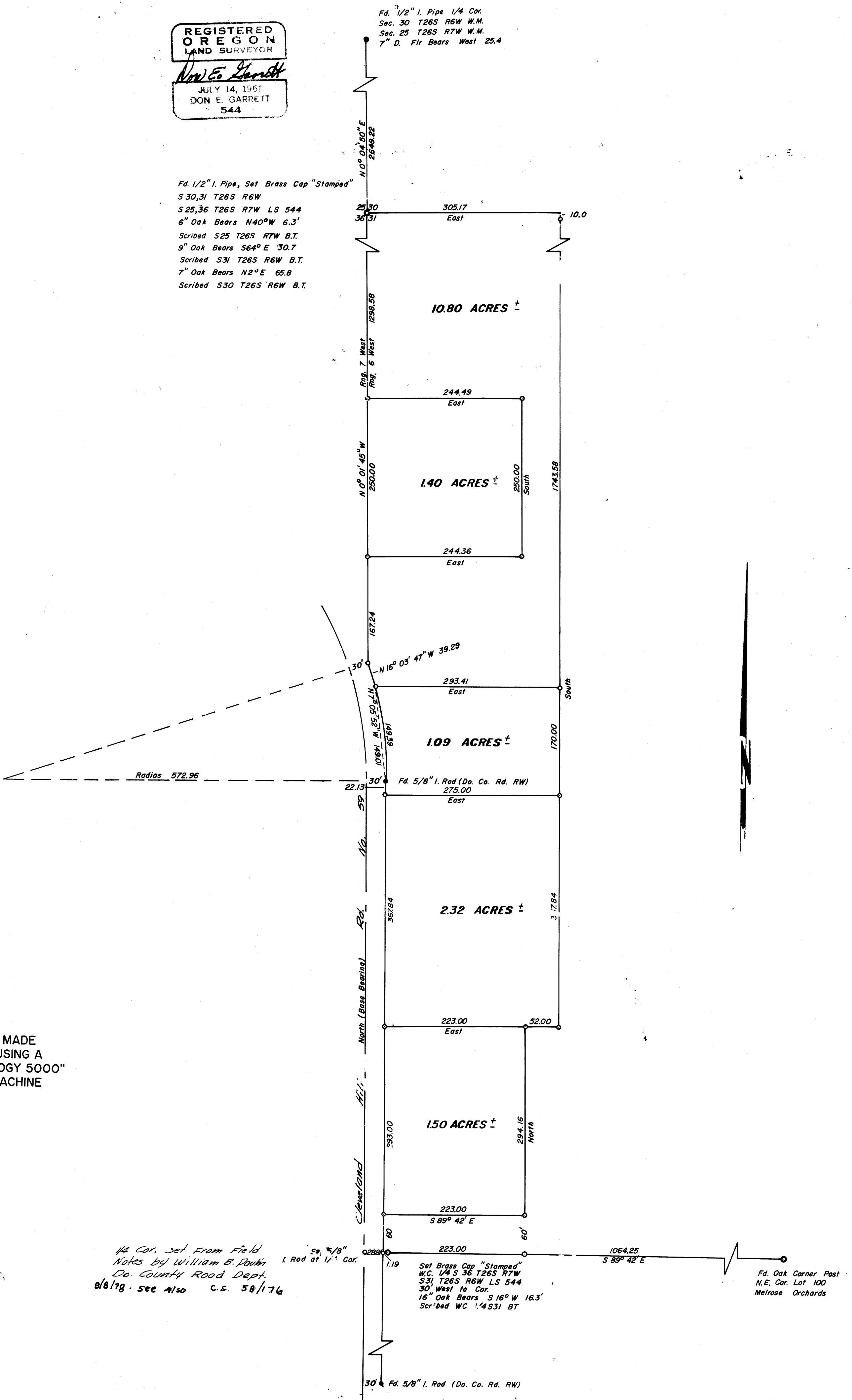
COUNTY SURVEYORS FILE DATA
DO NOT REMOVE FROM OFFICE

o - Set 5/8" I. Rod
o - Set Brass Cap

REGISTERED
OREGON
LAND SURVEYOR
Don E. Garrett
JULY 14, 1961
DON E. GARRETT
544

Fd. 1/2" I. Pipe, Set Brass Cap "Stamped"
S 30, 31 T 26 S R 6 W
S 25, 36 T 26 S R 7 W LS 544
6" Oak Bears N 40° W 6.3'
Scribed S 25 T 26 S R 7 W B.T.
9" Oak Bears S 64° E 30.7
Scribed S 31 T 26 S R 6 W B.T.
7" Oak Bears N 2° E 65.8
Scribed S 30 T 26 S R 6 W B.T.

Fd. 1/2" I. Pipe 1/4 Cor.
Sec. 30 T 26 S R 6 W W.M.
Sec. 25 T 26 S R 7 W W.M.
7" D. Fir Bears West 25.4



DIAZO COPY MADE
APRIL 1999, USING A
"REPROTECHNOLOGY 5000"
BLUEPRINT MACHINE

JAN 29 1968
COUNTY SURVEYOR
DOUGLAS COUNTY, ORE

1/4 Cor. Set From Field
Notes by William B. Dookin
Do. County Road Dept.
8/8/78 - see also c.s. 58/176

Set Brass Cap "Stamped"
W.C. 1/4 S 36 T 26 S R 7 W
S 31 T 26 S R 6 W LS 544
30' West to Cor.
16" Oak Bears S 16° W 16.3'
Scribed WC 1/4 S 31 BT

Fd. Oak Corner Post
N.E. Cor. Lot 100
Melrose Orchards