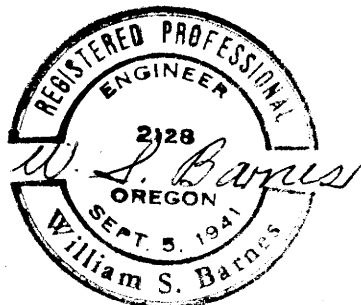
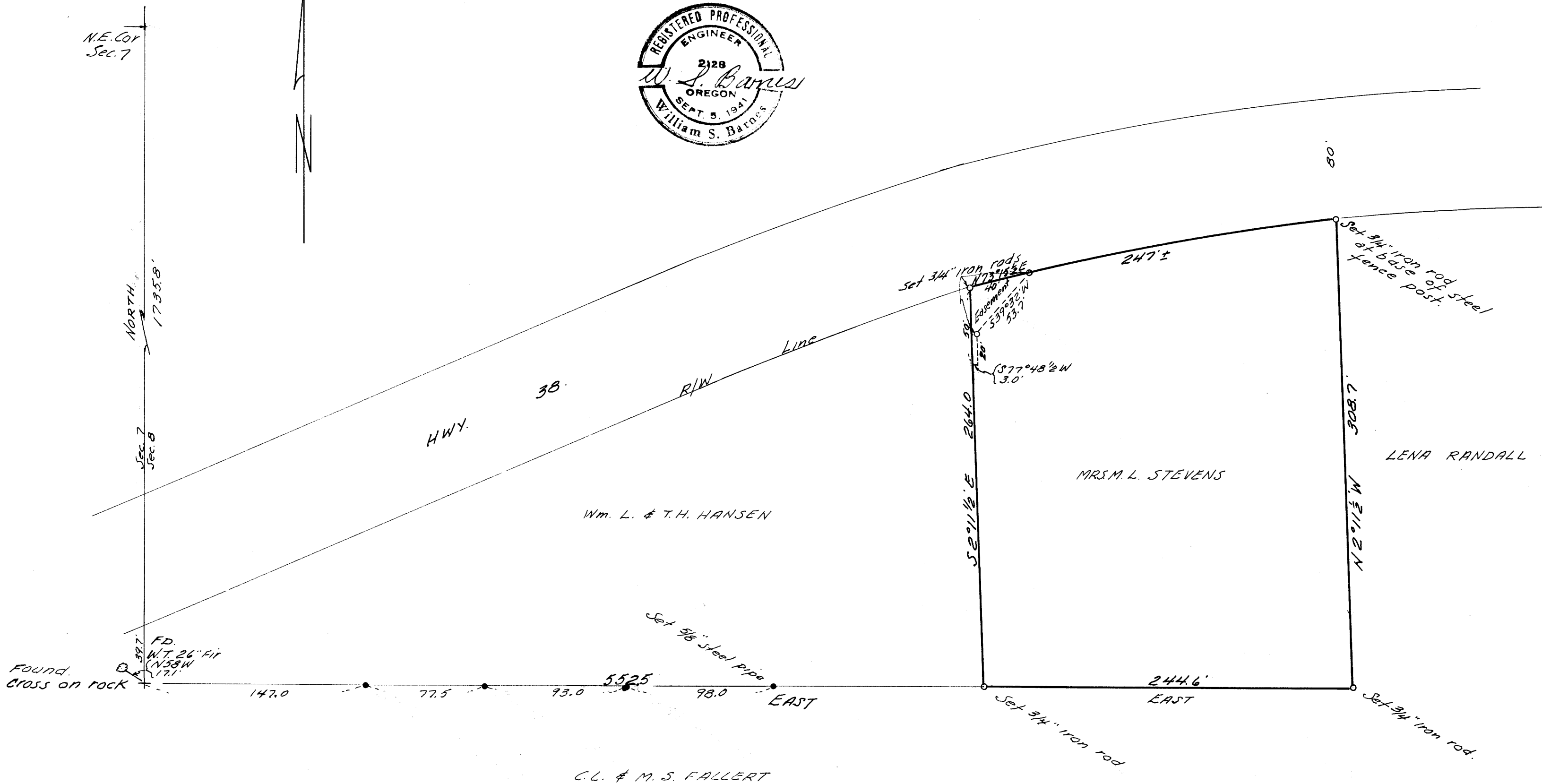


COUNTY SURVEYORS FILE DATA
DO NOT REMOVE FROM OFFICE

SURVEY TO ESTABLISH PROPERTY CORNERS
IN SEC. 8, T 22 S, R 9 W. W.M., DOUGLAS CO., ORE.
SURVEYED FOR- MRS. MERLE L. STEVENS
SURVEYED BY- W.S. BARNES
AUG. 1967
SCALE 1" = 60'



N.E. Cor
Sec. 7



- Denotes 5/8" steel pipes set.
- Base bearing taken from west line of Randall property.
- Reference M-5-39 C.S. File.

FILED
RECEIVED

DEC 29 1967

COUNTY SURVEYOR
DOUGLAS COUNTY, ORE.