

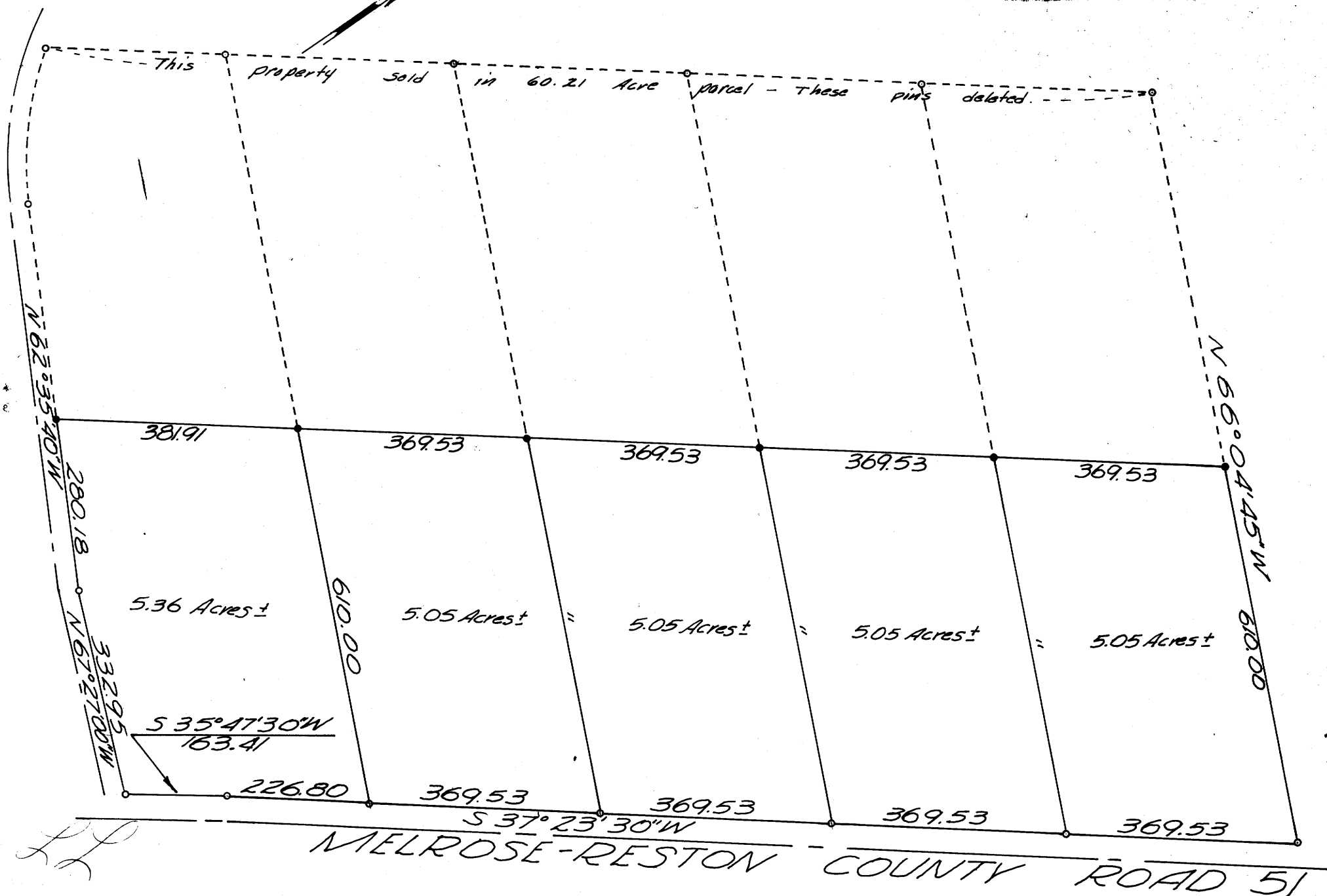
SURVEY TO CHANGE 10 ACRE TRACTS TO 5 ACRE TRACTS
 DLC 52, SEC. 21, T27S, R7W, WM. SEE M 22 - 76
 Surveyed for Hayward Reed by DON E. GARRETT
 Sept., 1967 Scale 1" = 200'
 •- Set 5/8" Iron Rod •- Fd. 5/8" Iron Rod

REGISTERED
 OREGON
 LAND SURVEYOR

Don E. Garrett

JULY 14, 1961
 DON E. GARRETT
 544

COUNTY SURVEYORS FILE DATA
 DO NOT REMOVE FROM OFFICE



SEP 22 1967

DIAZO COPY MADE
 APRIL 1999, USING A
 "REPROTECHNOLOGY 5000"
 BLUEPRINT MACHINE

MAP FILE M 34 - 58