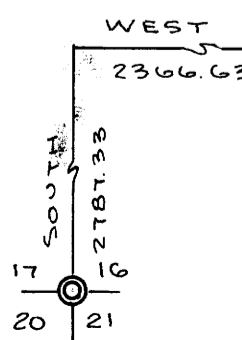
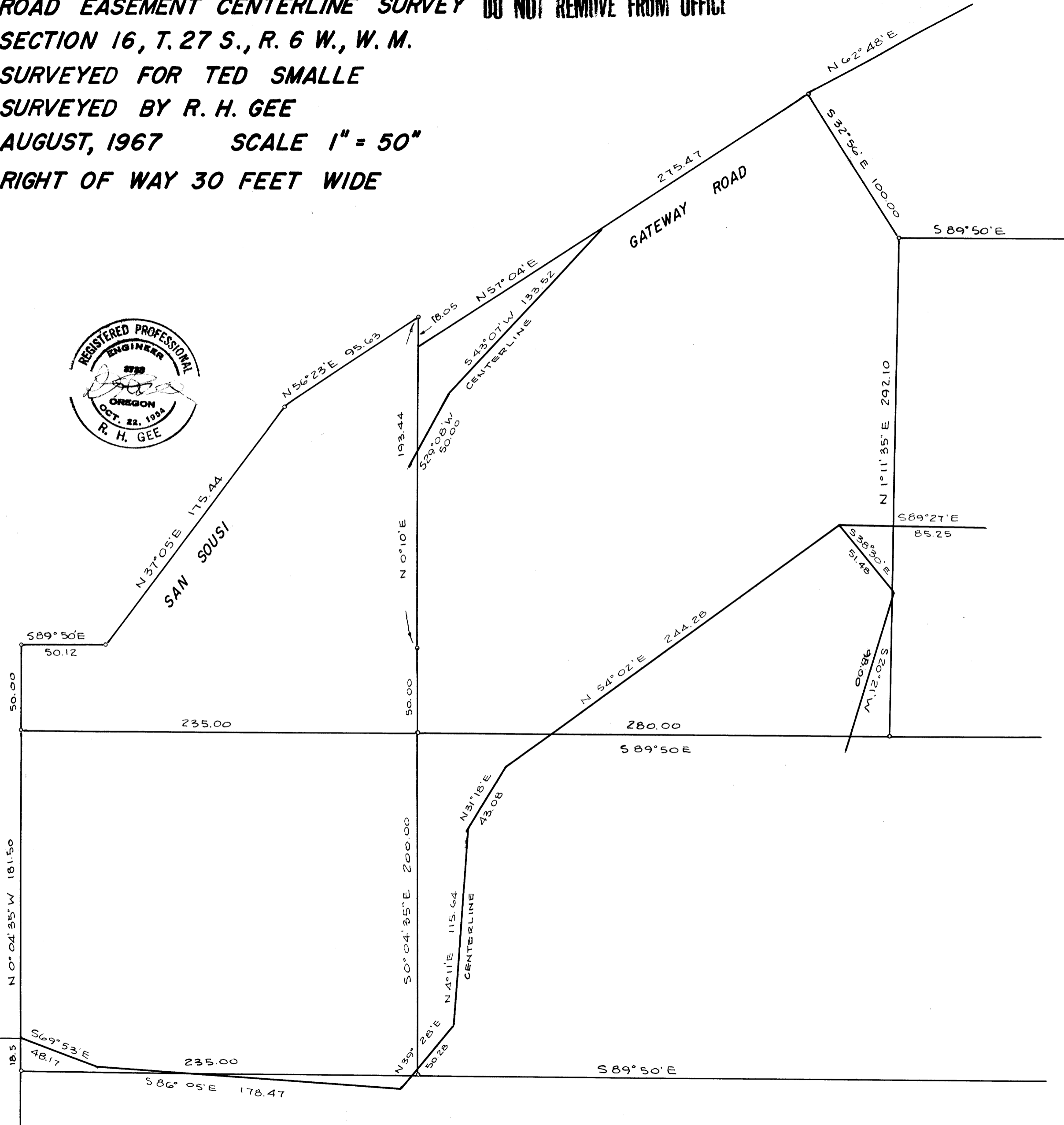
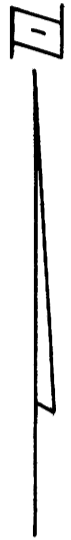


COUNTY SURVEYORS FILE DATA
DO NOT REMOVE FROM OFFICE

ROAD EASEMENT CENTERLINE SURVEY
SECTION 16, T. 27 S., R. 6 W., W. M.
SURVEYED FOR TED SMALLE
SURVEYED BY R. H. GEE
AUGUST, 1967 SCALE 1" = 50'
RIGHT OF WAY 30 FEET WIDE

MAP FILE NO. 34-1-55



FILED
RECEIVED

SEP 19 1967

COUNTY SURVEYOR
DOUGLAS COUNTY, OREGON

M 34-55