

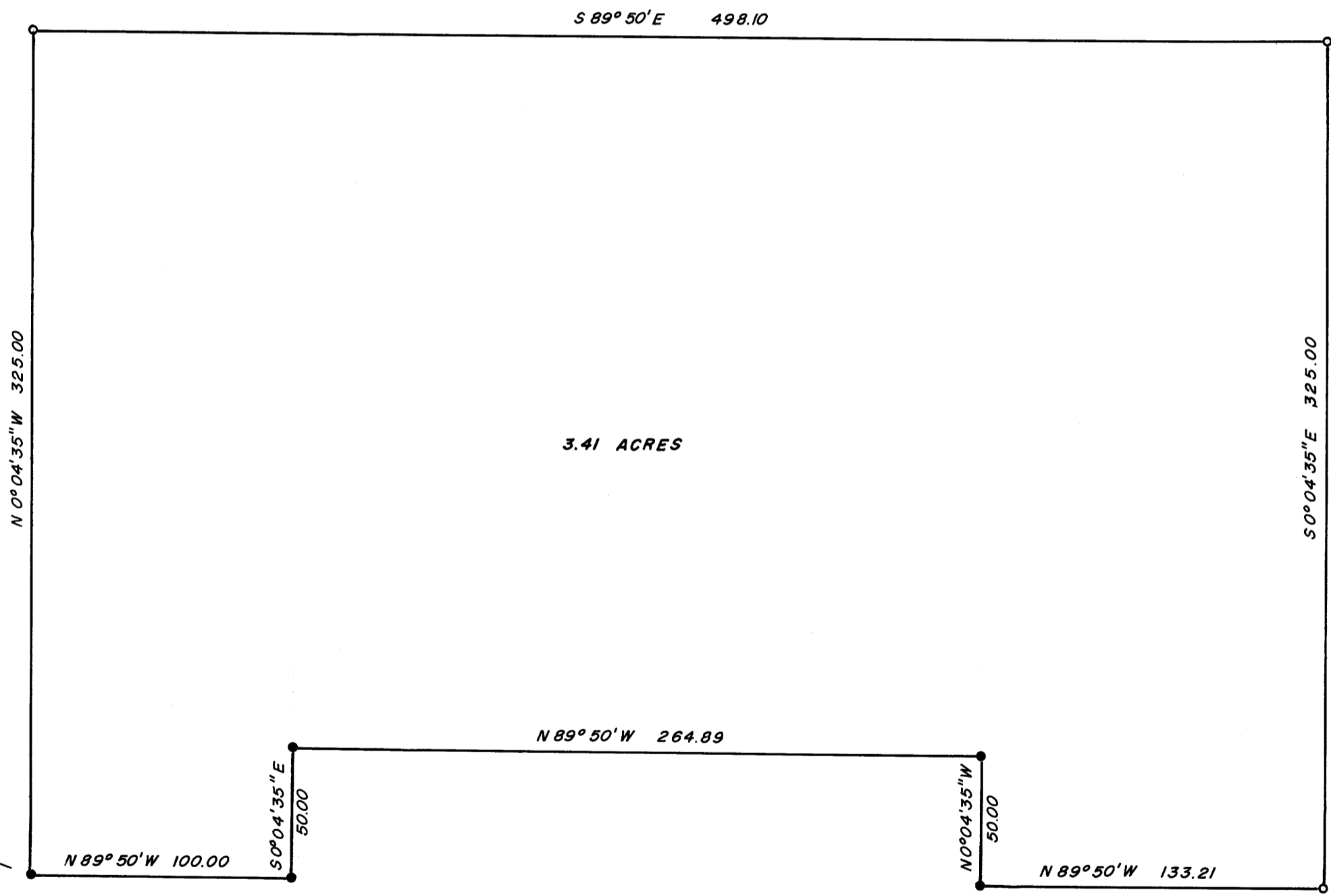
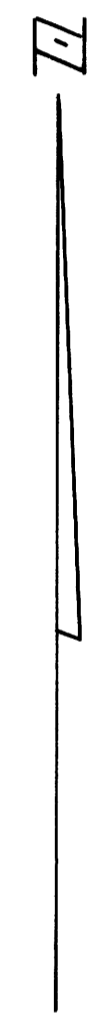
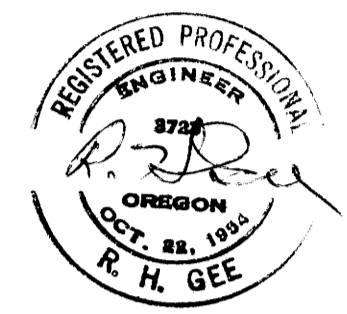
COUNTY SURVEYORS FILE DATA  
DO NOT REMOVE FROM OFFICE

SURVEY IN SECTION 16, T. 27 S., R. 6 W., W.M.  
SURVEYED FOR JOHN L. BELL  
SURVEYED BY R. H. GEE  
MAY, 1967 — SCALE 1" = 50'

FILED *R.H.G.*  
RECEIVED

MAY 16 1967

COUNTY SURVEYOR  
DOUGLAS COUNTY, ORE.



INITIAL POINT  
SW COR. SEC. 16, T. 27 S., R. 6 W., W.M.  
BEARS SOUTH 2048.83' AND  
WEST 2367.60'

- DENOTES 5/8" I. ROD FD.
- DENOTES 5/8" I. ROD SET

BEARINGS BASED ON SOLAR OBSERVATION