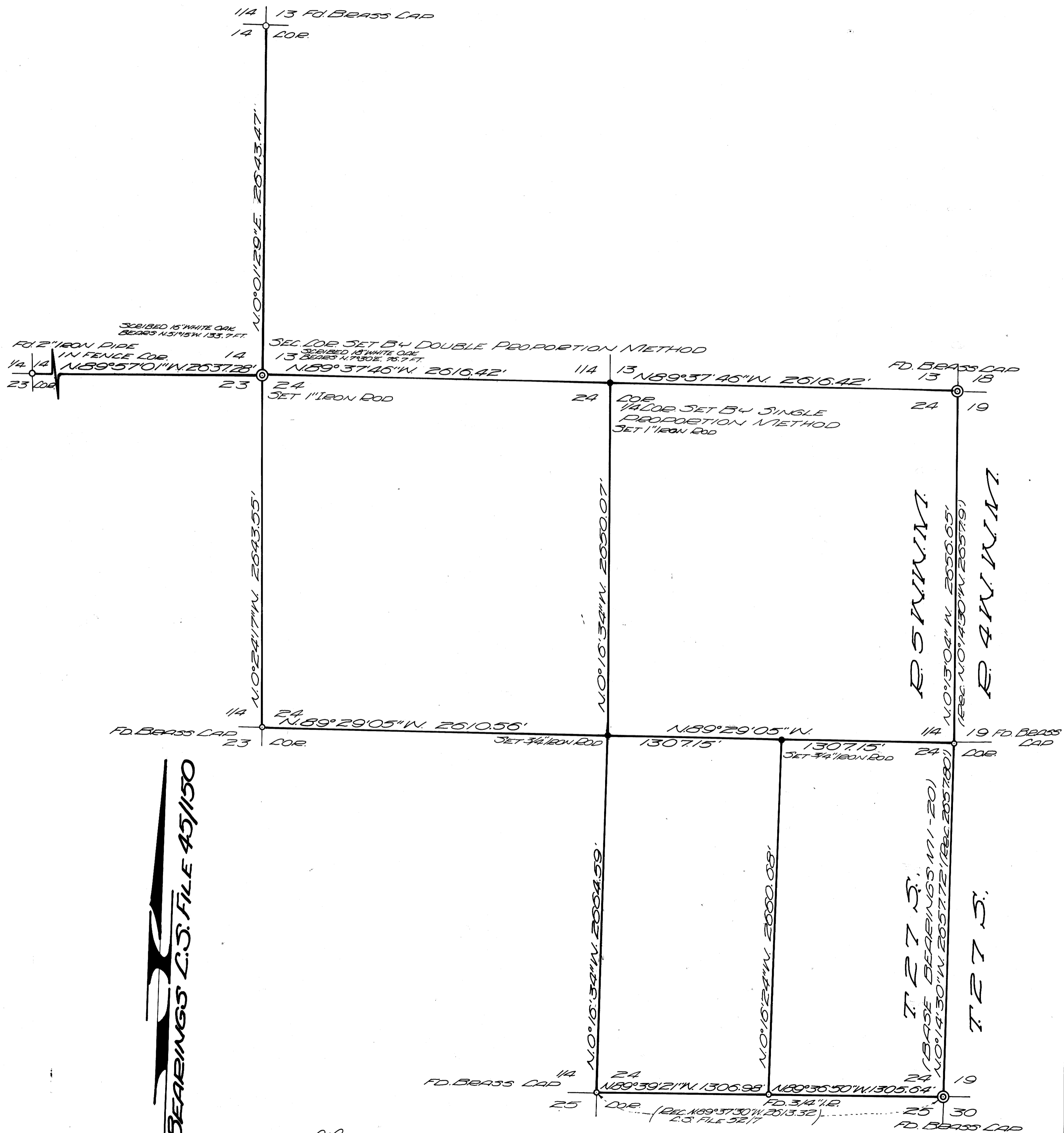


SURVEY TO SET SEC. 1/4 & 1/16 COR. IN SEC. 24, TWP 27 S., R. 5 W. W.M. FOR KING SUBDIVIDERS JULY 20, 1967 BY BAUGHMAN & ACKARET INC. SCALE 1" = 500' AUGUST 14, 1967

REGISTERED
OREGON
LAND SURVEYOR
Glenn S. Baughman
JULY 14, 1961
GLENN S. BAUGHMAN
536



BASE BEARINGS C.S. FILE 45/150

FILED
RECEIVED
AUG 20 1967
COUNTY SURVEYOR
DOUGLAS COUNTY, OR.