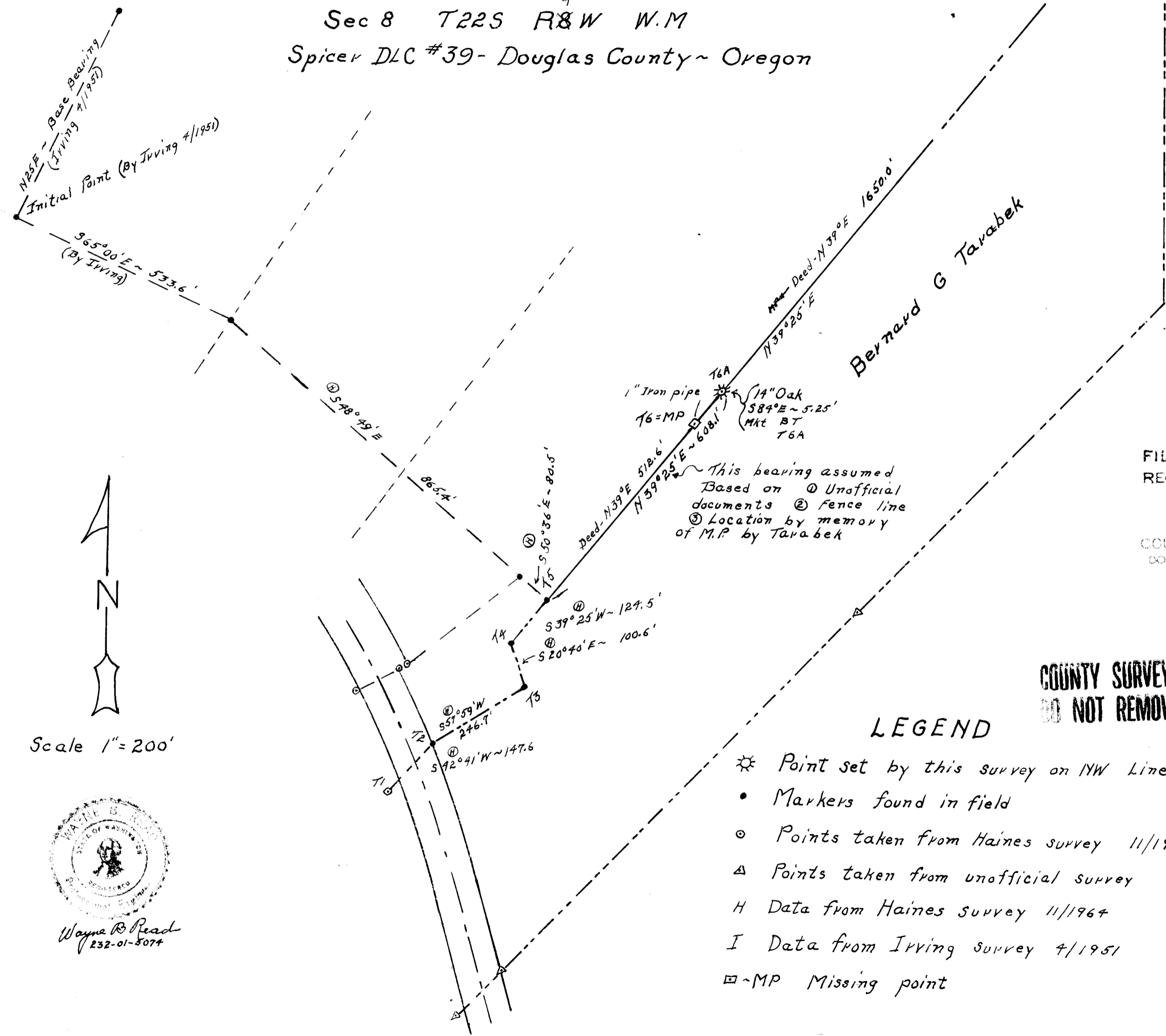


Survey to Relocate NW Line Tarabek Property
 Sec 8 T22S R8W W.M
 Spicer DLC #39- Douglas County ~ Oregon



N25E - Base Bearing
 (By Irving 4/1951)
 Initial Point (By Irving 4/1951)
 S65°00'E ~ 533.6'
 (By Irving)



Scale 1" = 200'



Wayne R. Read
 232-01-5074

1" Iron pipe
 T6=MP
 14" Oak
 S84°E ~ 5.25'
 MKT BT
 T6A

This bearing assumed
 Based on 1 Unofficial
 documents 2 fence line
 3 Location by memory
 of M.P. by Tarabek

FILED
 RECEIVED

MAY 5 1967

COUNTY SURVEYOR
 DOUGLAS COUNTY, ORE.

**COUNTY SURVEYORS FILE DATA
 DO NOT REMOVE FROM OFFICE**

LEGEND

- ☼ Point set by this survey on NW Line
- Markers found in field
- Points taken from Haines survey 11/1964
- △ Points taken from unofficial survey
- H Data from Haines survey 11/1964
- I Data from Irving survey 4/1951
- -MP Missing point