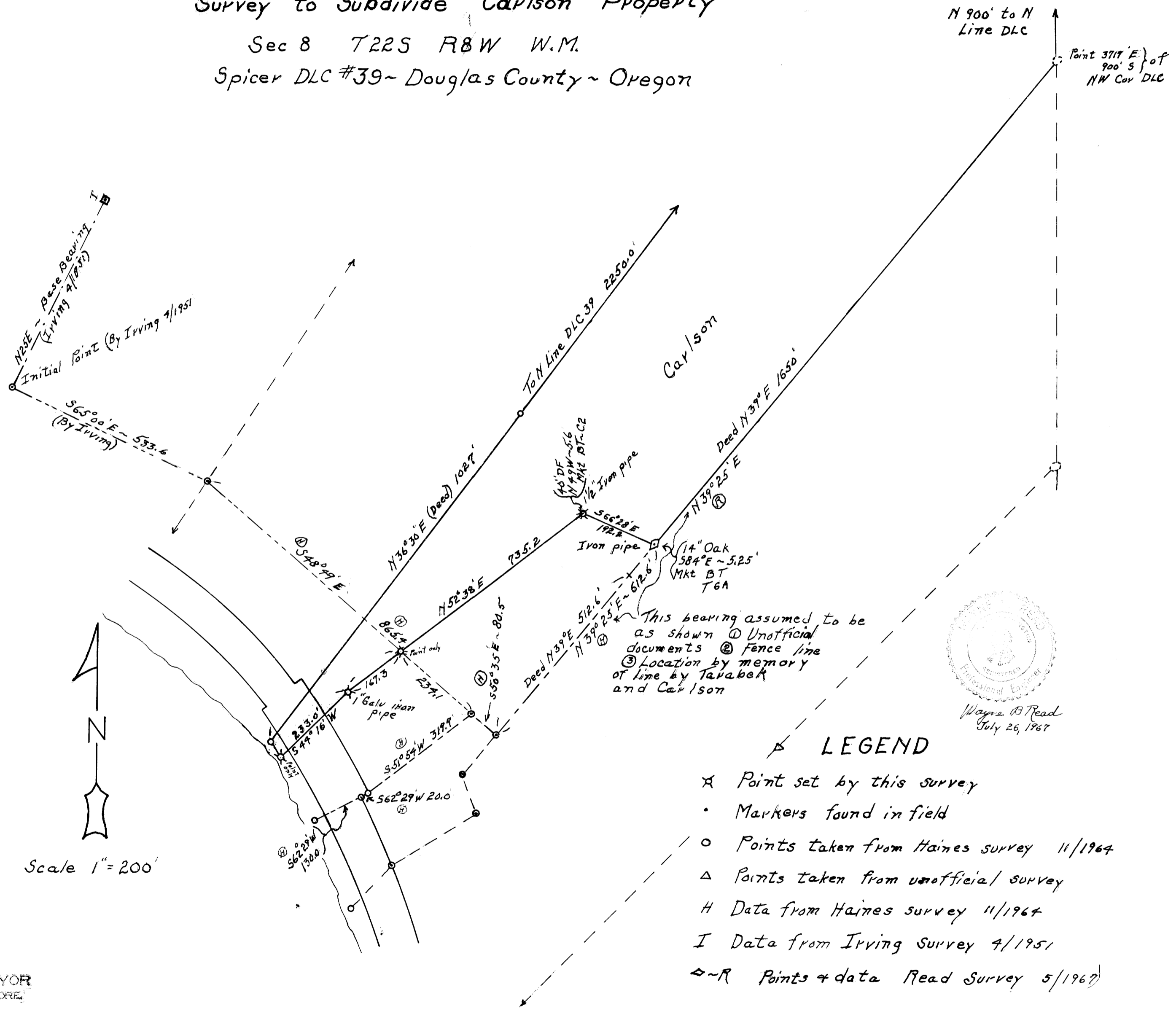


COUNTY SURVEYORS FILE DATA
DO NOT REMOVE FROM OFFICE

Survey to Subdivide Carlson Property
Sec 8 T22S R8W W.M.
Spicer DLC #39 - Douglas County - Oregon



FILED
RECEIVED
AUG 10 1967
COUNTY SURVEYOR
DOUGLAS COUNTY, ORE.

MAP FILE M32.4-38