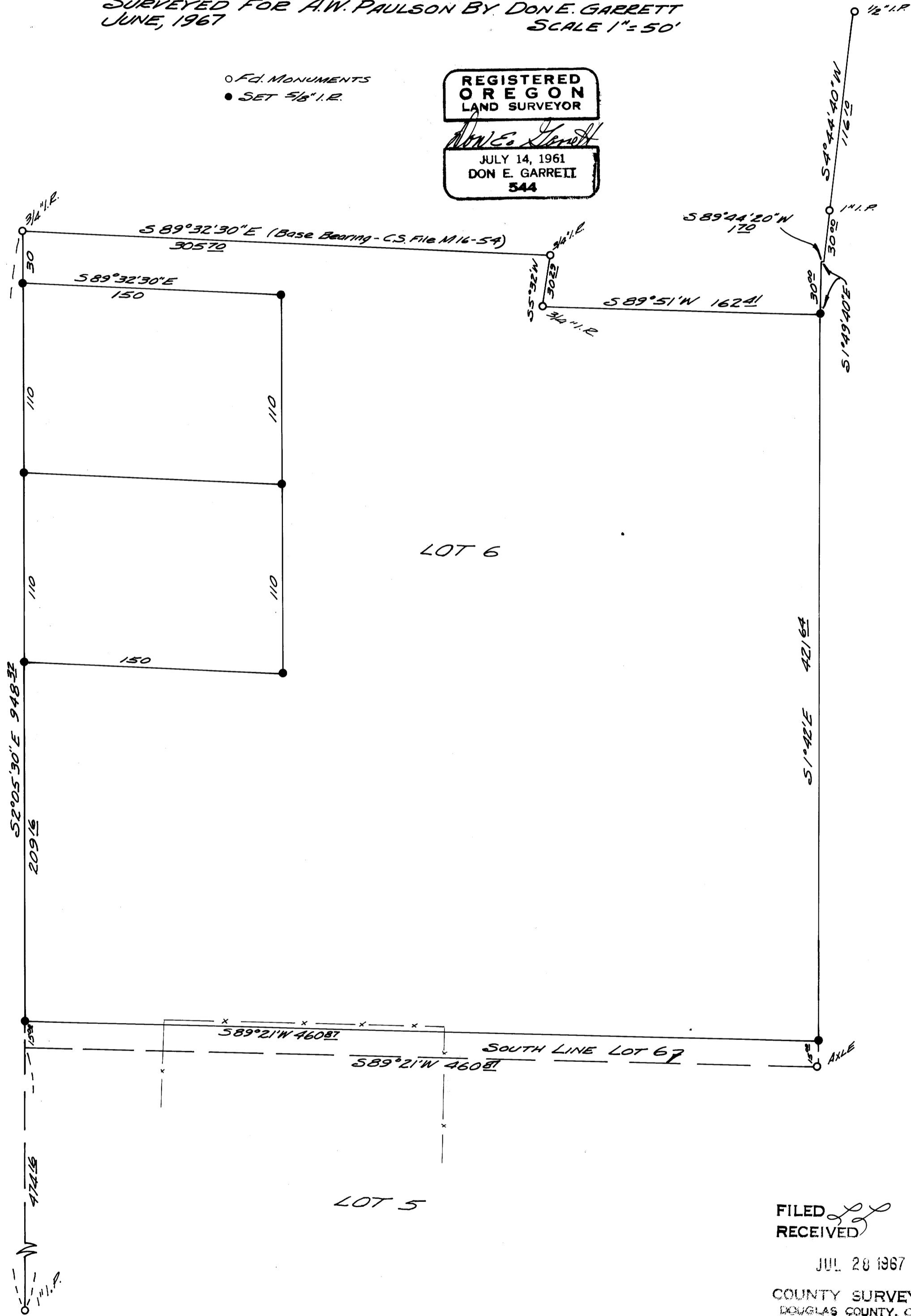


SURVEY TO SET PROPERTY CORNERS  
IN THE WEST HALF OF LOTS 5 & 6, FRUITVALE  
DOUGLAS COUNTY, OREGON  
SURVEYED FOR A.W. PAULSON BY DON E. GARRETT  
JUNE, 1967  
SCALE 1" = 50'

○ Fd. MONUMENTS  
● SET 5/8" I.R.

REGISTERED  
OREGON  
LAND SURVEYOR  
*Don E. Garrett*  
JULY 14, 1961  
DON E. GARRETT  
544



FILED  
RECEIVED

JUL 20 1967

COUNTY SURVEYOR  
DOUGLAS COUNTY, ORE.