

SECT. 14, T. 22 S., R. 9 W. W. M.

Scale: 1" = 400'

July, 1967.

For August Sagaberd Est.

REGISTERED OREGON LAND SURVEYOR
Wilford N. Haines
MAY 7, 1948
WILFORD N. HAINES
239

5068.8

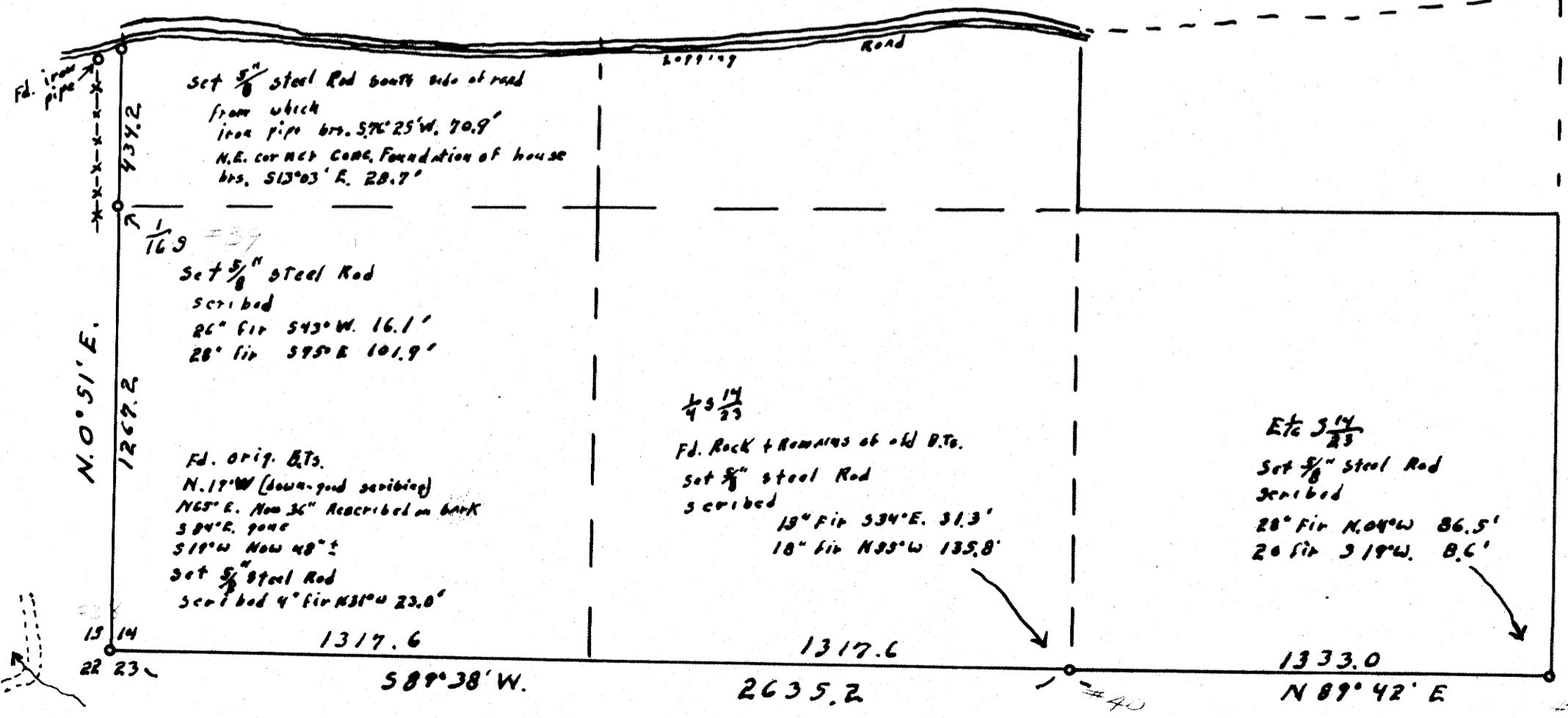
10 11
15 14

FILED RECEIVED

JUL 28 1967

COUNTY SURVEYOR
DOUGLAS COUNTY, ORE.

← UMPQUA RIVER ←



Ed. Rock with chisel marks 1" hex steel driven alongside old fir Sagab. E. 0.145 (Not 2.85E.) No other trees that I could make fit for other B.Ts. old signs to east indicated this point has been used for 50 yrs. or more for the corner Top of ridge to West & North fits orig. Notes

1333.0
2666.0
14 13
23 24
2613.5
(by triangulation)

4 3 13
N 65° E. 3840
2000
519° W

S FILED 55/47
M 24 r 31
F.B. H. 96

M 24 r 31

