

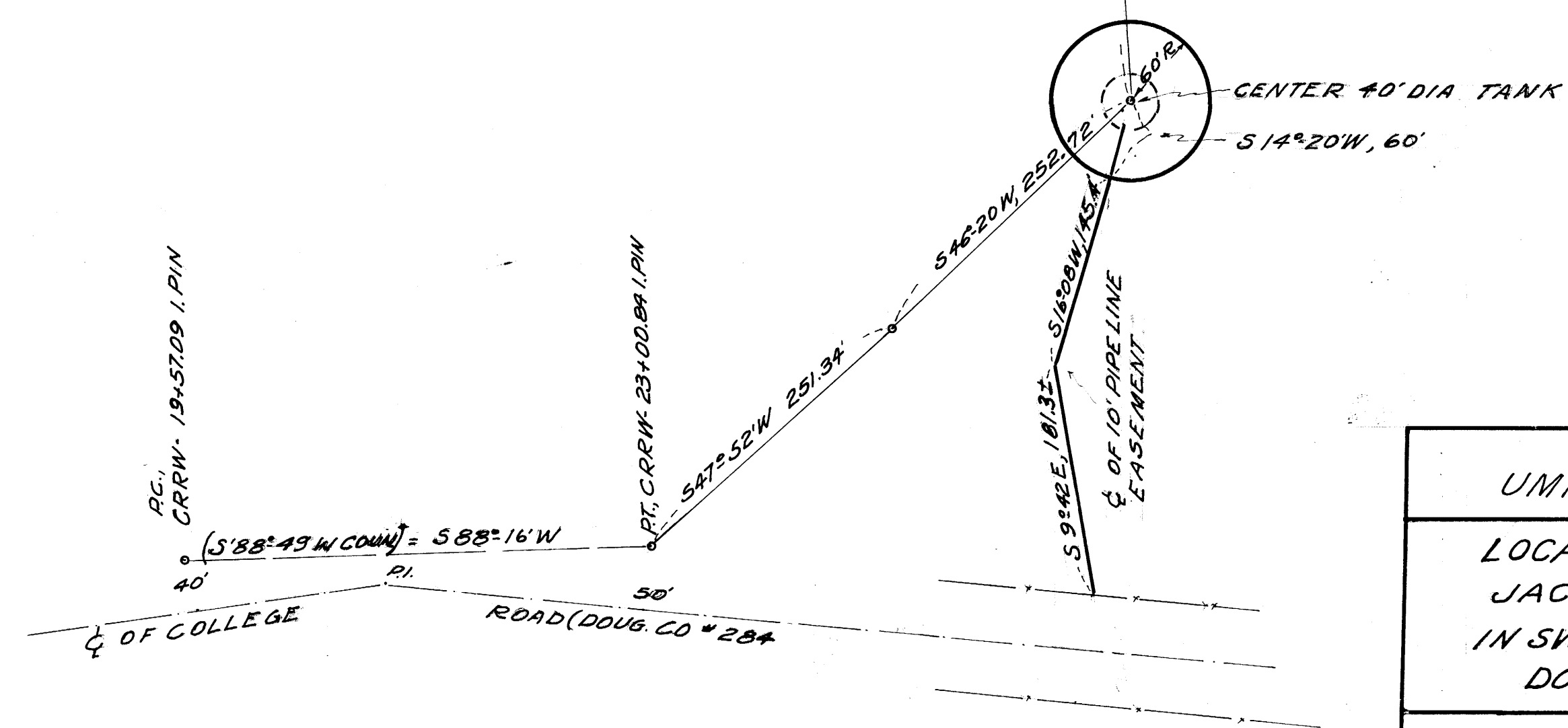
24
19
1/4 SEC COR.
T26S, T26S
R6W, R5W
W.M. W.M.

TIE, S 9°-58'-30"E, 1537.77'

NORTH

FILED
RECEIVED
MAY 9 1967
COUNTY SURVEYOR
DOUGLAS COUNTY, ORE.

BASED ON SOLAR



REGISTERED
OREGON
LAND SURVEYOR

Herbert L. Northcraft

JULY 8, 1966
HERBERT L. NORTHCRAFT
750

UMPQUA BASIN WATER ASSOC, INC.
LOCATION OF TANK SITE #1
ON
JACKSON RANCH INC.
IN SW 1/4, SEC. 19, T26S, R5W, W.M.
DOUGLAS COUNTY, ORE.

SCALE 1" = 100' APR. 1967

DRAWN BY, H.L.N.

COUNTY SURVEYORS FILE DATA
DO NOT REMOVE FROM OFFICE