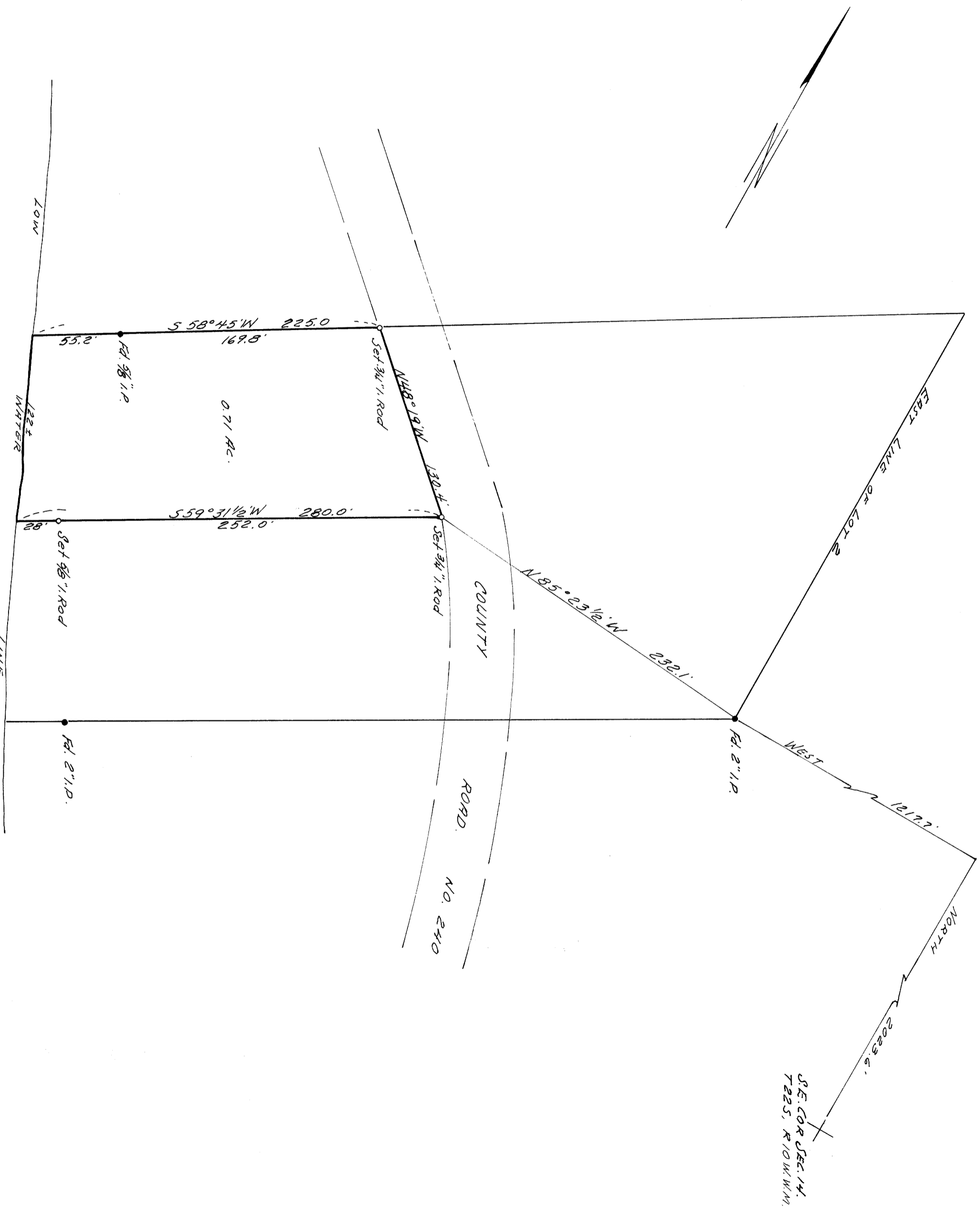


COUNTY SURVEYORS FILE DATA
DO NOT REMOVE FROM OFFICE

MAP OF SURVEY IN LOT 2, SEC. 14, T 22S, R 10W, W.M.
DOUGLASS COUNTY, ORE.

SURVEYED FOR - CHAS. D. ROSS
SURVEYED BY - W.S. BARNES

APRIL 1967
SCALE 1" = 60'



SE COR SEC. 14,
T 22S, R 10W W.M.

FILED
RECEIVED

MAY 31 1967

COUNTY SURVEYOR
DOUGLAS COUNTY, ORE.

