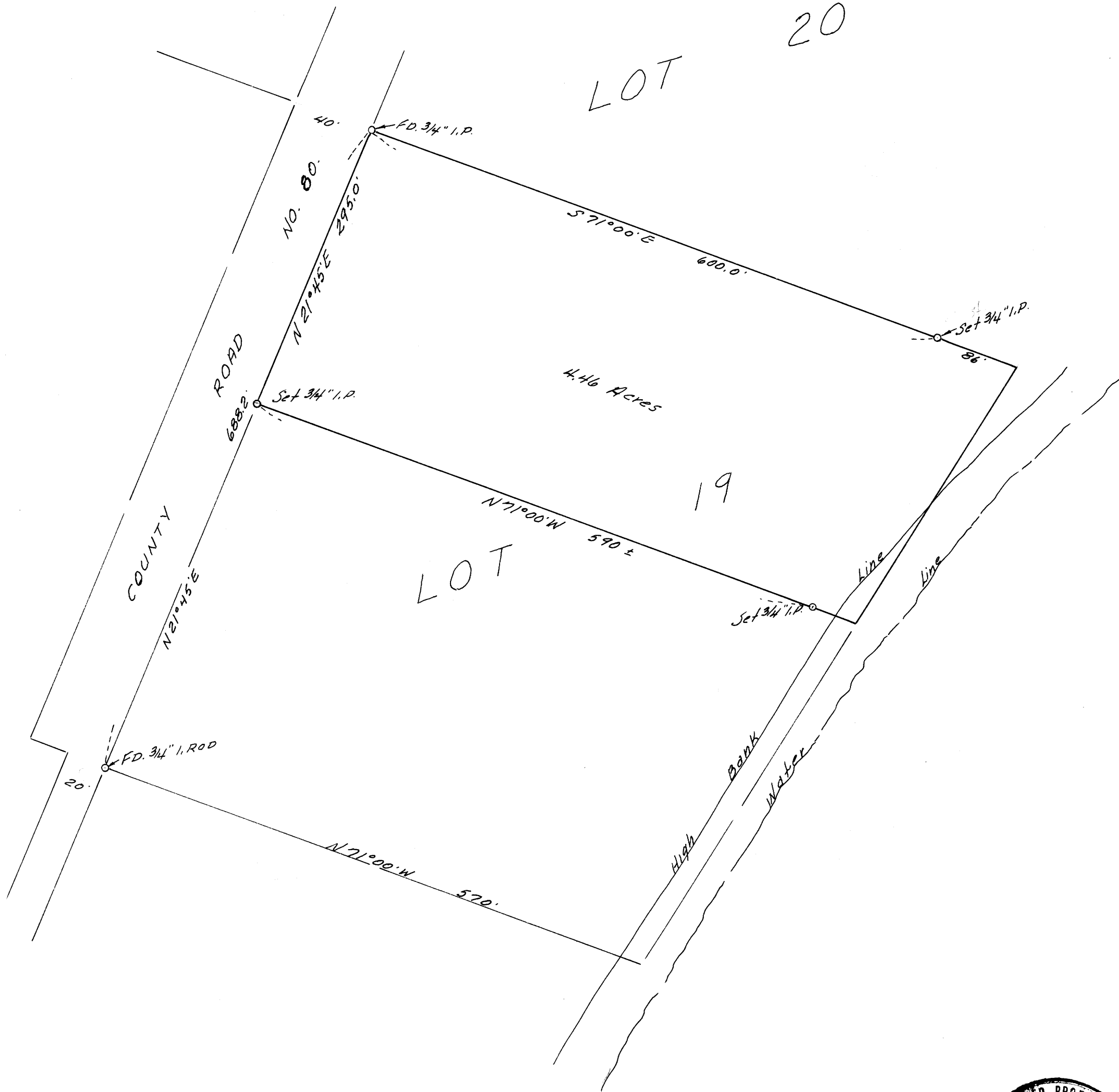


SURVEY IN LOT 19, BLOCK 1, N. CURRY ESTATE, PLAT "B".
DOUGLAS COUNTY, OREGON

SURVEYED FOR - B.A. YOUNG
SURVEYED BY - W.S. BARNES

APRIL 1967
SCALE - 1" = 50'

COUNTY SURVEYORS FILE DATA
DO NOT REMOVE FROM OFFICE



Reference - C.S. File 45-192
Base bearing taken from east line of Co. Rd. No. 80.

FILED
RECEIVED

MAY 2 1967

COUNTY SURVEYOR
DOUGLAS COUNTY, ORE.



M 34-1

MAP FILE M.34 + 1