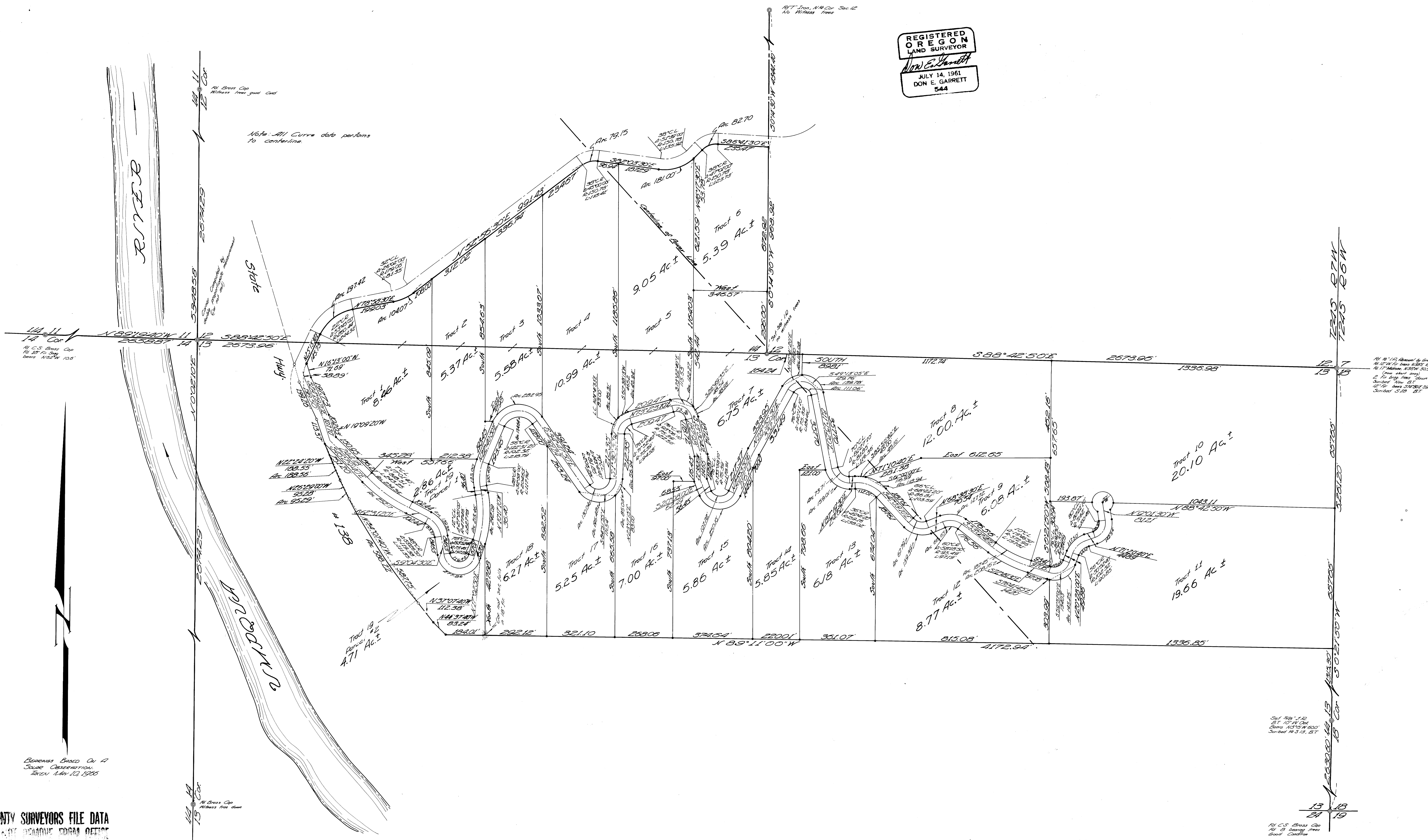


# A SURVEY TO ESTABLISH PROPERTY CORRS. IN SECS. 12 & 13 T24S R7W N.M. SURVEYED FOR RESORT PROPERTIES DEVELOPMENT CO. SURVEYED BY DON E. GARRETT AUGUST 2, 1966 SCALE 1"=200'

• Denotes set 20' I.R.  
○ Denotes set 30' I.R.

REGISTERED  
OREGON  
LAND SURVEYOR  
*Don E. Garrett*  
JULY 14, 1961  
DON E. GARRETT  
544



Note: All Curves data pertains to centerline.

Bearings Based On A  
Solar Observation  
Taken May 12, 1966

Set 20' I.R.  
Set 30' I.R.  
Bearing 103°55'W 000'  
Corner 10-12, 21

Set 20' I.R.  
Set 30' I.R.  
Bearing 103°55'W 000'  
Corner 10-12, 21