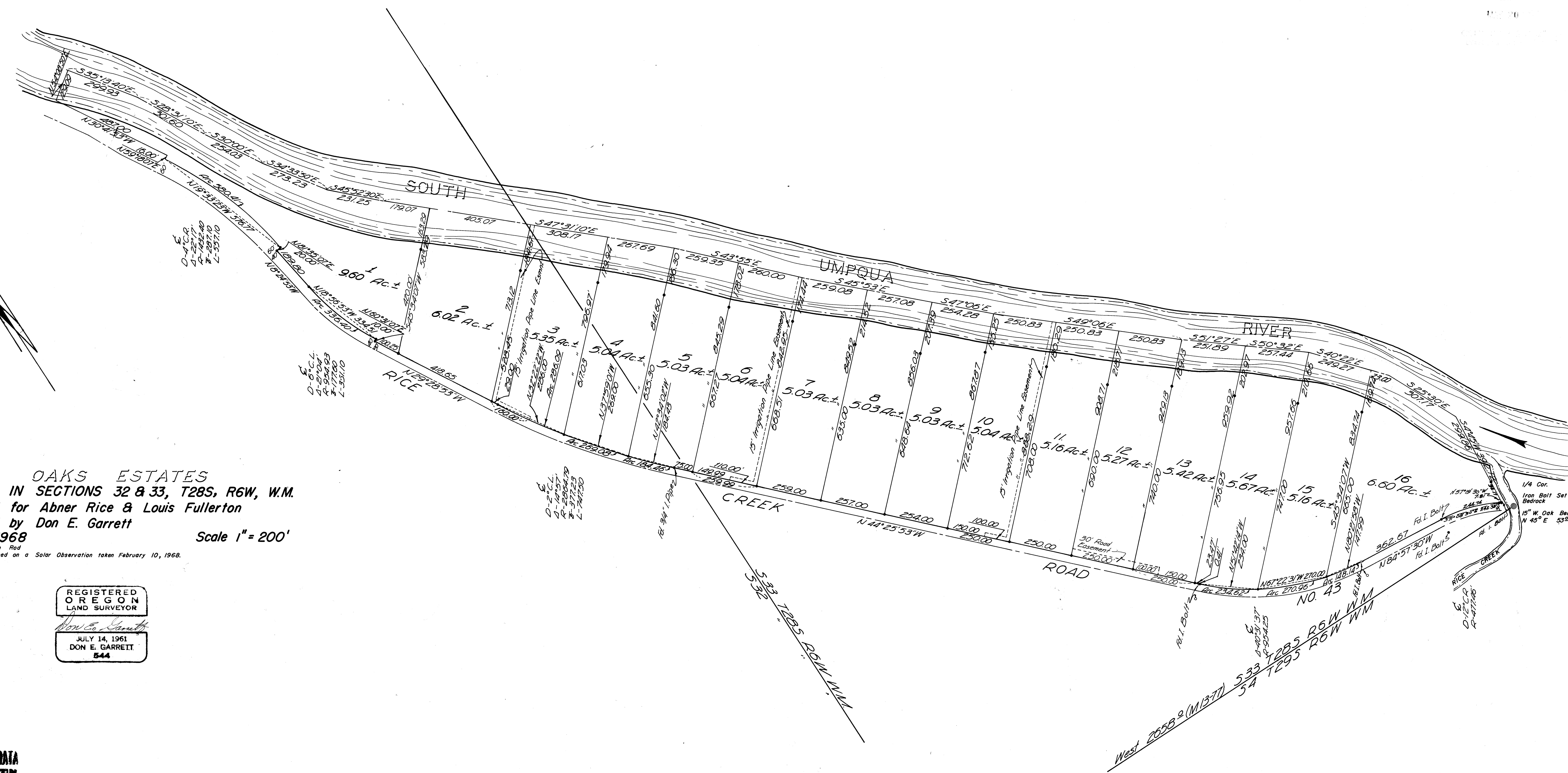


Handwritten initials



RIVER OAKS ESTATES
SURVEY IN SECTIONS 32 & 33, T28S, R6W, W.M.
 Surveyed for Abner Rice & Louis Fullerton
 Surveyed by Don E. Garrett
 March 1968
 Scale 1" = 200'

• Set 5/8" Iron Rod
 Bearings are based on a Solar Observation taken February 10, 1968.

REGISTERED
 OREGON
 LAND SURVEYOR

Don E. Garrett

JULY 14, 1961
 DON E. GARRETT
 544