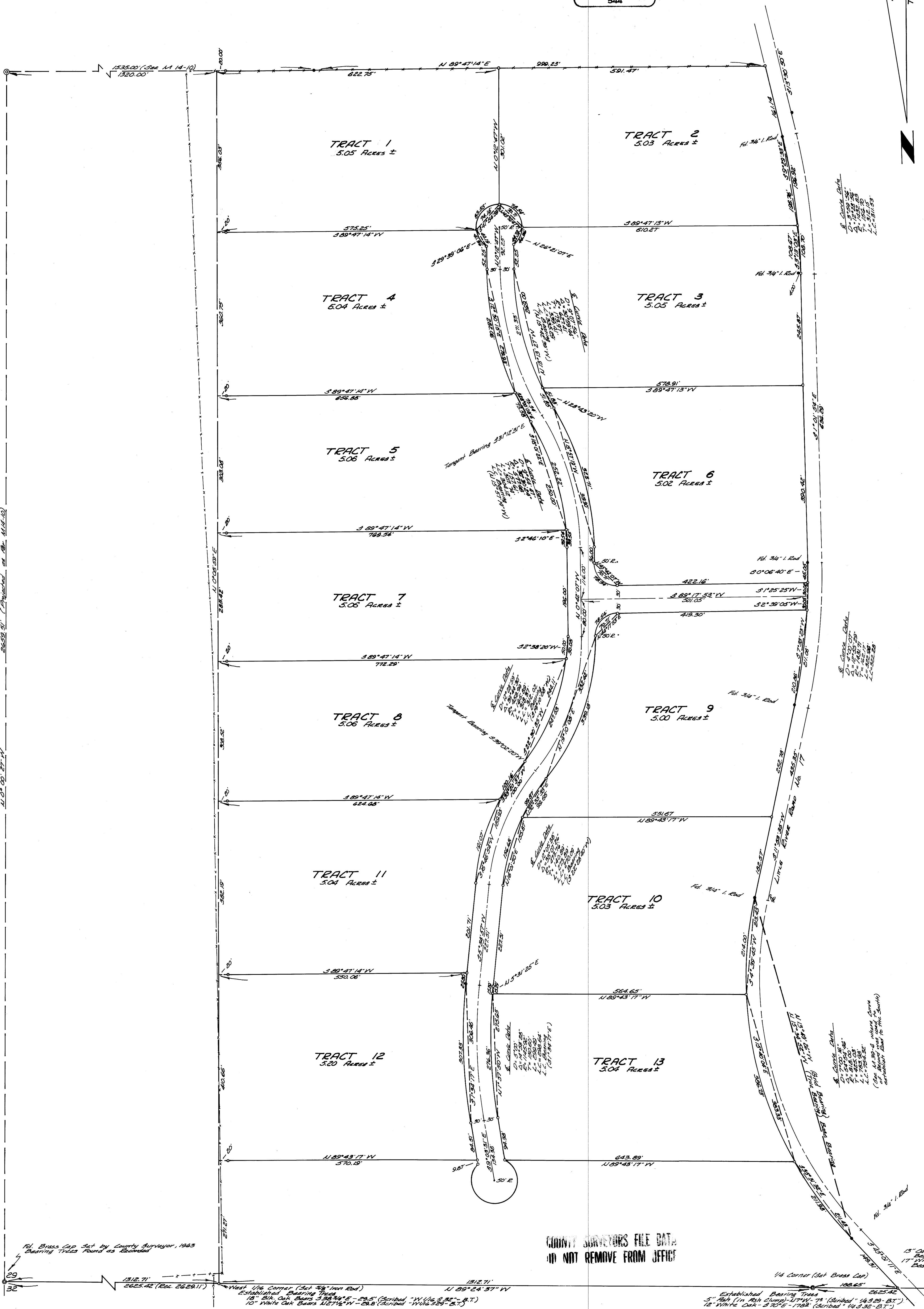
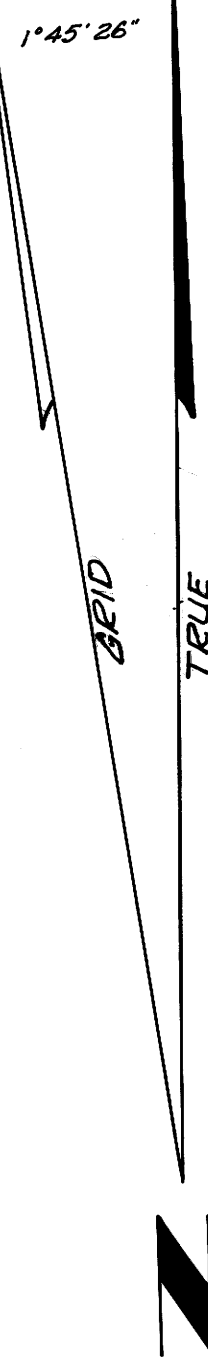


# SURVEY IN SECTION 29, T26S, R3W, W.M.

SURVEYED For R.A. STAUDLEY  
SURVEYED By DON E. GARRETT  
MARCH, 1970 SCALE: 1"=100'  
o - DENOTES SET 5/8" IRON ROD

REGISTERED  
OREGON  
LAND SURVEYOR  
Don E. Garrett  
JULY 14, 1961  
DON E. GARRETT  
544



2652.81' (Computed as AB, M14-10)

110° 00' 27" W

Fd. Brass Cap Set by County Surveyor, 1963  
Bearing Traces Found as Recorded

COUNTY SURVEYORS FILE DATA  
DO NOT REMOVE FROM OFFICE

1/4 Corner (Set Brass Cap)  
Established Bearing Traces  
5" Ash (in Ash Clump) - N 71° 16' 74" (Scribed "N 71° 16' 74" BT")  
12" White Oak - S 71° 16' 74" (Scribed "S 71° 16' 74" BT")

M 33-72

M 33-72