

# FIRST ADDITION TO RICE HILL ESTATES

COUNTY SURVEYORS FILE DATA  
DO NOT REMOVE FROM OFFICE

FILED  
RECORDED

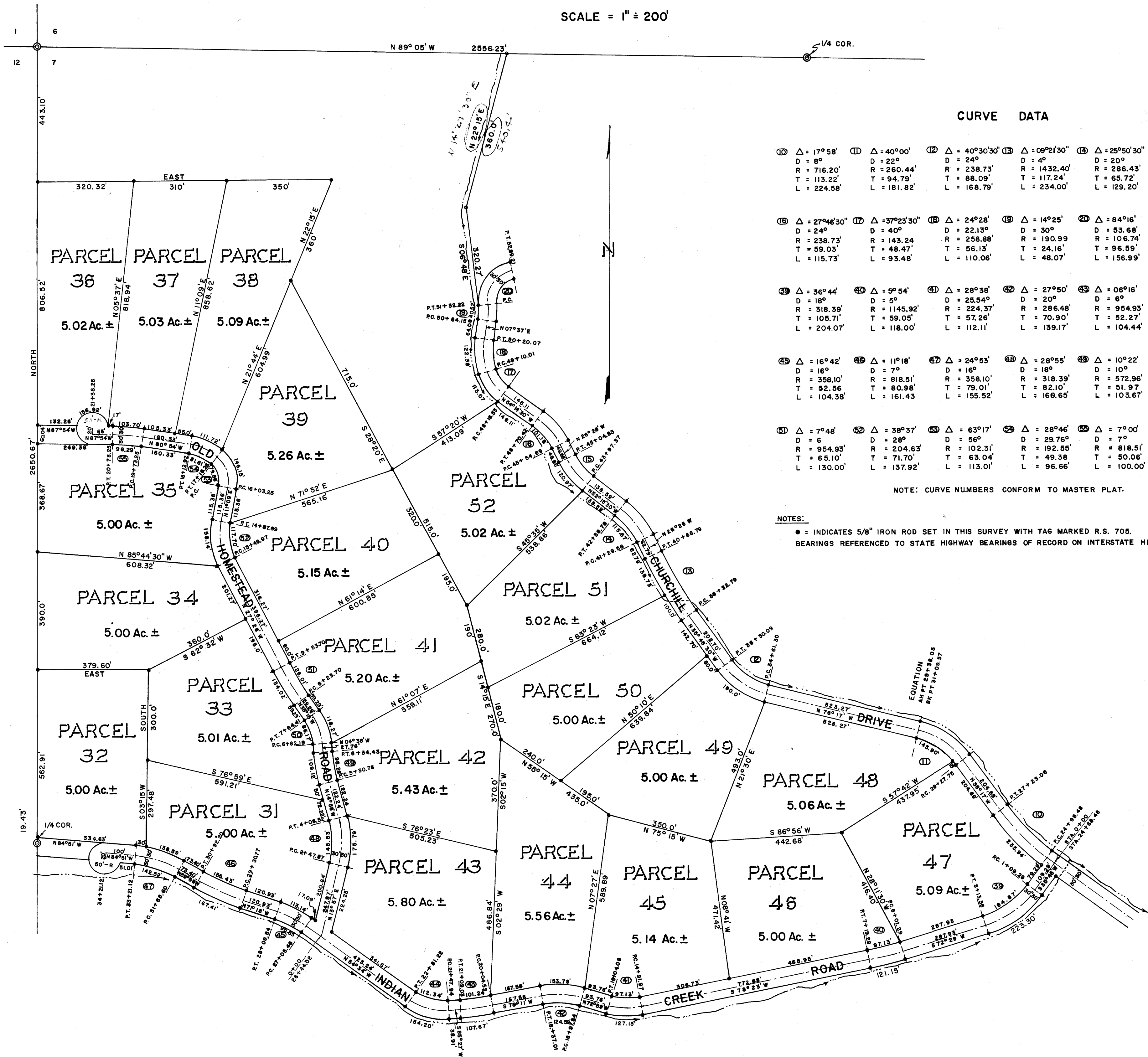
MAR 20 1977

COUNTY SURVEYOR  
DOUGLAS COUNTY, ORE.

OWNERS AND DEVELOPERS:  
D.M. WEBB AND JAMES R. DeBAUN

SITUATE IN SECTION 7, TOWNSHIP 24 SOUTH, RANGE 5 WEST, WILLAMETTE MERIDIAN, DOUGLAS COUNTY, OREGON

SCALE = 1" = 200'



### CURVE DATA

⑩ Δ = 17° 58' D = 8° R = 716.20' T = 113.22' L = 224.58'	⑪ Δ = 40° 00' D = 22° R = 260.44' T = 181.82' L = 181.82'	⑫ Δ = 40° 30' 30" D = 24° R = 238.73' T = 88.09' L = 168.79'	⑬ Δ = 09° 21' 30" D = 4° R = 1432.40' T = 117.24' L = 234.00'	⑭ Δ = 25° 50' 30" D = 20° R = 286.43' T = 65.72' L = 129.20'	⑮ Δ = 25° 47' 30" D = 24° R = 238.73' T = 54.66' L = 107.46'
⑯ Δ = 27° 46' 30" D = 24° R = 238.73' T = 59.03' L = 115.73'	⑰ Δ = 37° 23' 30" D = 40° R = 143.24' T = 48.47' L = 93.48'	⑱ Δ = 24° 28' D = 22.13° R = 258.88' T = 56.13' L = 110.06'	⑲ Δ = 14° 25' D = 30° R = 286.48' T = 24.16' L = 48.07'	⑳ Δ = 84° 16' D = 20° R = 53.68' T = 96.59' L = 156.99'	
㉑ Δ = 36° 44' D = 18° R = 318.39' T = 105.71' L = 204.07'	㉒ Δ = 5° 54' D = 5° R = 1145.92' T = 59.05' L = 118.00'	㉓ Δ = 28° 38' D = 25.54° R = 224.37' T = 57.26' L = 112.11'	㉔ Δ = 27° 50' D = 20° R = 286.48' T = 70.90' L = 139.17'	㉕ Δ = 06° 16' D = 6° R = 954.93' T = 52.27' L = 104.44'	㉖ Δ = 39° 59' D = 30° R = 190.99' T = 69.48' L = 133.28'
㉗ Δ = 16° 42' D = 16° R = 358.10' T = 52.56' L = 104.38'	㉘ Δ = 11° 18' D = 7° R = 818.51' T = 80.98' L = 161.43'	㉙ Δ = 24° 55' D = 16° R = 358.10' T = 79.01' L = 155.52'	㉚ Δ = 28° 55' D = 18° R = 318.39' T = 82.10' L = 169.65'	㉛ Δ = 10° 22' D = 10° R = 572.96' T = 51.97' L = 103.67'	㉜ Δ = 30° 40' D = 30° R = 190.99' T = 51.97' L = 102.22'
㉝ Δ = 7° 48' D = 6° R = 954.93' T = 65.10' L = 130.00'	㉞ Δ = 38° 37' D = 28° R = 204.63' T = 71.70' L = 137.92'	㉟ Δ = 63° 17' D = 56° R = 102.31' T = 63.04' L = 113.01'	㊱ Δ = 28° 46' D = 29.76° R = 192.55' T = 49.38' L = 96.66'	㊲ Δ = 7° 00' D = 7° R = 818.51' T = 50.06' L = 100.00'	

NOTE: CURVE NUMBERS CONFORM TO MASTER PLAT.

### NOTES:

- = INDICATES 5/8" IRON ROD SET IN THIS SURVEY WITH TAG MARKED R.S. 705.
- BEARINGS REFERENCED TO STATE HIGHWAY BEARINGS OF RECORD ON INTERSTATE HIGHWAY NO. 5.

COUNTY SURVEYORS FILE DATA  
DO NOT REMOVE FROM OFFICE

MAP FILE M.33-70

MAP FILE M.33-70