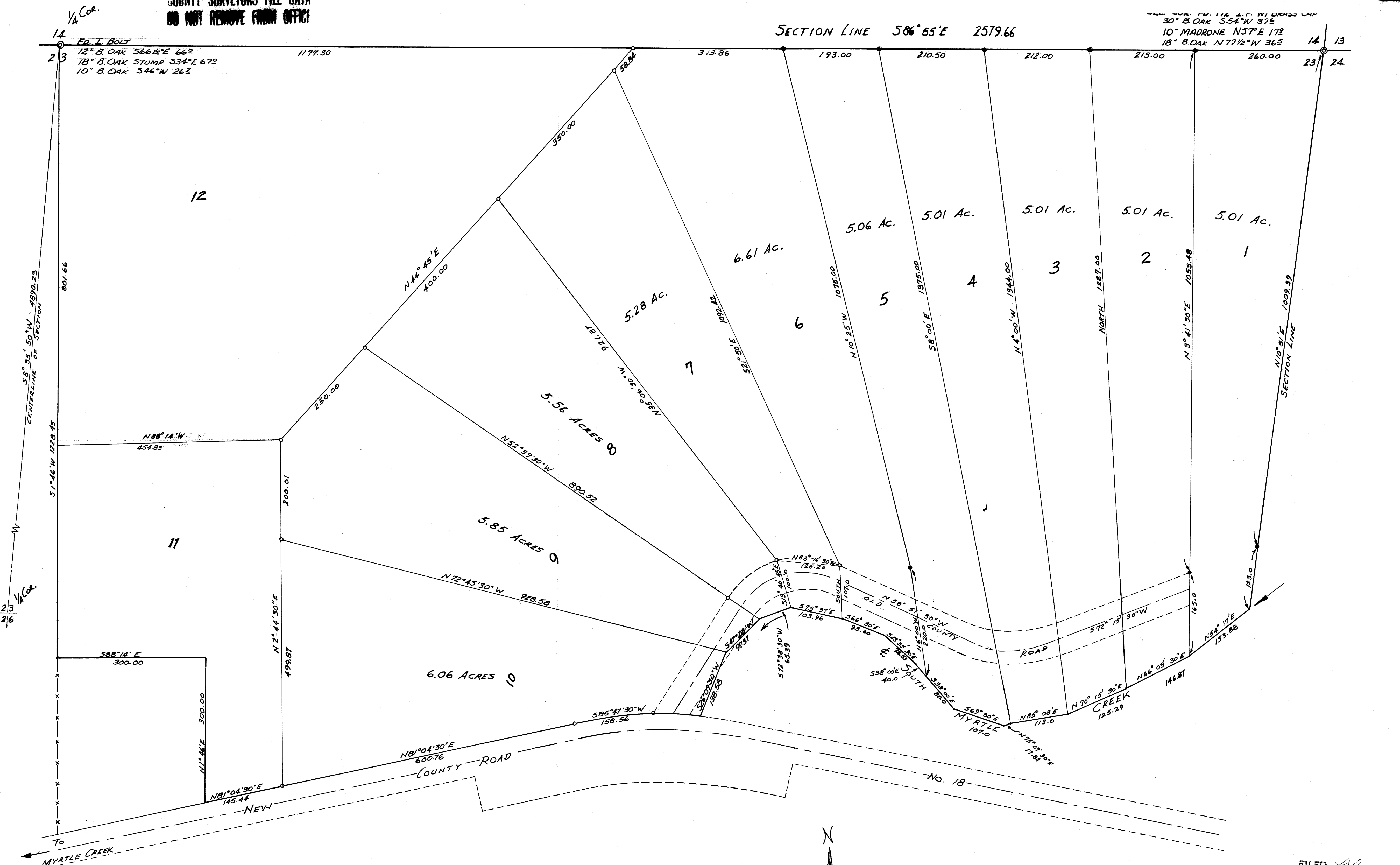


COUNTY SURVEYORS FILE DATA
DO NOT REMOVE FROM OFFICE

SECTION LINE S86°55'E 2579.66

30" B. OAK S54°W 37.9
10" MADRONE N37°E 17.2
18" B. OAK N77½°W 36.3



1/4 Cor.
1.4
2.3
58°33'50"W ~ 4890.23
CENTERLINE OF SECTION
801.66
51°46'W 1228.45
1/4 Cor.
2.3
2.6

FILED
RECEIVED
MAR 2 1970
COUNTY SURVEYOR
DOUGLAS COUNTY, ORE.

COUNTRY PROPERTIES
VILLAGE REALTY
MYRTLE CREEK, OREGON
SECTION 23 TWP. 29 SOUTH RGE. 4 WEST
W.M. DOUGLAS COUNTY, OREGON



COUNTY SURVEYORS FILE DATA
DO NOT REMOVE FROM OFFICE

SCALE: 1" = 100'
MARTIN ENGINEERING SERVICE ~ MYRTLE CREEK, OREGON

○ FOUND 5/8" IRON ROD
● SET 5/8" IRON ROD
NOTE: LOTS NO. 7 THROUGH 12 WERE PREVIOUSLY SURVEYED BY REGISTERED LAND SURVEYOR NO. 501 IN 1966.
BASIS OF BEARINGS: COUNTY ROAD NB2°53'E
GRID BEARING

AUGUST 1968

MAP FILE M33-65