

E9-EEW

COUNTY SURVEYORS FILE DATA
DO NOT REMOVE FROM OFFICE

SURVEY FOR DEED DESCRIPTION
IN SECTIONS 6 & 7, T29S, R5W, W.M.
DOUGLAS COUNTY, OREGON.

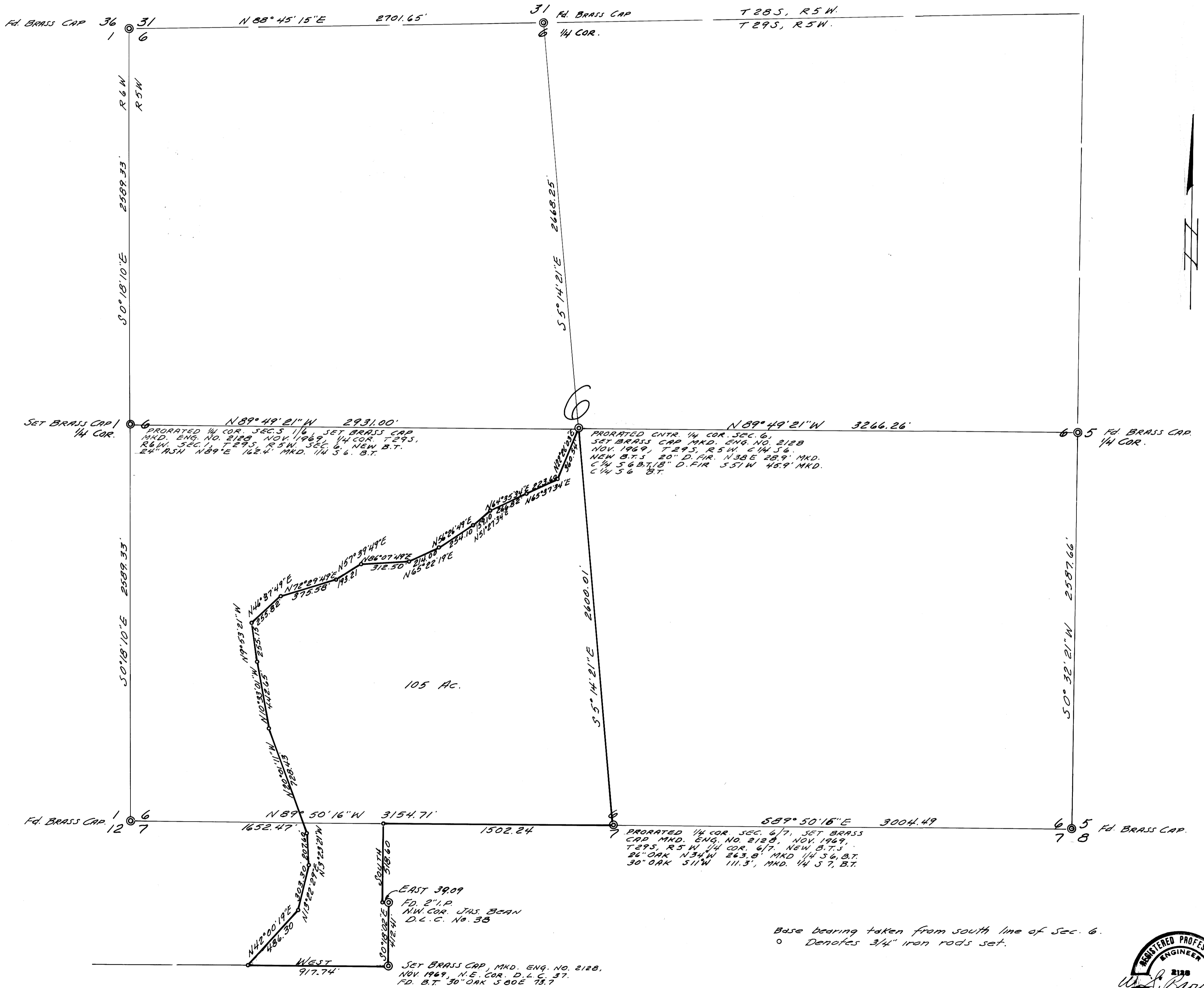
ENGINEER - W.S. BARNES
SURVEYED FOR - OTIS CLAYTON

NOV. 1969
SCALE 1"=400'

FILED *SB*
RECEIVED

JAN 5, 1970

COUNTY SURVEYOR
DOUGLAS COUNTY, ORE.



Base bearing taken from south line of Sec. 6.
o Denotes 3/4" iron rods set.

COUNTY SURVEYORS FILE DATA
DO NOT REMOVE FROM OFFICE

