

COUNTY SURVEYORS FILE DATA  
DO NOT REMOVE FROM OFFICE

# RESURVEY PLAT

SEC. 31 T.31S. R.6W.  
SEC. 1 T.32S. R.7W.

FILED  
RECEIVED

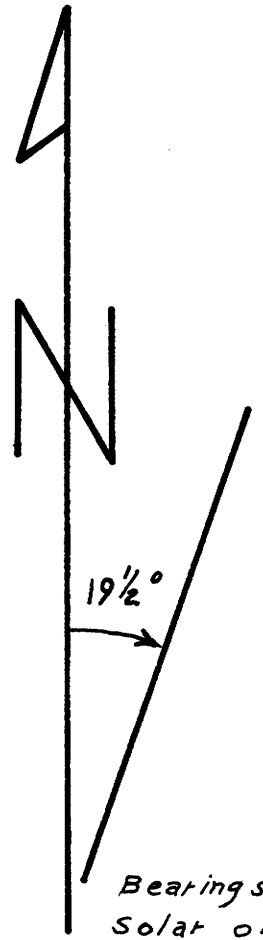
FEB 13 1969

COUNTY SURVEYOR  
DOUGLAS COUNTY, ORE.

SURVEYED For ROSEBURG LBR. CO.  
SURVEYED By H.W. JOHNSTONE

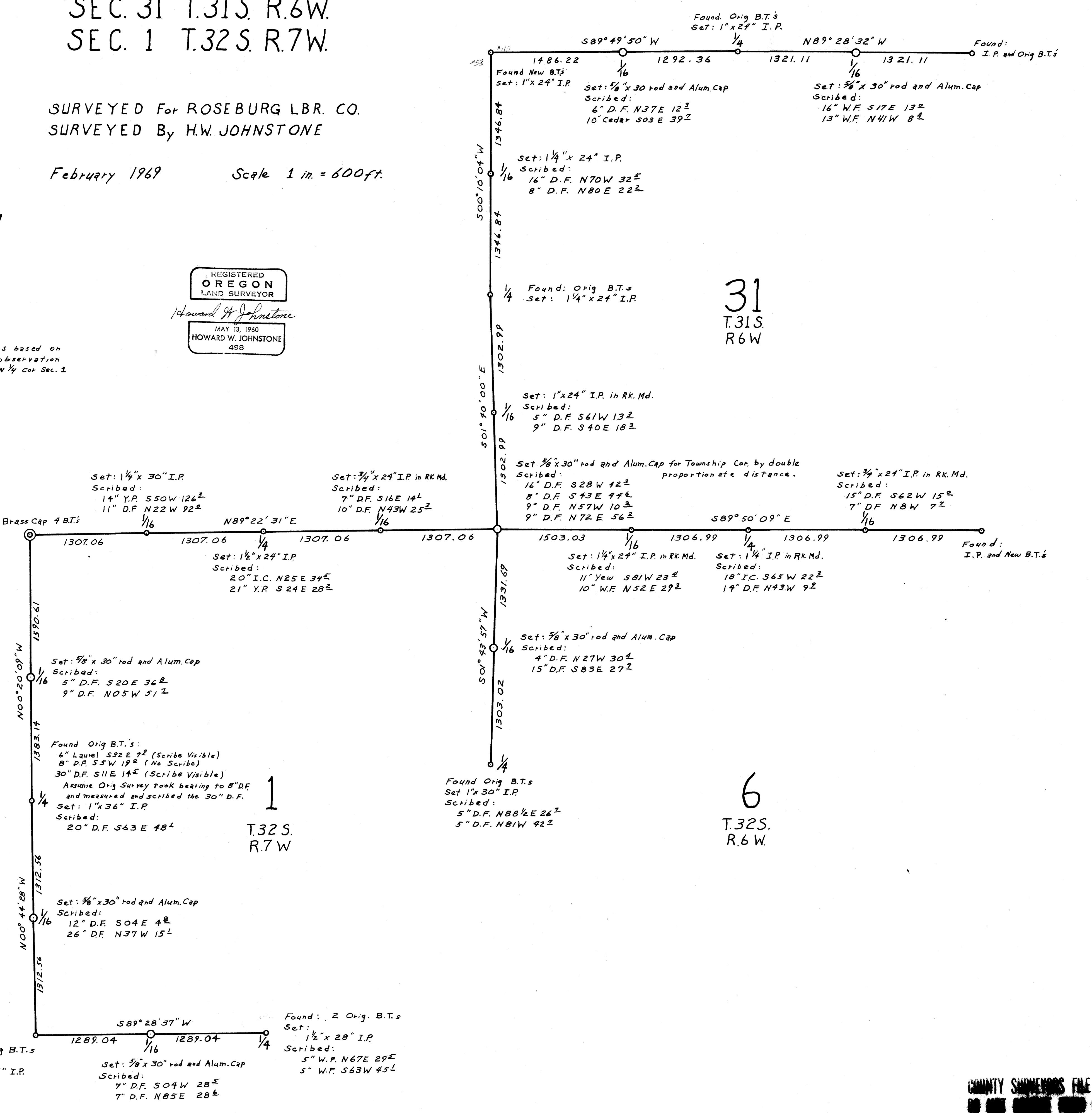
February 1969

Scale 1 in. = 600ft.



Bearings based on  
Solar observation  
at the N 1/4 Cor. Sec. 1

REGISTERED  
OREGON  
LAND SURVEYOR  
*Howard W. Johnstone*  
MAY 13, 1960  
HOWARD W. JOHNSTONE  
498



Found:  
4 Orig. B.T.s  
Set:  
1"x36" I.P.

Set: 5/8" x 30" rod and Alum. Cap  
Scribed:  
7" D.F. S04W 28<sup>±</sup>  
7" D.F. N85E 28<sup>±</sup>

Found: 2 Orig. B.T.s  
Set:  
1 1/2" x 28" I.P.  
Scribed:  
5" W.F. N67E 29<sup>±</sup>  
5" W.F. S63W 45<sup>±</sup>

Set: 1/4" x 30" I.P.  
Scribed:  
14" Y.P. S50W 126<sup>±</sup>  
11" D.F. N22W 92<sup>±</sup>

Set: 3/4" x 24" I.P. in Rk. Md.  
Scribed:  
7" D.F. S16E 14<sup>±</sup>  
10" D.F. N43W 25<sup>±</sup>

Set: 1/2" x 24" I.P.  
Scribed:  
20" I.C. N25E 34<sup>±</sup>  
21" Y.P. S24E 28<sup>±</sup>

Set: 1/4" x 24" I.P. in Rk. Md.  
Scribed:  
11" Yew S81W 23<sup>±</sup>  
10" W.F. N52E 29<sup>±</sup>

Set: 1/4" I.P. in Rk. Md.  
Scribed:  
18" I.C. S65W 22<sup>±</sup>  
14" D.F. N43W 9<sup>±</sup>

Set: 3/4" x 24" I.P. in Rk. Md.  
Scribed:  
15" D.F. S62W 15<sup>±</sup>  
7" D.F. N8W 7<sup>±</sup>

Set: 1" x 24" I.P. in Rk. Md.  
Scribed:  
5" D.F. S61W 13<sup>±</sup>  
9" D.F. S40E 18<sup>±</sup>

Set: 3/8" x 30" rod and Alum. Cap for Township Cor. by double  
proportionate distance.  
Scribed:  
16" D.F. S28W 42<sup>±</sup>  
8" D.F. S43E 44<sup>±</sup>  
9" D.F. N57W 10<sup>±</sup>  
9" D.F. N72E 56<sup>±</sup>

Set: 5/8" x 30" rod and Alum. Cap  
Scribed:  
4" D.F. N27W 30<sup>±</sup>  
15" D.F. S83E 27<sup>±</sup>

Found Orig. B.T.s  
Set 1" x 30" I.P.  
Scribed:  
5" D.F. N88 1/2 E 26<sup>±</sup>  
5" D.F. N81W 42<sup>±</sup>

Found. Orig. B.T.s  
Set: 1" x 24" I.P.  
Found: I.P. and Orig. B.T.s

Set: 5/8" x 30" rod and Alum. Cap  
Scribed:  
6" D.F. N37E 12<sup>±</sup>  
10" Cedar S03E 39<sup>±</sup>

Set: 5/8" x 30" rod and Alum. Cap  
Scribed:  
16" W.F. S17E 13<sup>±</sup>  
13" W.F. N41W 8<sup>±</sup>

Set: 1/4" x 24" I.P.  
Scribed:  
16" D.F. N70W 32<sup>±</sup>  
8" D.F. N80E 22<sup>±</sup>

Found: Orig. B.T.s  
Set: 1/4" x 24" I.P.

31  
T.31S.  
R.6W

1  
T.32S.  
R.7W

6  
T.32S.  
R.6W

COUNTY SURVEYORS FILE DATA  
DO NOT REMOVE FROM OFFICE