

20 21  
29 28 ft. T. iron 14 stump  
of orig. Corner Tree

North  
1198.7

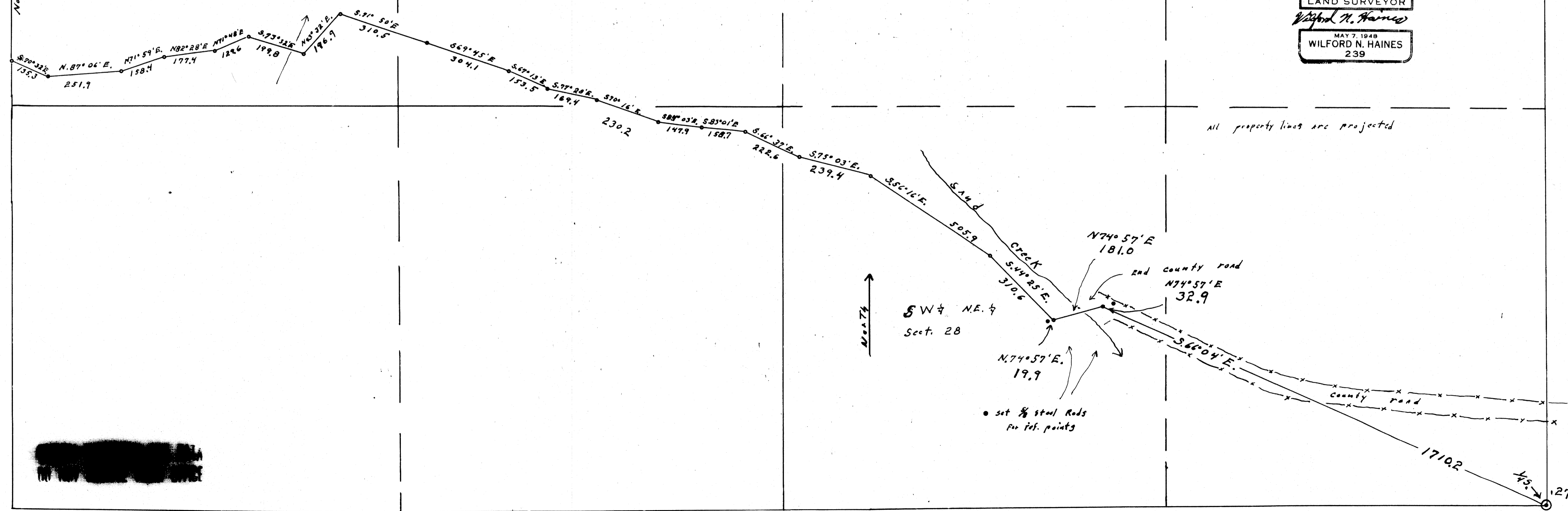
NW 1/4 NW 1/4  
sect. 28

NE 1/4 NW 1/4  
sect. 28

SURVEY FOR ROAD LOCATION  
Section 28, T.21S., R.5 W., W.M.  
Scale: 1" = 200' Nov. 29, 1968  
for  
John Woolley Drain, Oregon

REGISTERED  
OREGON  
LAND SURVEYOR  
Wilford N. Haines  
MAY 7, 1948  
WILFORD N. HAINES  
239

DEC 16  
COUNTY CLERK FOR  
INDIAN COUNTY, OREGON



All property lines are projected

North

SW 1/4 NE 1/4  
Sect. 28

• set 3/8 steel Rods  
for ref. points

28