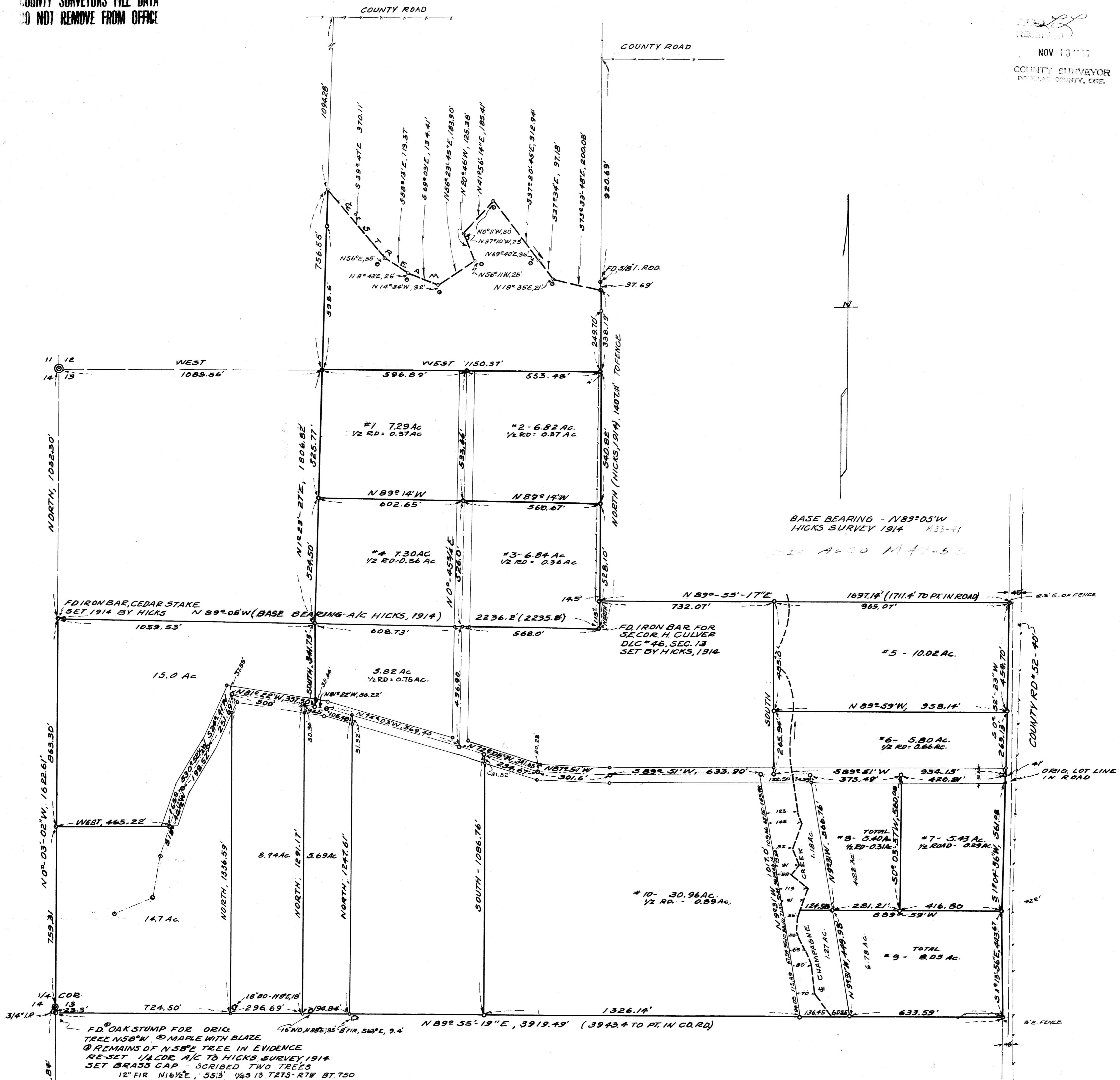


COUNTY SURVEYORS FILE DATA
DO NOT REMOVE FROM OFFICE

RECEIVED
NOV 13 1968
COUNTY SURVEYOR
DOUGLAS COUNTY, ORE.

MAP FILE M.33-744



BASE BEARING - N89°05'W
HICKS SURVEY 1914 M33-41

ALSO N47-52

FD OAK STUMP FOR ORIG. TREE N58°W @ MAPLE WITH BLAZE
REMAINS OF N58°E TREE IN EVIDENCE
RE-SET 1/4 COR. A/C TO HICKS SURVEY 1914
SET BRASS CAP - SCRIBED TWO TREES
12" FIR N16 1/2°E, 55.3' 1/4S 13 T27S-R7W BT 750
8" WO S32 3/4°E 39.7' 1/4S 13 T27S-R7W BT 750

REGISTERED
OREGON
LAND SURVEYOR
Herbert R. Northcraft
JULY 8, 1968
HERBERT L. NORTHCRAFT
750

- LEGEND
- & OF CHAMPAGNE CREEK
 - TRACTS EXTEND TO & OF ROAD
 - FENCE LINES
 - === ROADS 60' WIDE
 - o SET 3/4" I.P.

COUNTY SURVEYORS FILE DATA
DO NOT REMOVE FROM OFFICE

TRACTS IN SECTIONS 12 + 13
T27S; R7W; W.M.,
DOUGLAS COUNTY, ORE.
FOR HAROLD SHEPPARD +
ROY PHILLIPS
ROSEBURG, ORE.
SURVEY BY H.L. NORTHCRAFT
SCALE 1" = 200' SEP 1968

14 COR
23 24
T27S-R7W
W.M.
FD BRASS CAP FOR
WIT. COR. 10' SOUTH
OF COR.