

FILED  
RECEIVED

COUNTY SURVEYORS FILE DA  
DO NOT REMOVE FROM OFFICE

SEP 13 1968

COUNTY SURVEYOR  
DOUGLAS COUNTY, ORE.

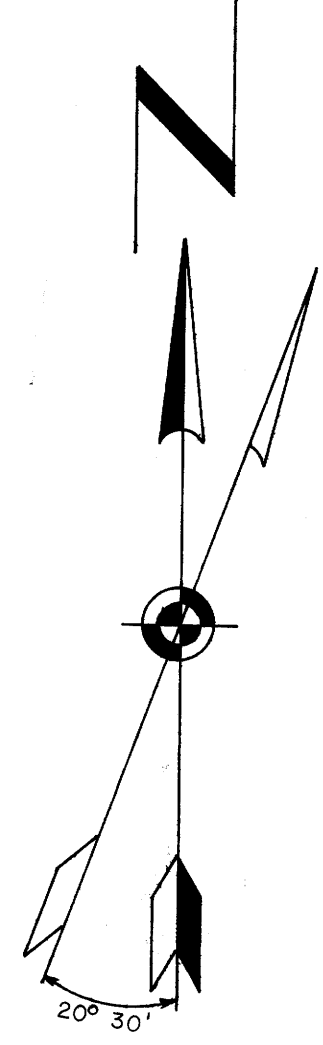
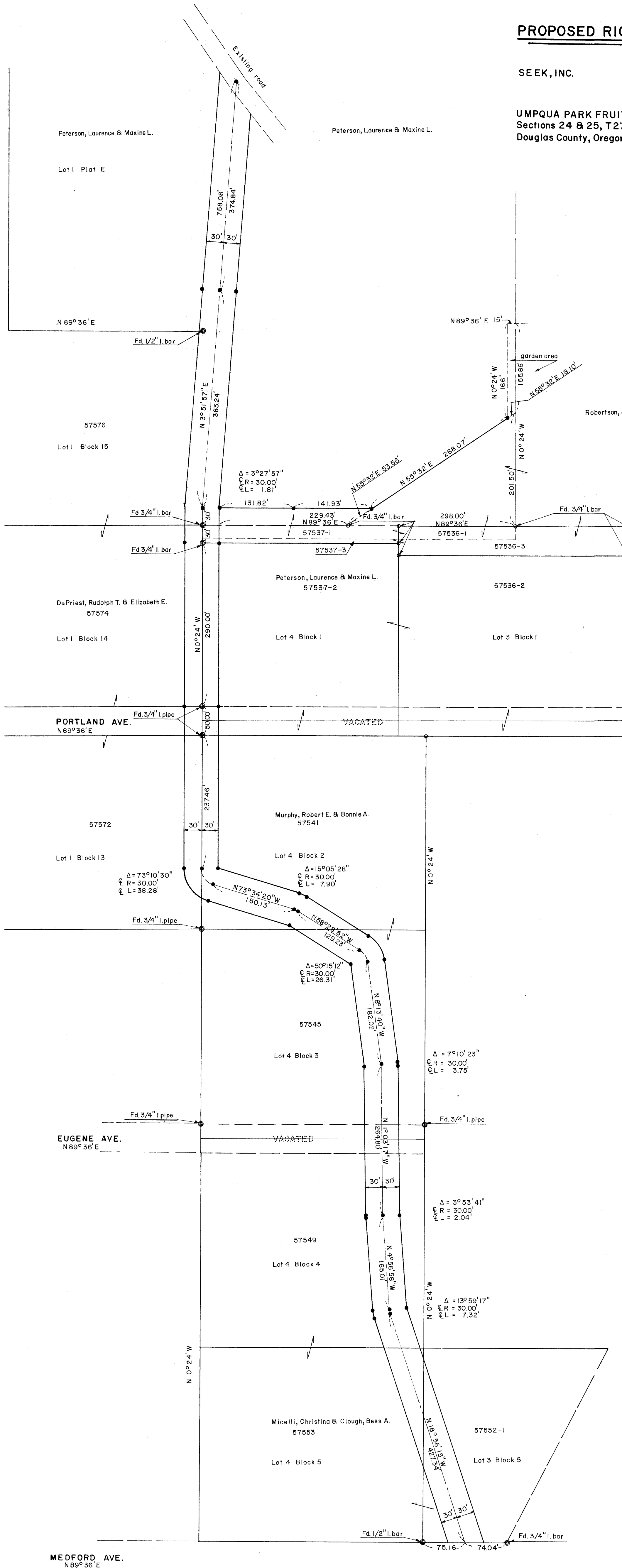
(C. R. # 353)

**PROPOSED RIGHT-OF-WAY FOR DEDICATION**

SEEK, INC.

Sept. 13, 1968

UMPQUA PARK FRUITLANDS, parts of PLATS 'D' & 'E'.  
Sections 24 & 25, T27S, R6W, W.M.  
Douglas County, Oregon



Scale: 1" = 100'  
 • = 5/8" iron bar set  
 Bearings based on Umpqua Park, Plat 'D'  
 Douglas County Surveyor's File M14-13

REGISTERED  
 OREGON  
 LAND SURVEYOR  
*William C. Stiles*  
 OCT. 4, 1957  
 WILLIAM C. STILES  
 432

COUNTY SURVEYORS FILE DA  
 DO NOT REMOVE FROM OFFICE

MAP FILE M. 13. P. 40