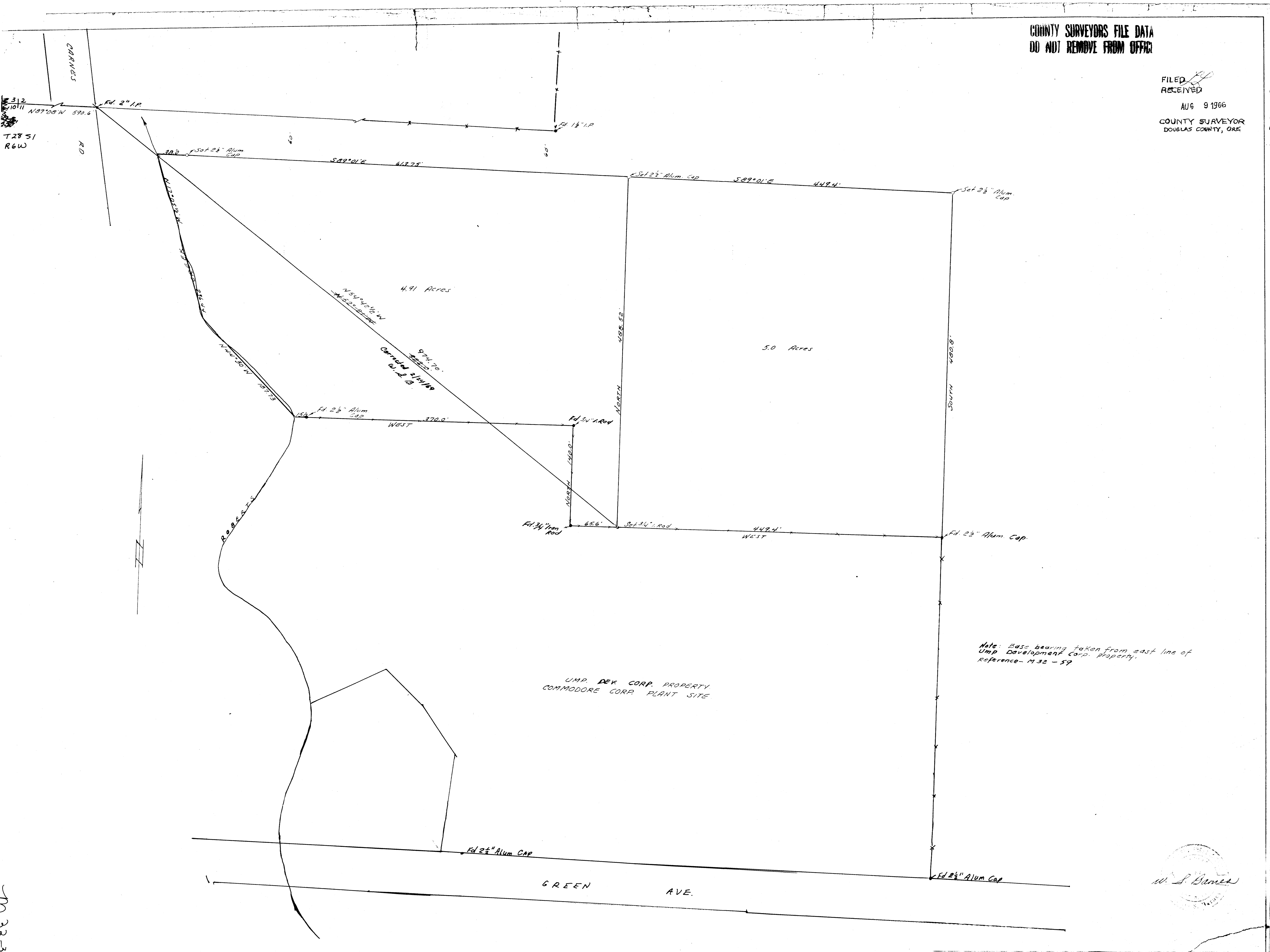


COUNTY SURVEYORS FILE DATA
DO NOT REMOVE FROM OFFICE

FILED
RECEIVED
AUG 9 1966
COUNTY SURVEYOR
DOUGLAS COUNTY, ORE

33-38

312
1011
T28 S1
R6W



Note: Base bearing taken from east line of Ump Development Corp. Property. Reference - M 32 - 59

U.M.P. DEK CORP. PROPERTY
COMMODORE CORP. PLANT SITE

W. S. Barnes

MAP OF SURVEY FOR DEED DESCRIPTION
IN SEC. 11, T. 28 S., R. 6 W. W. M.
DOUGLAS COUNTY, ORE.

SURVEYED FOR - UMPQUA DEVELOPMENT CORP.
SURVEYED BY - W. S. BARNES

JULY 1968

SCALE 1" = 60'

THIS COPY MADE FROM
A XEROX 2510
DATE July 31, 89

COUNTY SURVEYORS FILE DATA
DO NOT REMOVE FROM OFFICE