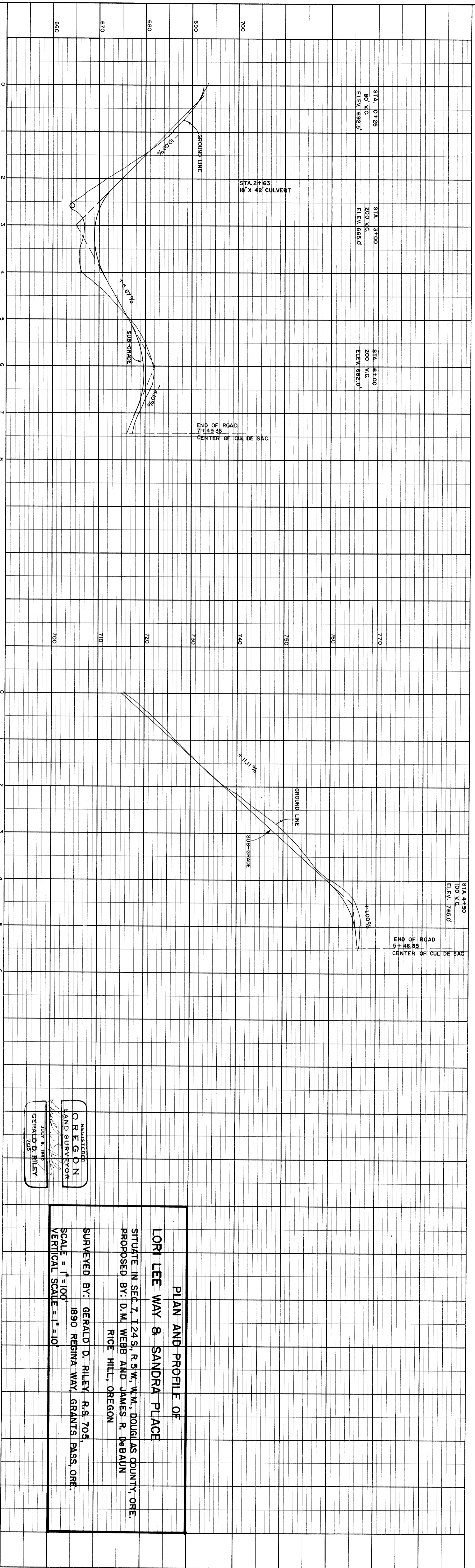


NOTES:
● INDICATES 5/8" X 3/8" IRON RODS SET IN THIS SURVEY WITH TAG MARKED R.S. 705.
BEARINGS REFERENCED TO STATE HIGHWAY BEARINGS
OF RECORD ON INTERSTATE HIGHWAY NO. 5.

FILED
MAY 14 1991
COUNTY SURVEYOR
DOUGLAS COUNTY, ORE.

| | | | |
|-----------|-----------------------------|----|------|
| PROFILE | SURVEYED | BY | DATE |
| NOTE BOOK | PLOTTED | | |
| NO. | GRADES CHECKED | | |
| | B. M. NOTED | | |
| | STRUCTURE NOTATIONS CHECKED | | |



PLAN AND PROFILE OF
LORI LEE WAY & SANDRA PLACE

SITUATE IN SEC. 7, T.24S., R.5W., W.M., DOUGLAS COUNTY, ORE.
PROPOSED BY: D.M. WEBB AND JAMES R. DEBAUN
RICE HILL, OREGON

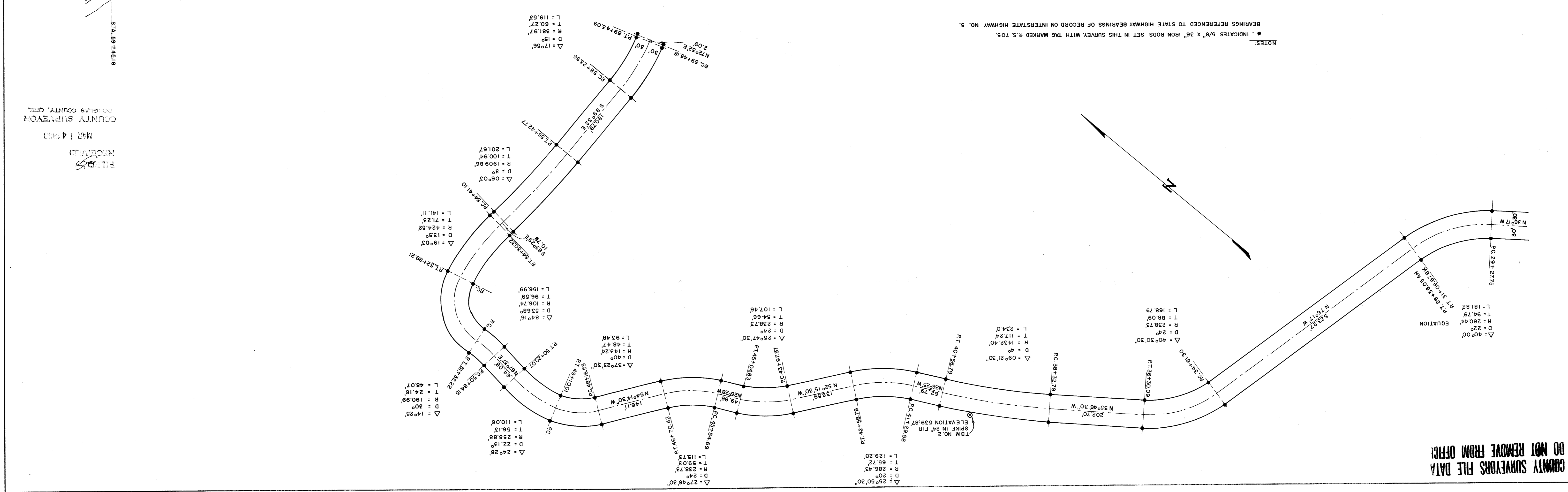
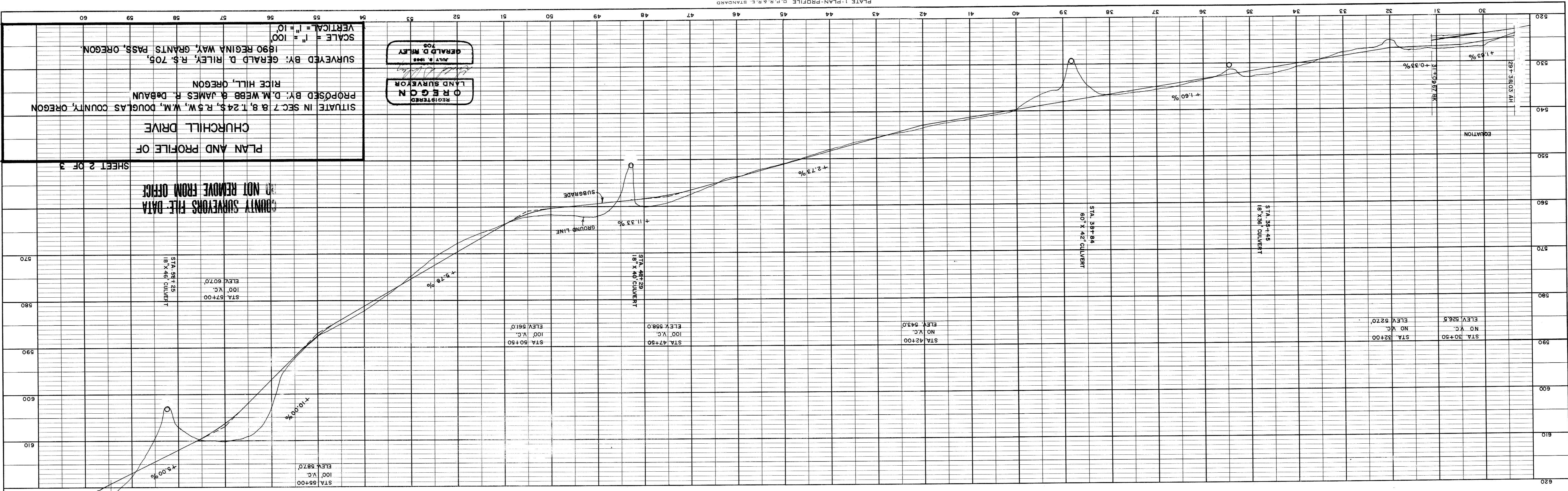
SURVEYED BY: GERALD D. RILEY, R.S. 705,
1890 REGINA WAY, GRANTS, PASS, ORE.

SCALE = 1" = 100'
VERTICAL SCALE = 1" = 10'

REGISTERED
LAND SURVEYOR
GERALD D. RILEY
JULY 8, 1985
R.S. 705

| | |
|----------------|-----------|
| DATE | |
| BY | |
| PROFILE | PRINTED |
| GRADES CHECKED | PLOTTED |
| NOTE BOOK | |
| NO. | |
| ENGINEER | NO. 10145 |
| NO. | |

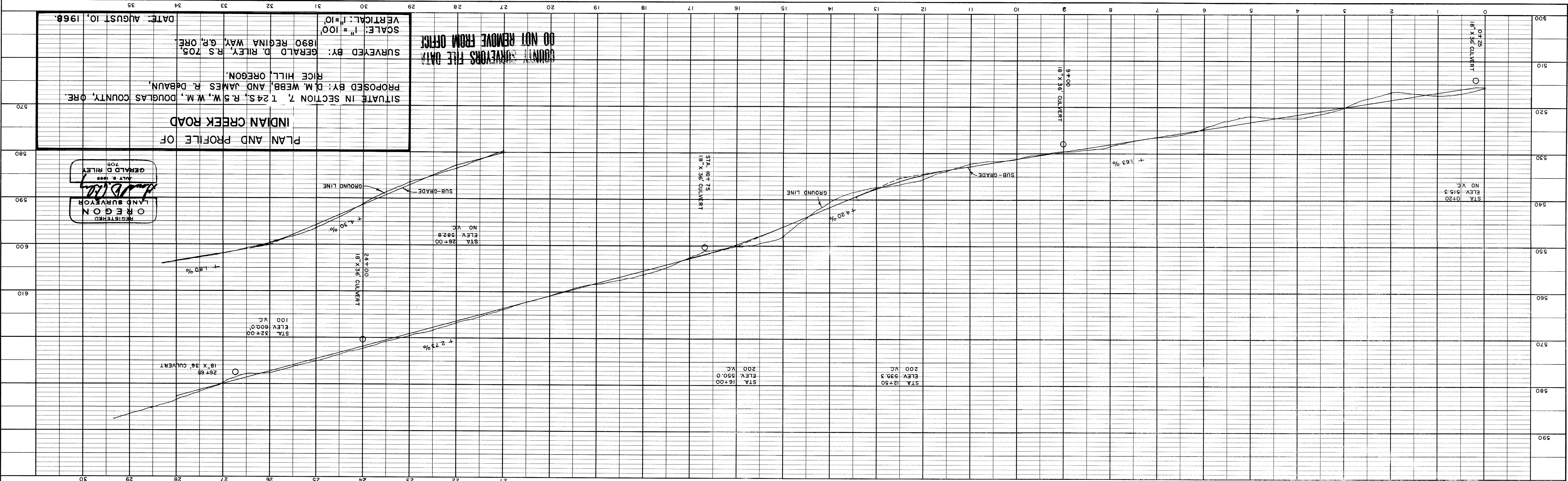
| | |
|----------------|-----------|
| DATE | |
| BY | |
| PLAN | PRINTED |
| GRADES CHECKED | PLOTTED |
| NOTE BOOK | |
| NO. | |
| ENGINEER | NO. 10145 |
| NO. | |



PLAN AND PROFILE OF
 CHURCHILL DRIVE
 SITUATE IN SEC. 7 & 8, T. 24 S., R. 5 W., W.M., DOUGLAS COUNTY, OREGON
 PROPOSED BY: D.M. WEBB & JAMES R. DEBAUN
 RICE HILL, OREGON
 SURVEYED BY: GERALD D. RILEY, R.S. 705,
 1890 REGINA WAY, GRANTS, OREGON.
 SCALE = 1" = 100'
 VERTICAL = 1" = 10'

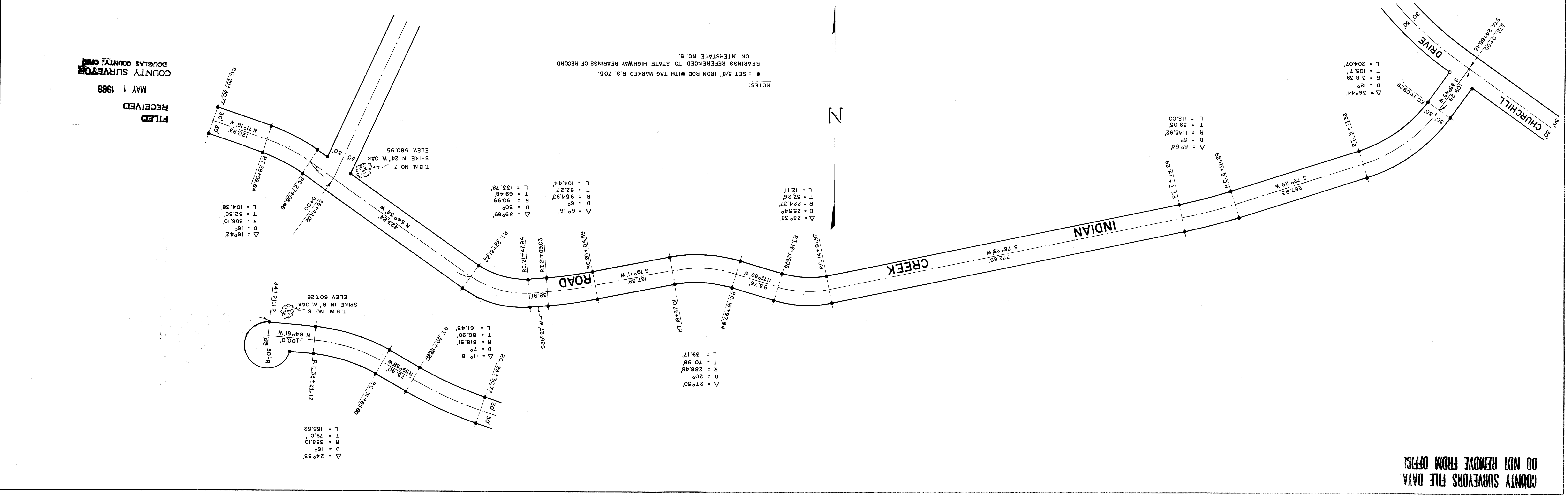
COUNTY SURVEYORS FILE DATA
 DO NOT REMOVE FROM OFFICE
 COUNTY SURVEYORS FILE DATA
 DO NOT REMOVE FROM OFFICE
 RICHARD D. HILB
 COUNTY SURVEYOR
 DOUGLAS COUNTY, ORE.
 MAR 14 1969

COUNTY SURVEYORS FILE DATA
 DO NOT REMOVE FROM OFFICE



PROFILE

| | |
|----------|--|
| DATE | |
| BY | |
| CHECKED | |
| APPROVED | |
| NOTED | |
| NO. | |

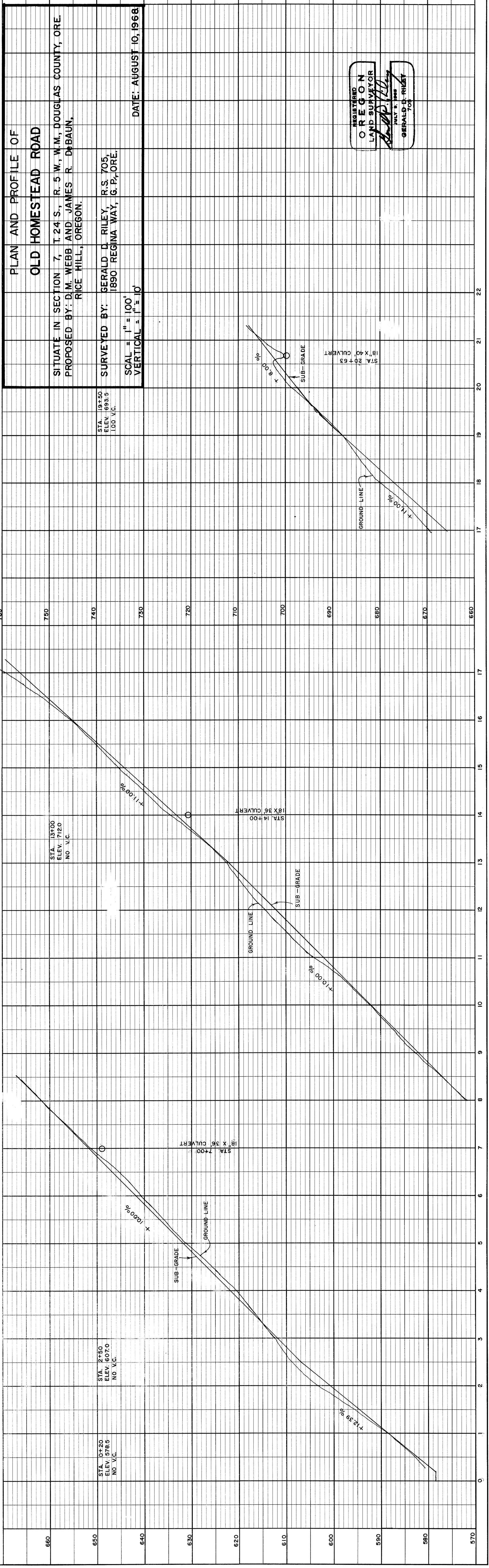
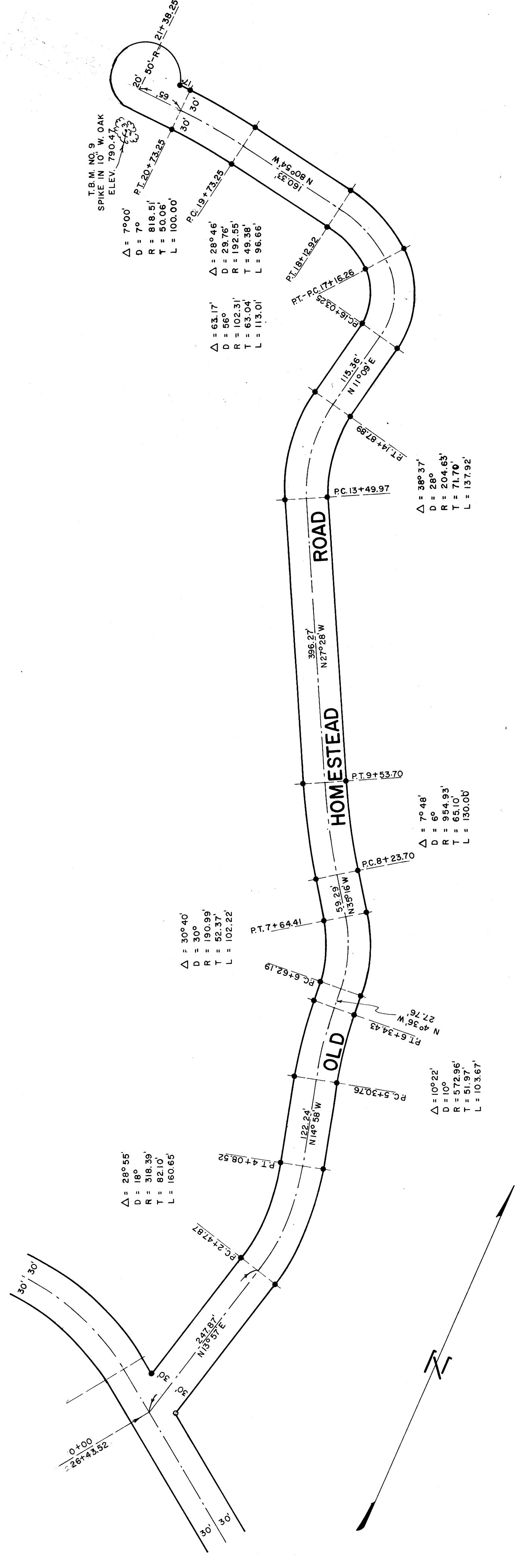


PLAN

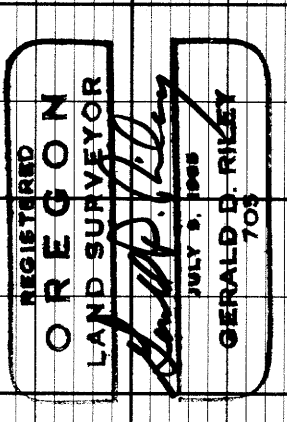
| | |
|----------|--|
| DATE | |
| BY | |
| CHECKED | |
| APPROVED | |
| NOTED | |
| NO. | |

COUNTY SURVEYORS FILE DATA
DO NOT REMOVE FROM OFFICE

FILED
RECEIVED
MAY 1 1968
COUNTY SURVEYOR
Douglas County, Ore.



PLAN AND PROFILE OF
OLD HOMESTEAD ROAD
SITUATE IN SECTION 7, T. 24 S., R. 5 W., W.M., DOUGLAS COUNTY, ORE.
PROPOSED BY: D.M. WEBB AND JAMES R. DEBAUN,
RICE HILL, OREGON.
SURVEYED BY: GERALD D. RILEY, R.S. 705,
1890 REGINA WAY, G. P., ORE.
SCALE = 1" = 100'
VERTICAL = 1" = 10'
DATE: AUGUST 10, 1968



| PLAN | |
|----------|------|
| SURVEYED | BY |
| NOTED | DATE |
| ALIGNED | |
| CHECKED | |
| BY | |
| DATE | |

| PROFILE | |
|-----------------|------|
| SURVEYED | BY |
| NOTED | DATE |
| GRADES CHECKED | |
| STRUCTURE NOTAS | |
| BY | |
| DATE | |

PLATE 1-PLAN-PROFILE D.P.R.E.E. STANDARD
100 643 PAPER COPIES PRINTED IN U. S. A.
DESIGNED BY GERALD D. RILEY

COUNTY SURVEYORS FILE DATA
DO NOT REMOVE FROM OFFICE

FILED 133-30F