

COUNTY SURVEYORS FILE DATA
DO NOT REMOVE FROM OFFICE

T' IRON
C.S. FILE # 51/109
MAP 22-71

BRASS CAP
MAP 22-71

N 87° 52' 40" W

1/4" I.P.
MAP 22-71

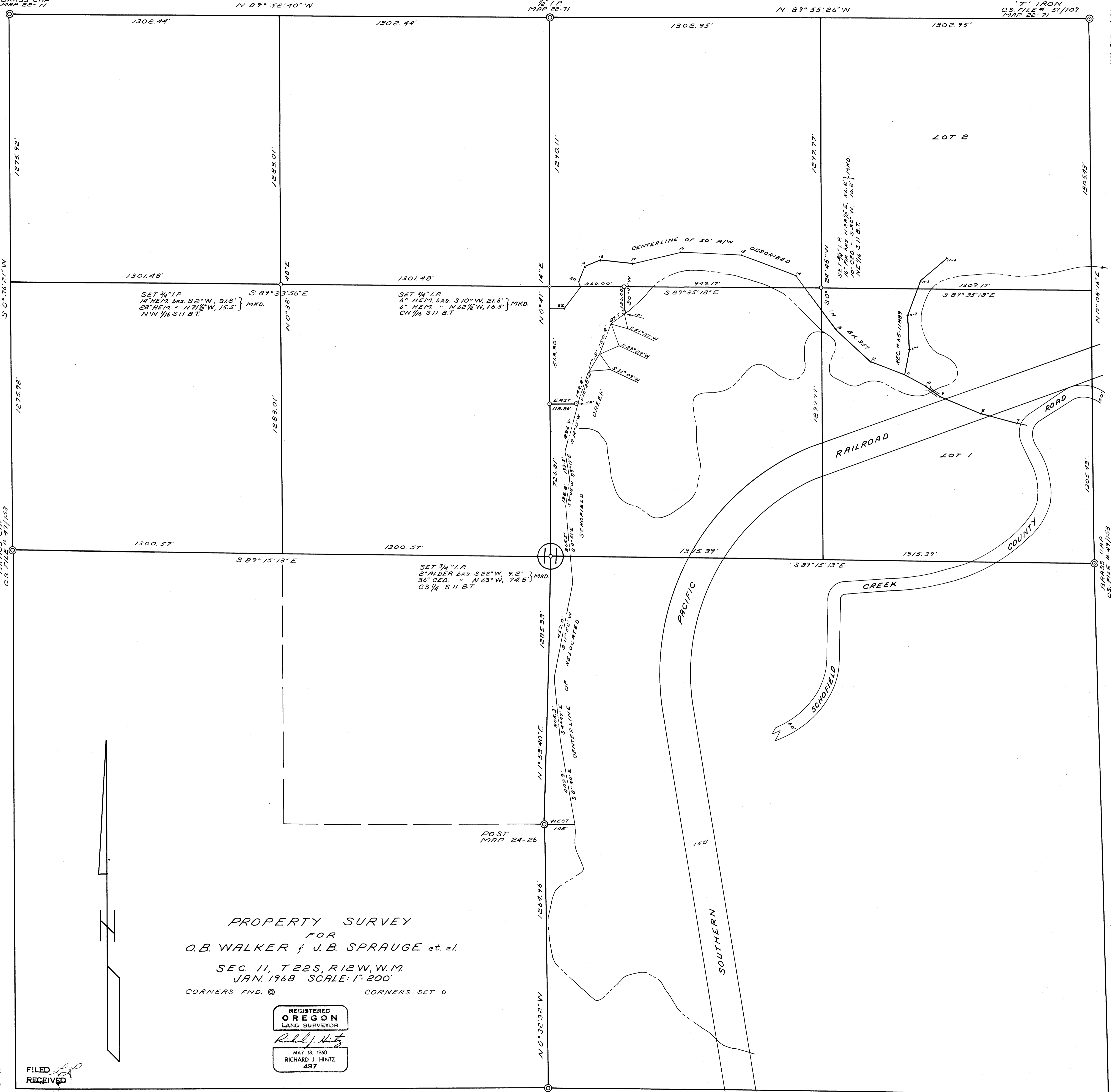
N 89° 55' 26" W

S 0° 36' 21" W

BRASS CAP
C.S. FILE # 47/153

MAP FILE # 337-22

BRASS CAP
C.S. FILE # 47/153



PROPERTY SURVEY
FOR
O.B. WALKER & J.B. SPRAUGE et. al.
SEC. 11, T. 22S, R. 12W, W.M.
JAN. 1968 SCALE: 1"=200'
CORNERS FND. © CORNERS SET 0

REGISTERED
OREGON
LAND SURVEYOR
Richard J. Hintz
MAY 13, 1960
RICHARD J. HINTZ
497

FILED
RECEIVED

FEB 7 1968

COUNTY SURVEYOR
DOUGLAS COUNTY, ORE.

COUNTY SURVEYORS FILE DATA
DO NOT REMOVE FROM OFFICE

3/4" I.P.
C.S. FILE # 42/305
MAP 24-26