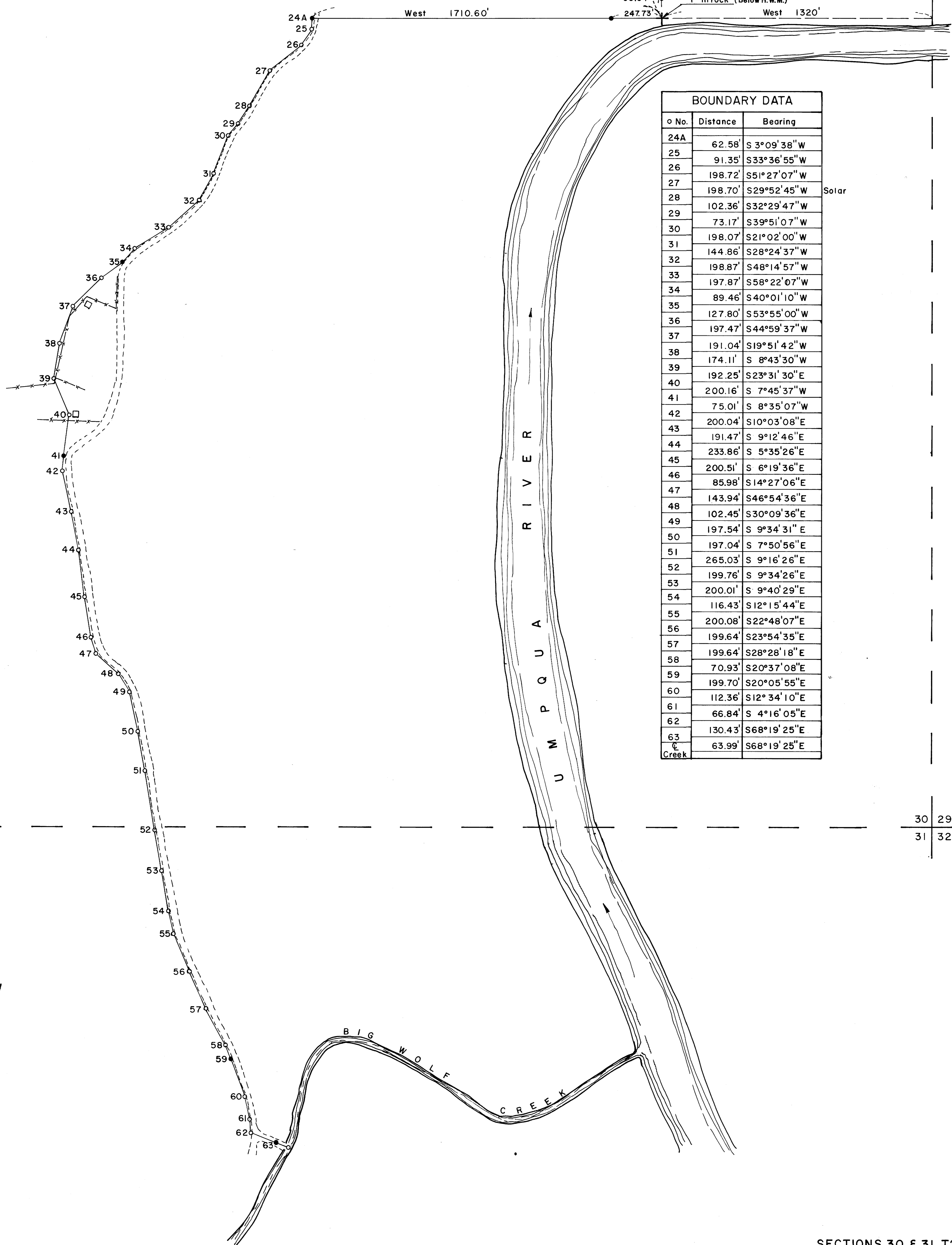


24 19  
25 30

19 20  
30 29



BOUNDARY DATA		
o No.	Distance	Bearing
24A	62.58'	S 3°09'38"W
25	91.35'	S33°36'55"W
26	198.72'	S51°27'07"W
27	198.70'	S29°52'45"W
28	102.36'	S32°29'47"W
29	73.17'	S39°51'07"W
30	198.07'	S21°02'00"W
31	144.86'	S28°24'37"W
32	198.87'	S48°14'57"W
33	197.87'	S58°22'07"W
34	89.46'	S40°01'10"W
35	127.80'	S53°55'00"W
36	197.47'	S44°59'37"W
37	191.04'	S19°51'42"W
38	174.11'	S 8°43'30"W
39	192.25'	S23°31'30"E
40	200.16'	S 7°45'37"W
41	75.01'	S 8°35'07"W
42	200.04'	S10°03'08"E
43	191.47'	S 9°12'46"E
44	233.86'	S 5°35'26"E
45	200.51'	S 6°19'36"E
46	85.98'	S14°27'06"E
47	143.94'	S46°54'36"E
48	102.45'	S30°09'36"E
49	197.54'	S 9°34'31"E
50	197.04'	S 7°50'56"E
51	265.03'	S 9°16'26"E
52	199.76'	S 9°34'26"E
53	200.01'	S 9°40'29"E
54	116.43'	S12°15'44"E
55	200.08'	S22°48'07"E
56	199.64'	S23°54'35"E
57	199.64'	S28°28'18"E
58	70.93'	S20°37'08"E
59	199.70'	S20°05'55"E
60	112.36'	S12°34'10"E
61	66.84'	S 4°16'05"E
62	130.43'	S68°19'25"E
63 Creek	63.99'	S68°19'25"E

25 30  
36 31

Found 2 1/2" Brass cap

30 29  
31 32

LEGEND

- Hub & tack
  - 3/4" x 3/6" rebar, set
- Bearings based on Solar observations.

Scale: 1" = 300'

FILED  
RECEIVED

AUG 14 1967

COUNTY SURVEYOR  
DOUGLAS COUNTY, ORE.

REGISTERED  
OREGON  
LAND SURVEYOR  
*William C. Stiles*  
OCT 4 1957  
WILLIAM C. STILES  
432

SECTIONS 30 & 31, T24S, R7W, W.M.  
DOUGLAS COUNTY, OREGON

PROPERTY LINE SURVEY  
FOR

**INTERNATIONAL PAPER COMPANY**  
LONG-BELL DIVISION  
GARDINER, OREGON

Surveyed August 12, 1967 by

**SEEK, INC.**

P.O. Box 375 Roseburg, Oregon 97470

MAP FILE M-33, P. 23