

SECT 13, T.22S. R.6W. & SECT. 10, T.22S R 5 W W.M.

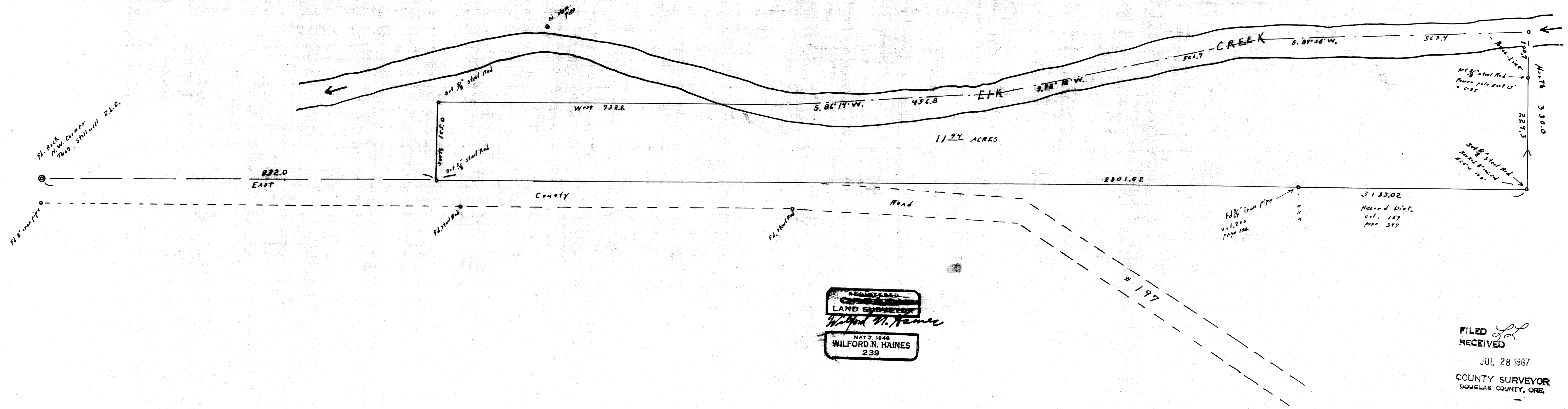
SURVEY FOR DEED DESCRIPTION

Scale: 1"=100'

July 1967

Roy T. GORE

Drain, Oregon



RECEIVED  
 LAND SURVEYOR  
 Wilford N. Haines  
 MAY 7 1948  
 WILFORD N. HAINES  
 239

FILED  
 RECEIVED  
 JUL 28 1967  
 COUNTY SURVEYOR  
 DOUGLAS COUNTY, ORE.