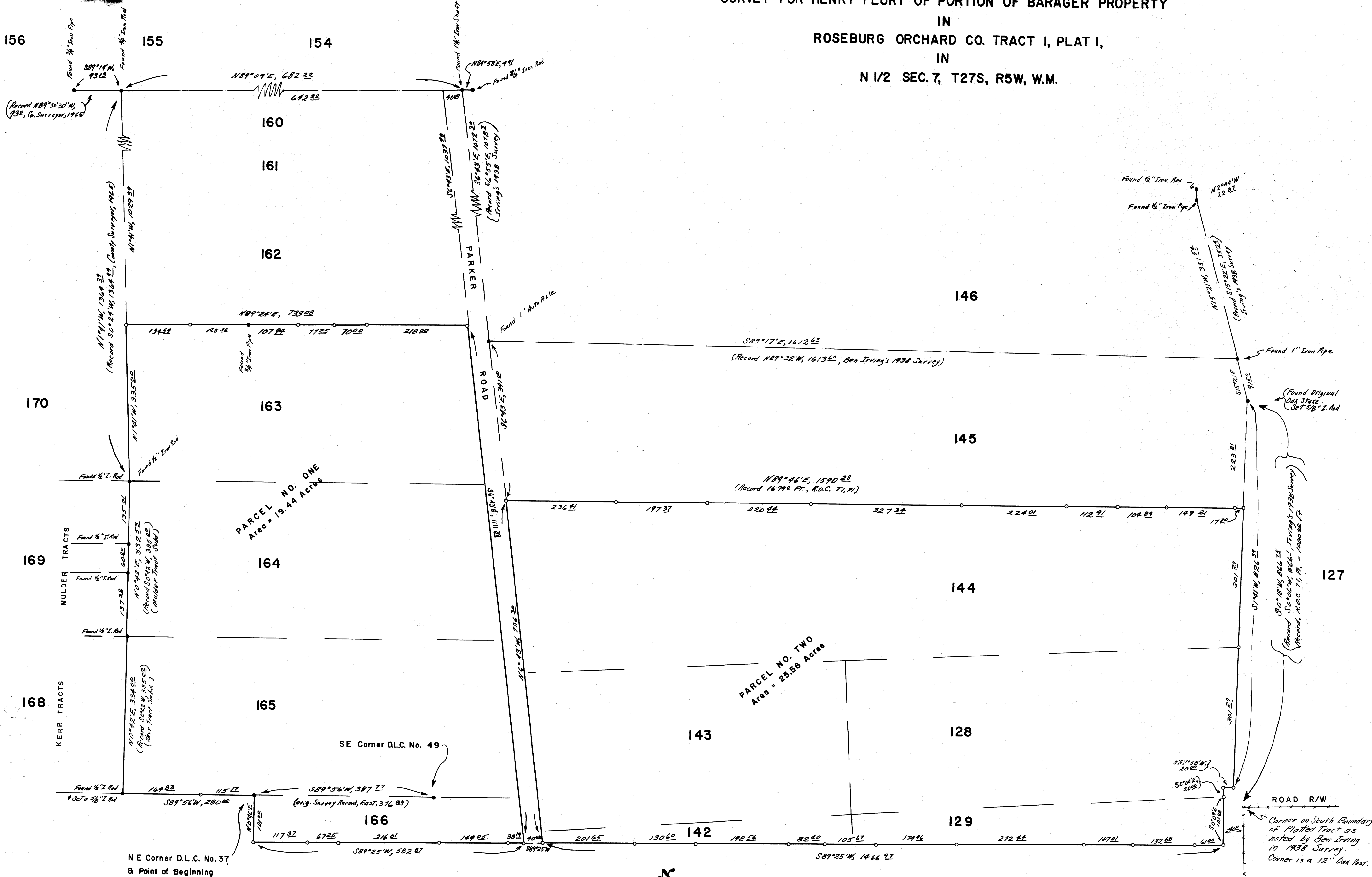


SURVEY FOR HENRY FLURY OF PORTION OF BARAGER PROPERTY  
 IN  
 ROSEBURG ORCHARD CO. TRACT I, PLAT I,  
 IN  
 N 1/2 SEC. 7, T27S, R5W, W.M.



PARCEL NO. ONE  
 Area = 19.44 Acres

PARCEL NO. TWO  
 Area = 25.56 Acres

NE Corner D.L.C. No. 37  
 Found 3/4" Iron Bolt, from which a:  
 18" W. Oak, possible original BT  
 with old face, bears S83°W, 43.2 ft.  
 (Original Record was 35.2 ft.)  
 18" Oak Stump, possible original BT,  
 bears North, 12.2 ft. to face.  
 12" W. Oak BT with recent face  
 bears S31 1/2°W, 33.2 ft.

SE Corner D.L.C. No. 49  
 Found 3/4" Iron Rod, from which a:  
 30" W. Oak BT with old scribes  
 visible bears S75°E, 25.1 ft.  
 24" W. Oak BT with old faces  
 bears S71 1/2°E, 109.2 ft.

LEGEND  
 ● Corner Found  
 ○ Corner Set (5/8" Iron Rod)

Scale: 1 inch = 100 feet

FILED RECEIVED

MAY 23 1966  
 COUNTY SURVEYOR  
 DOUGLAS COUNTY, ORE.



May 23, 1966