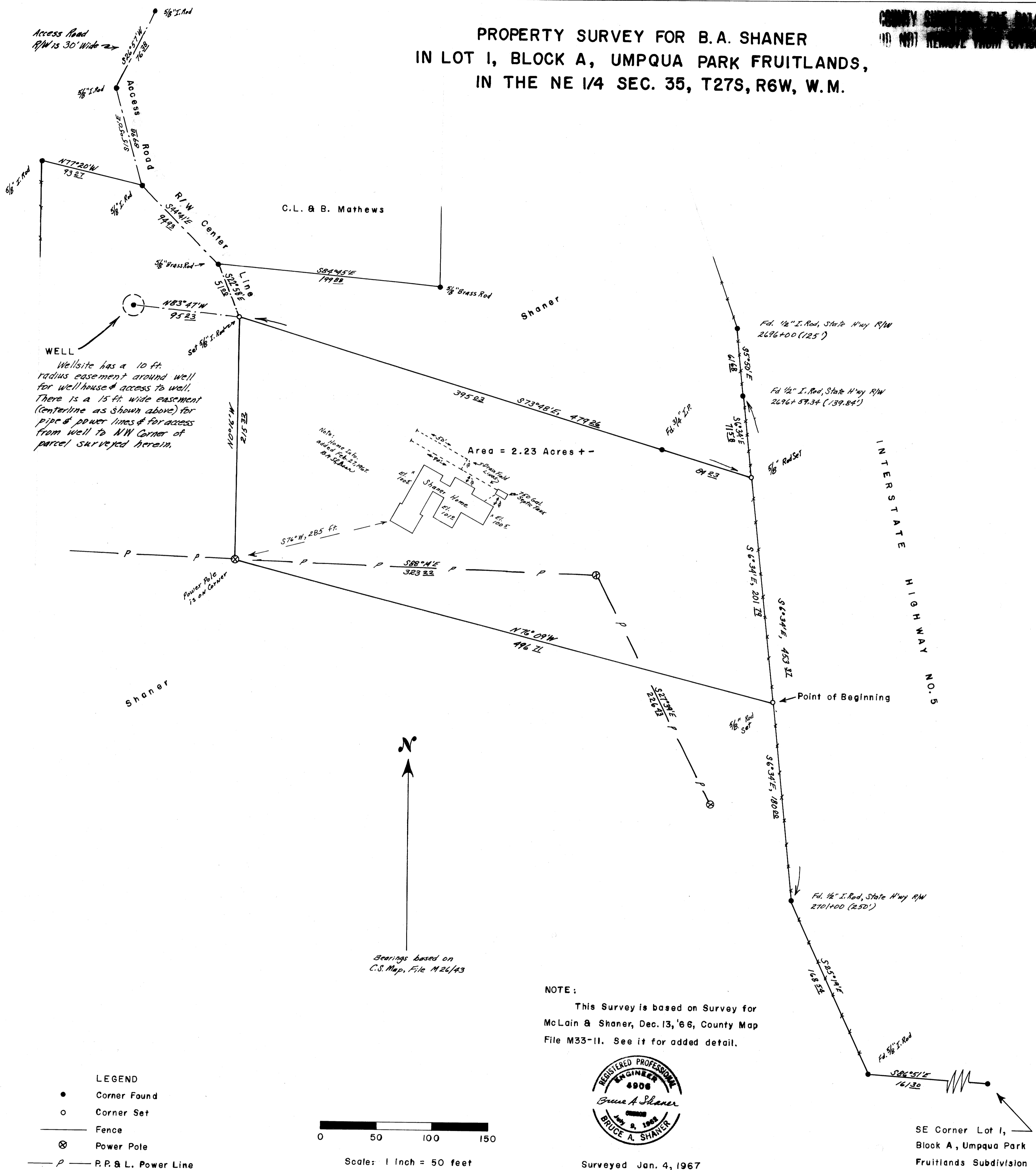


PROPERTY SURVEY FOR B.A. SHANER
 IN LOT I, BLOCK A, UMPQUA PARK FRUITLANDS,
 IN THE NE 1/4 SEC. 35, T27S, R6W, W.M.

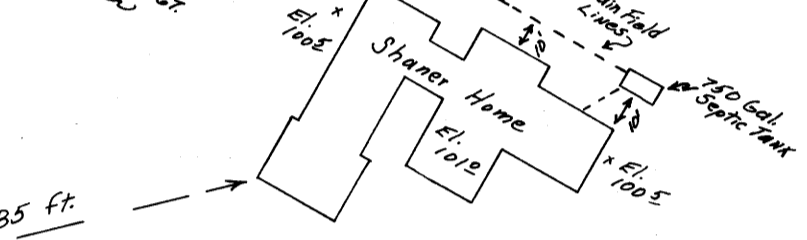
COUNTY SURVEYOR'S DATA
 (10) (11) REMOVE FROM FILE

MAP FILE M33-11



WELL
 Well site has a 10 ft radius easement around well for well house & access to well. There is a 15 ft wide easement (centerline as shown above) for pipe & power lines & for access from well to NW corner of parcel surveyed herein.

Area = 2.23 Acres +/-



Note: Home info added Feb. 21, 1967 by B.A. Shaner

NOTE:
 This Survey is based on Survey for McLain & Shaner, Dec. 13, '66, County Map File M33-11. See it for added detail.



Surveyed Jan. 4, 1967

SE Corner Lot I, Block A, Umpqua Park Fruitlands Subdivision

FILED
 RECEIVED
 JAN 4 1967
 COUNTY SURVEYOR
 DOUGLAS COUNTY, ORE.

COUNTY SURVEYOR'S DATA
 DO NOT REMOVE FROM FILE

MAP FILE M33-11