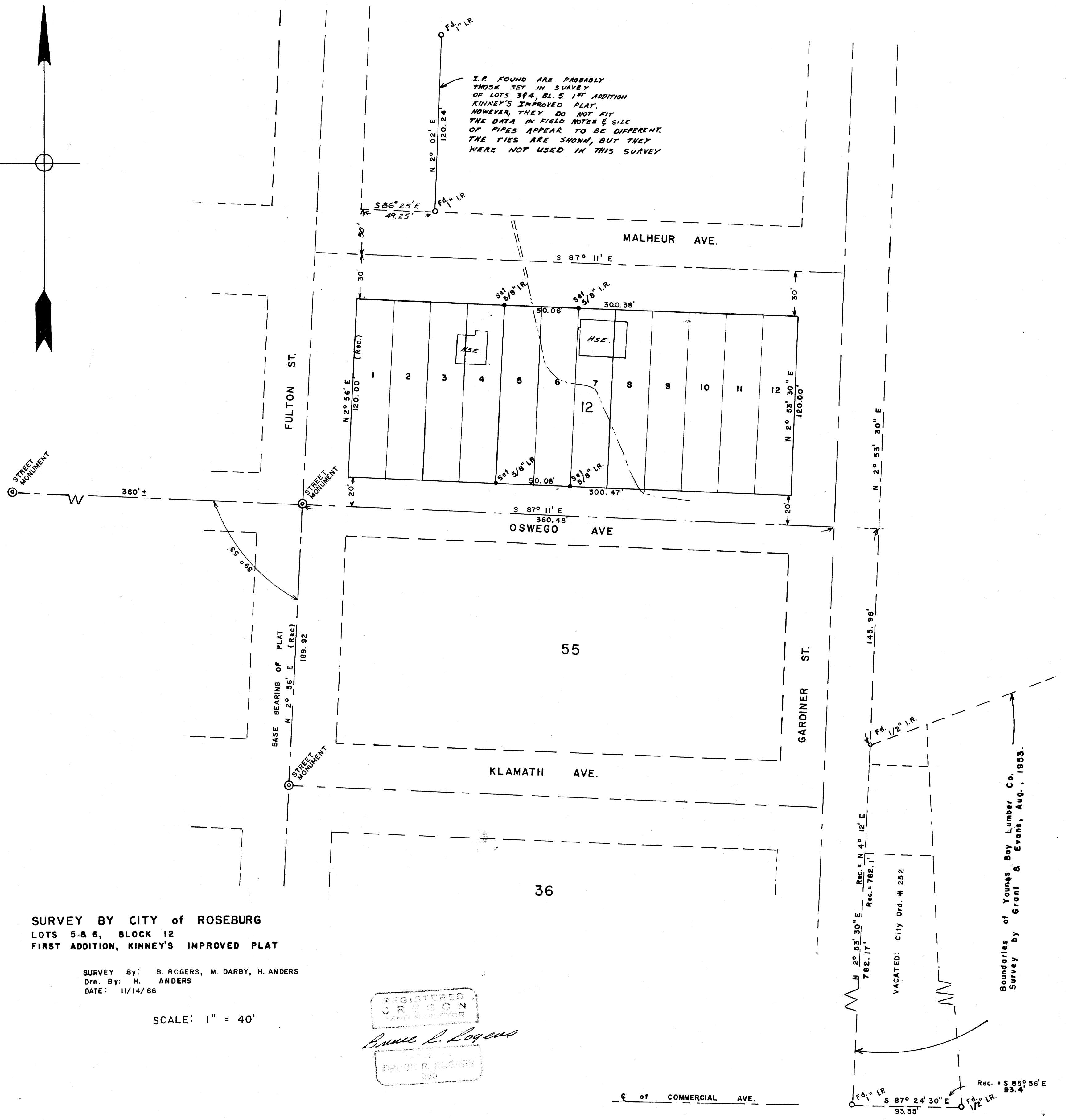
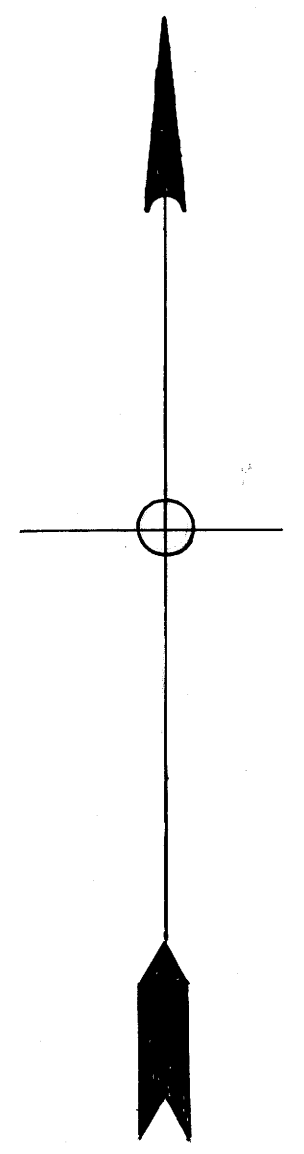


COUNTY SURVEYORS FILE DATA
DO NOT REMOVE FROM OFFICE



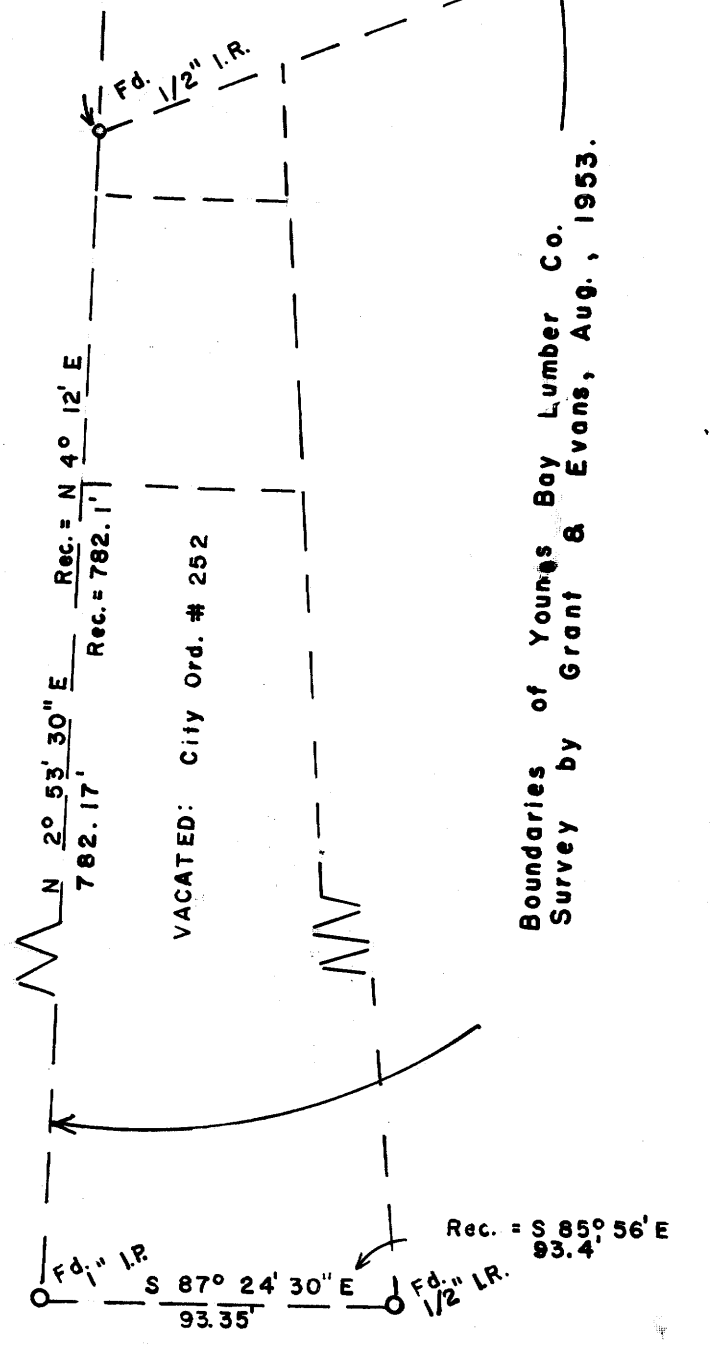
SURVEY BY CITY OF ROSEBURG
LOTS 5 & 6, BLOCK 12
FIRST ADDITION, KINNEY'S IMPROVED PLAT

SURVEY By: B. ROGERS, M. DARBY, H. ANDERS
Dwn. By: H. ANDERS
DATE: 11/14/66

SCALE: 1" = 40'

REGISTERED
OREGON
SURVEYOR
Bennie L. Logans
Bennie L. Logans
Bennie L. Logans
050

FILED
RECEIVED
NOV 13 1966
COUNTY SURVEYOR
DOUGLAS COUNTY, ORE.



COUNTY SURVEYORS FILE DATA
DO NOT REMOVE FROM OFFICE