

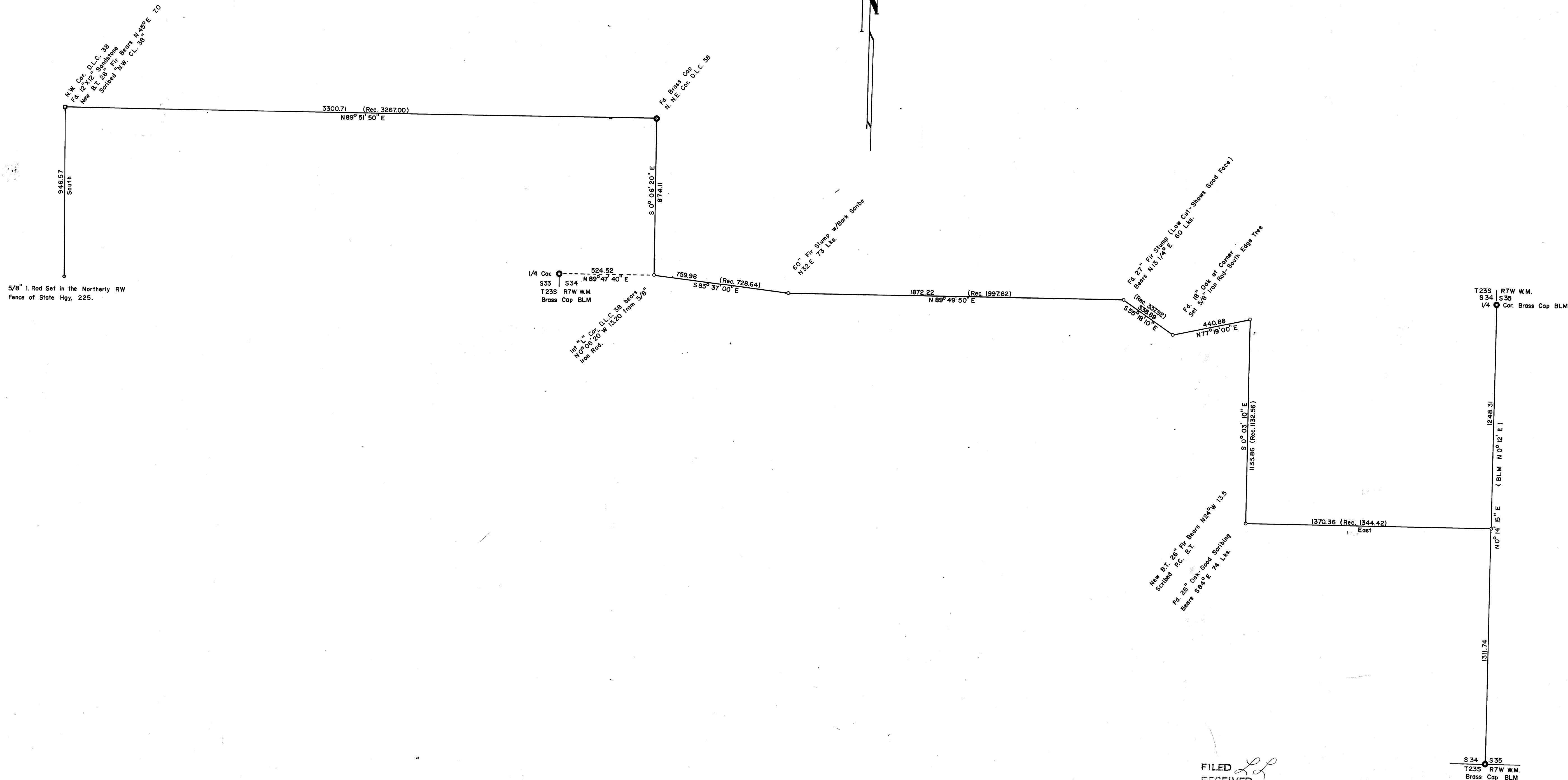
COUNTY SURVEYORS FILE DATA
DO NOT REMOVE FROM OFFICE

SURVEY IN SEC. 33 & 34 T23S R7W W.M.

Surveyed for the Pyle Bros.
Surveyed by Don E. Garrett
April 15, 1966
Scale 1" = 300'

BEARINGS ARE BASED ON A SOLAR OBSERVATION TAKEN MARCH 29, 1966.
FOR PROPERTY CORNERS FOUND SEE VOL. 2, PG. 171-172, C.S. RECORDS.
o - SET 5/8" I. ROD

REGISTERED
OREGON
LAND SURVEYOR
Don E. Garrett
JULY 14, 1961
DON E. GARRETT
544



FILED
RECEIVED

APR 20 1966
COUNTY SURVEYOR
DOUGLAS COUNTY, OREGON

COUNTY SURVEYORS FILE DATA
DO NOT REMOVE FROM OFFICE