

COUNTY SURVEYORS FILE DATA
DO NOT REMOVE FROM OFFICE

SURVEY FOR DEED DESCRIPTIONS
LOT 7, SEC. 19, T27S, R4W, W.M.
Surveyed for Ruth V. Bailey
Surveyed by Don E. Garrett
April 26, 1967
Scale 1" = 100'
•-Set 5/8" Iron Rod

FILED *LL*
RECEIVED

MAY 4 1967

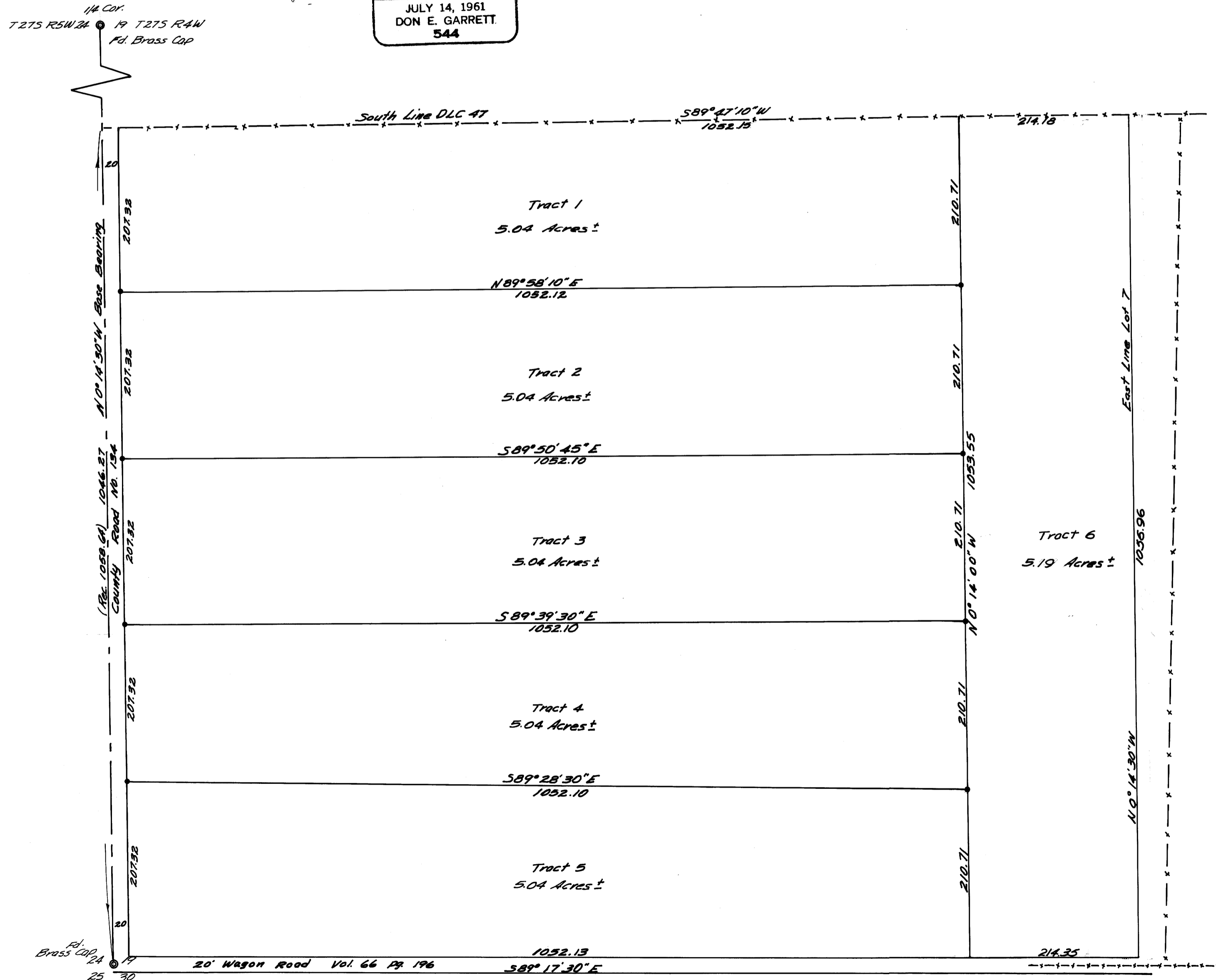
COUNTY SURVEYOR
DOUGLAS COUNTY, ORE.

REGISTERED
OREGON
LAND SURVEYOR

Don E. Garrett

JULY 14, 1961
DON E. GARRETT
544

1/4 Cor.
T27S R5W 24 1/4 T27S R4W
Pd. Brass Cap



MAP FILE M 327-79

MAP FILE M 327-79