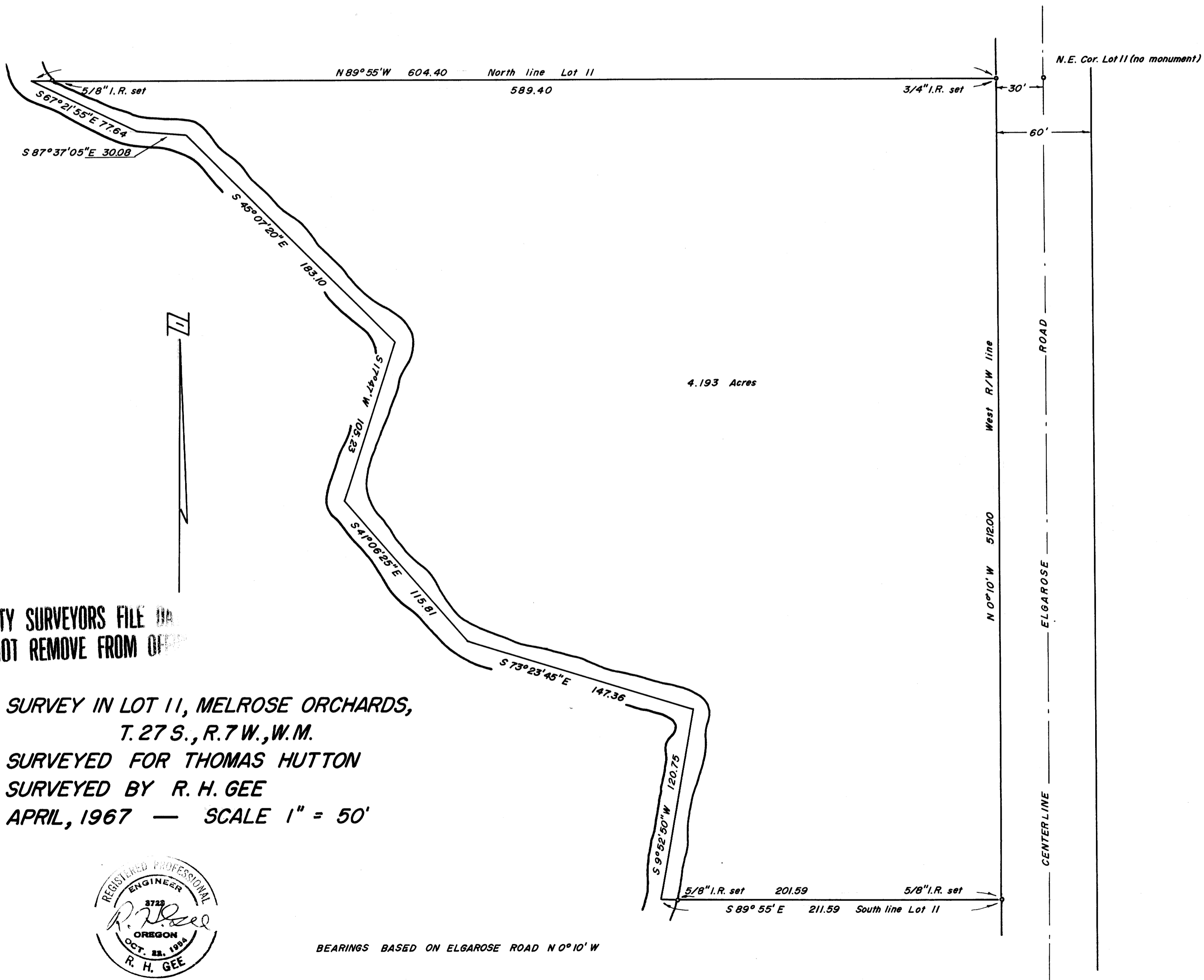


FILED
RECEIVED

APR 17 1967

COUNTY SURVEYOR
DOUGLAS COUNTY, ORE.

M32-77



COUNTY SURVEYORS FILE OR
DO NOT REMOVE FROM OFFICE

SURVEY IN LOT 11, MELROSE ORCHARDS,
T. 27 S., R. 7 W., W.M.
SURVEYED FOR THOMAS HUTTON
SURVEYED BY R. H. GEE
APRIL, 1967 — SCALE 1" = 50'



BEARINGS BASED ON ELGAROSE ROAD N 0° 10' W

M.P. FILE M32-77 P